

THIS MAP WAS PREPARED FOR ASSESSMENT PURPOSE ONLY.

NW1/4 NE1/4 SEC.34 T30S. R.5W. W.M.
DOUGLAS COUNTY
1" = 100'

REVISED ON
1-7-21

30 5 34AB
CANYONVILLE

CANCELLED NO'S
500 600 4205
6503 3200 2100
2001

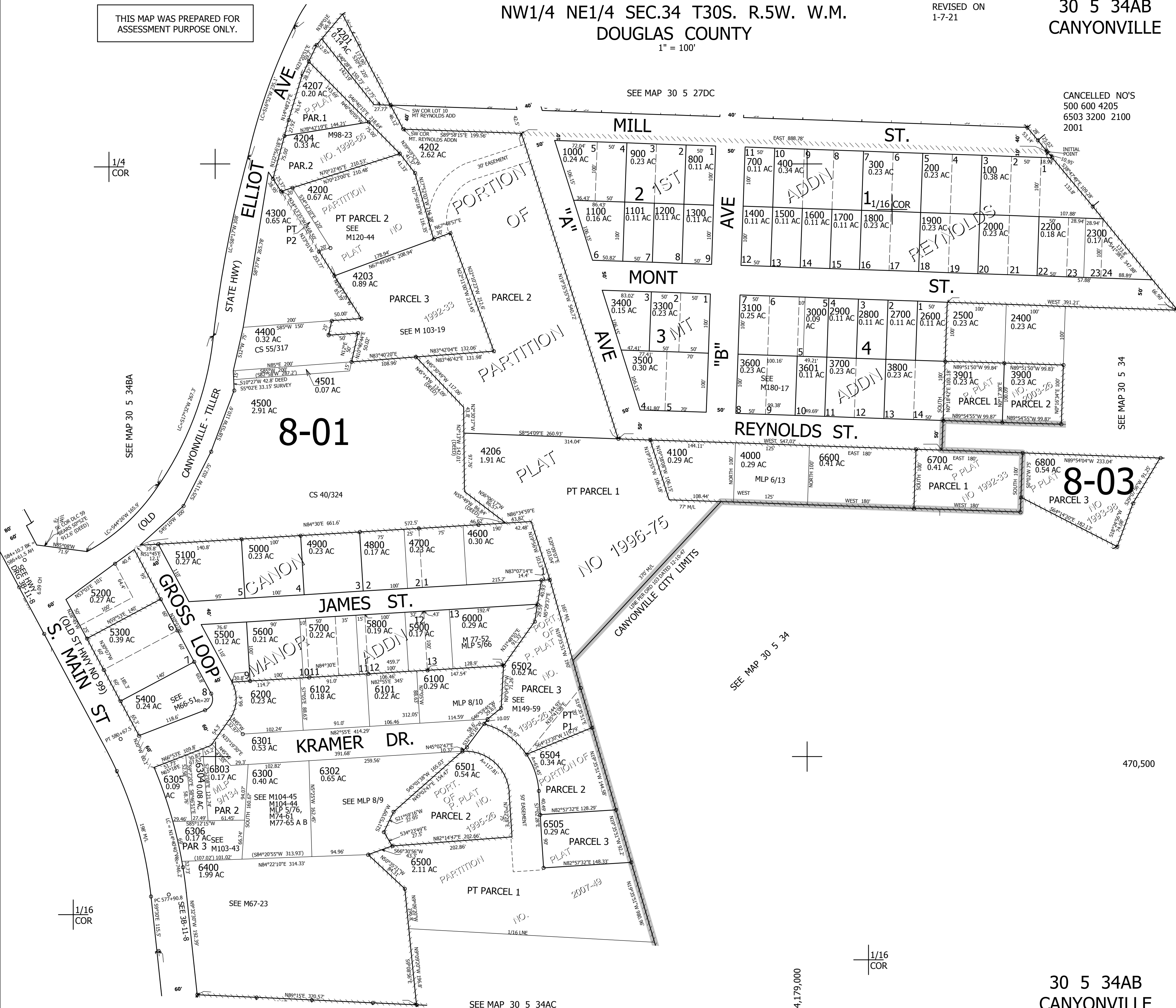
SEE MAP 30 5 27DC

SEE MAP 30 5 34

SEE MAP 30 5 34

470,500

4,179,000



SEE MAP 30 5 34AC

30 5 34AB
CANYONVILLE