

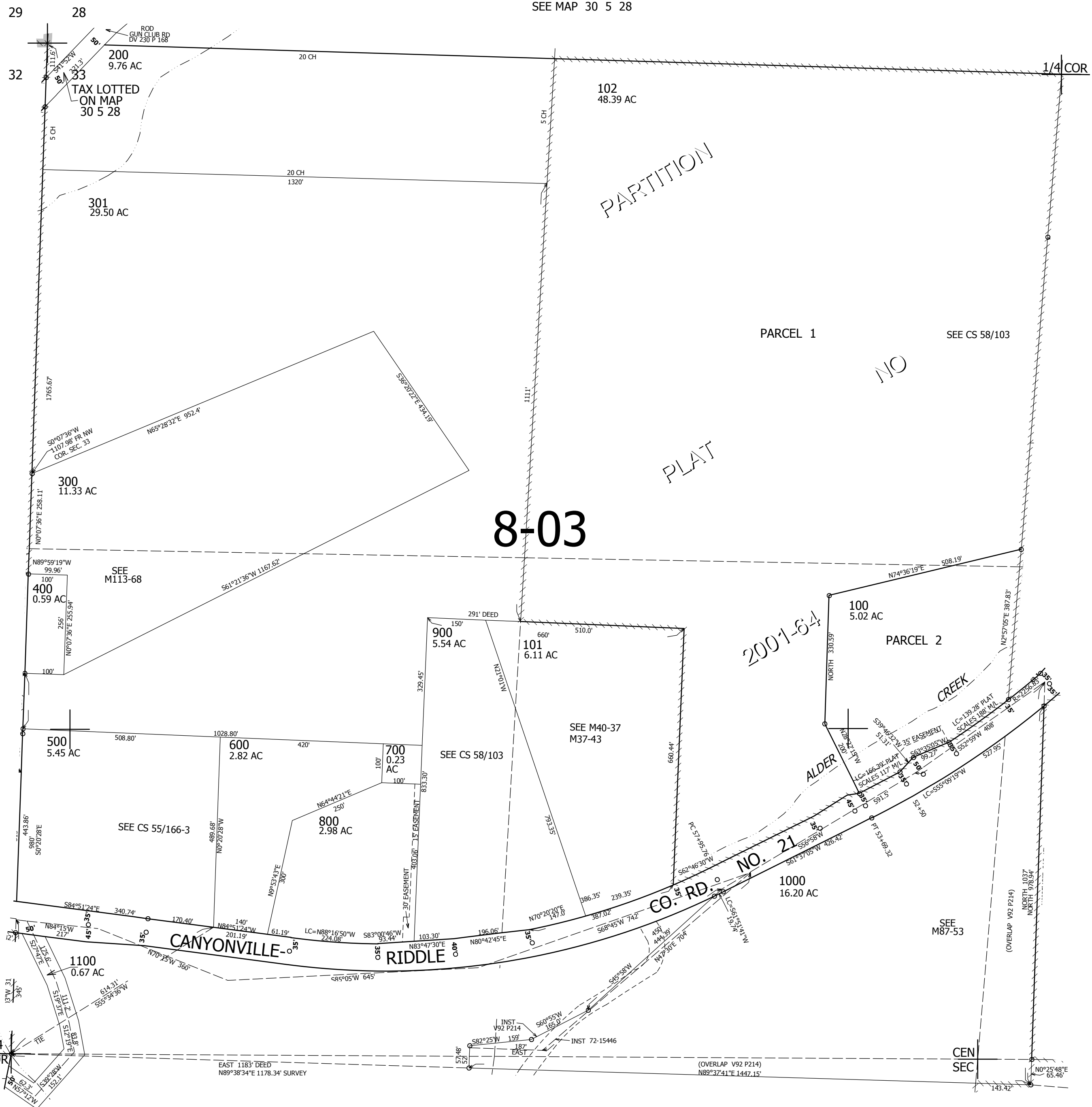
THIS MAP WAS PREPARED FOR ASSESSMENT PURPOSE ONLY.

# NW1/4 SEC.33 T30S. R.5W. W.M. DOUGLAS COUNTY

REVISED ON 6-24-19

30 5 33B

1" = 200'



CANCELLED NO'S

470,000

SEE MAP 30 5 33

4,172,000

30 5 33B