

THIS MAP WAS PREPARED FOR ASSESSMENT PURPOSE ONLY.

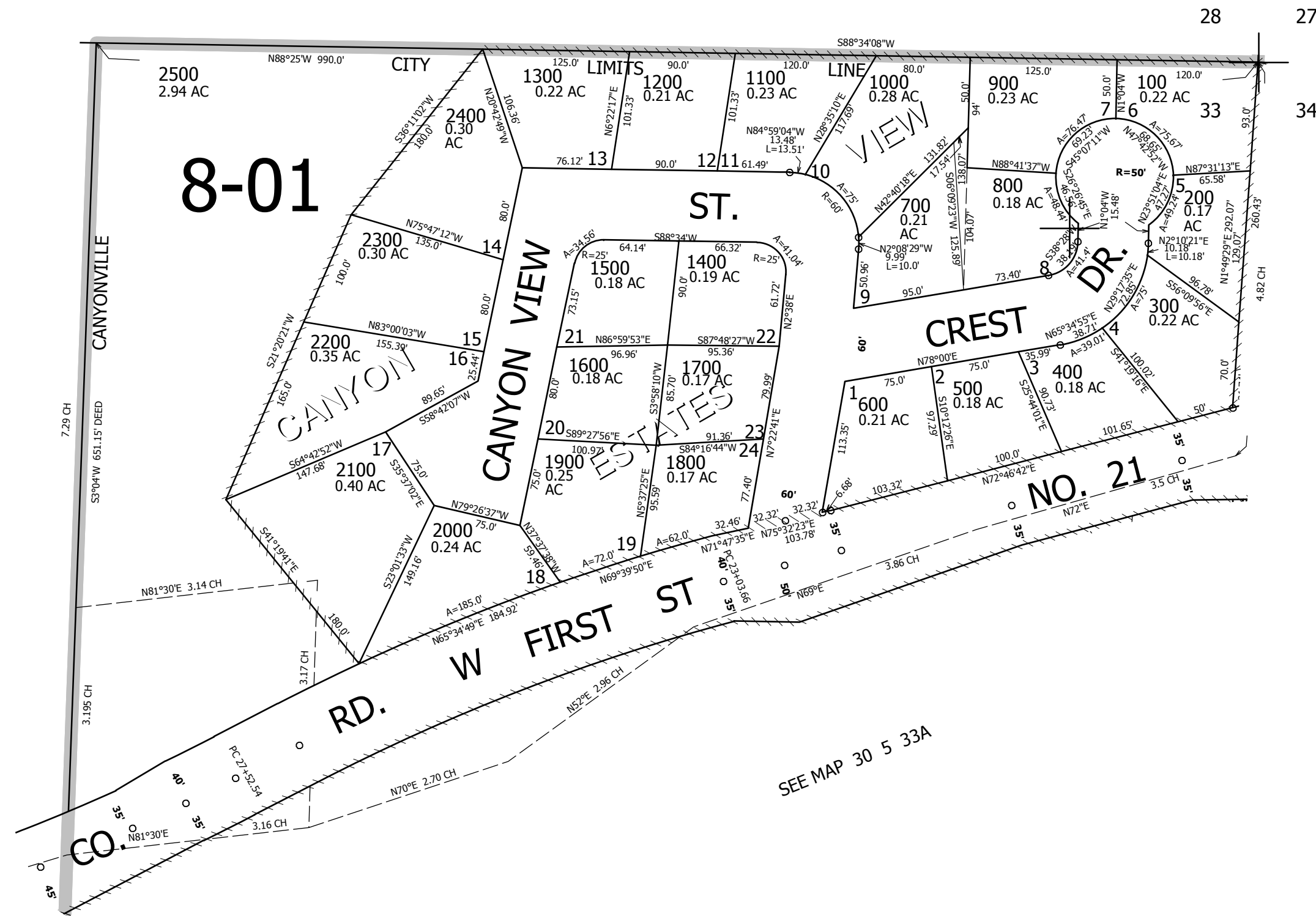
NE1/4 NE1/4 SEC.33 T30S. R.5W. W.M.  
DOUGLAS COUNTY  
1" = 100'

REVISED ON  
8-28-14

30 5 33AA  
CANYONVILLE

SEE MAP 30 5 28

1/16 COR

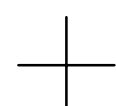
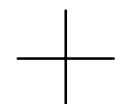


SEE MAP 30 5 33A

SEE MAP 30 5 33A

CANCELLED NO'S  
2600

SEE MAP 30 5 34BB



1/16 COR

1/16 COR

470,500

4,175,000

30 5 33AA  
CANYONVILLE