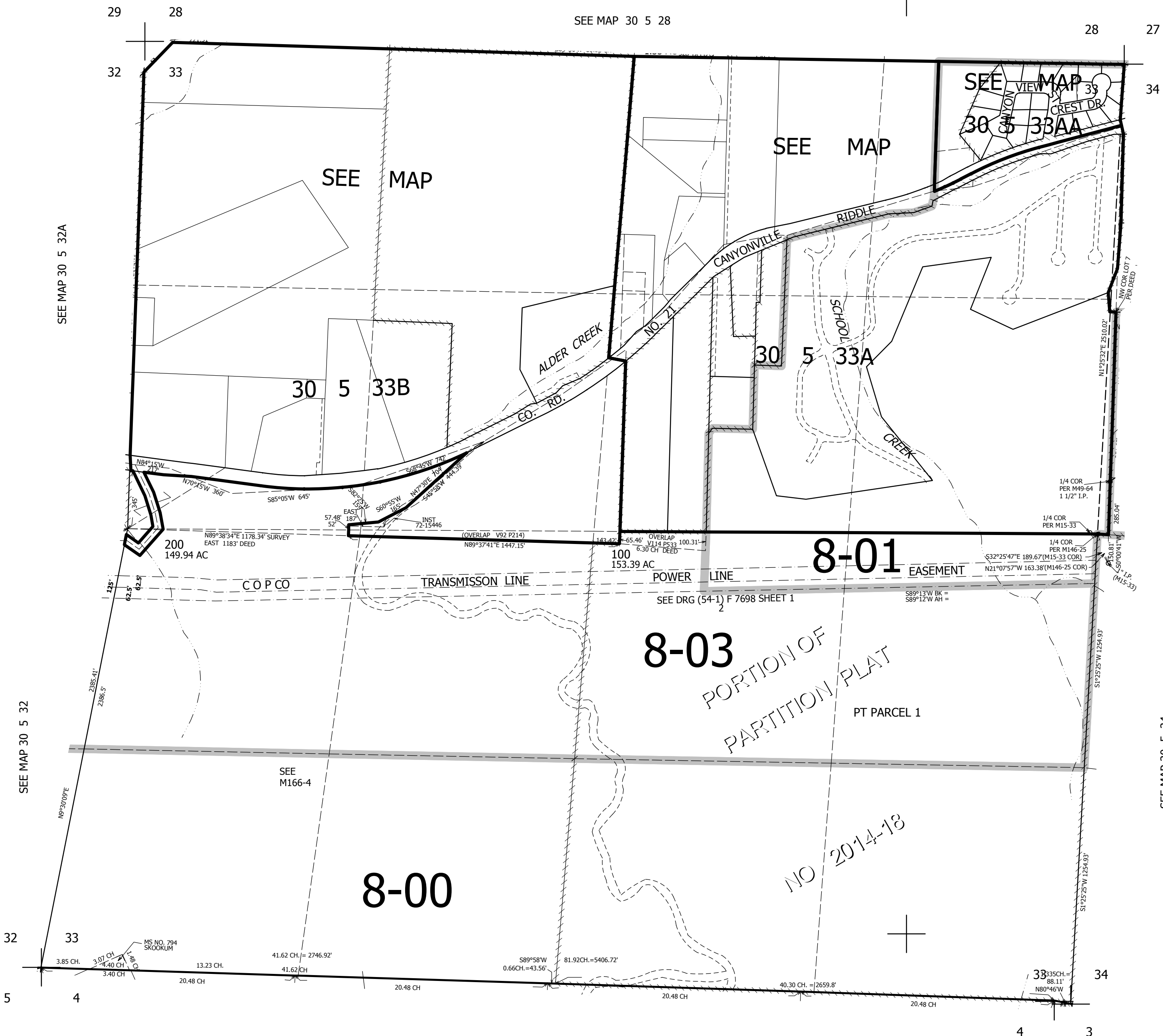
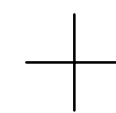
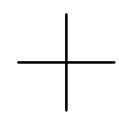
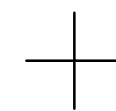
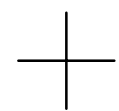


THIS MAP WAS PREPARED FOR ASSESSMENT PURPOSE ONLY.

SEC.33 T30S. R.5W. W.M.
DOUGLAS COUNTY
1" = 400'

REVISED ON
6-24-19

30 5 33
& INDEX
CANYONVILLE



SEE MAP 30 5 28

SEE MAP 30 5 32A

SEE MAP 30 5 32

SEE MAP 31 5 4

CANCELLED NO'S
100M1

SEE MAP 30 5 34BB

SEE MAP 30 5 34

467,000

4,174,000

30 5 33
& INDEX
CANYONVILLE