

THIS MAP WAS PREPARED FOR ASSESSMENT PURPOSE ONLY.

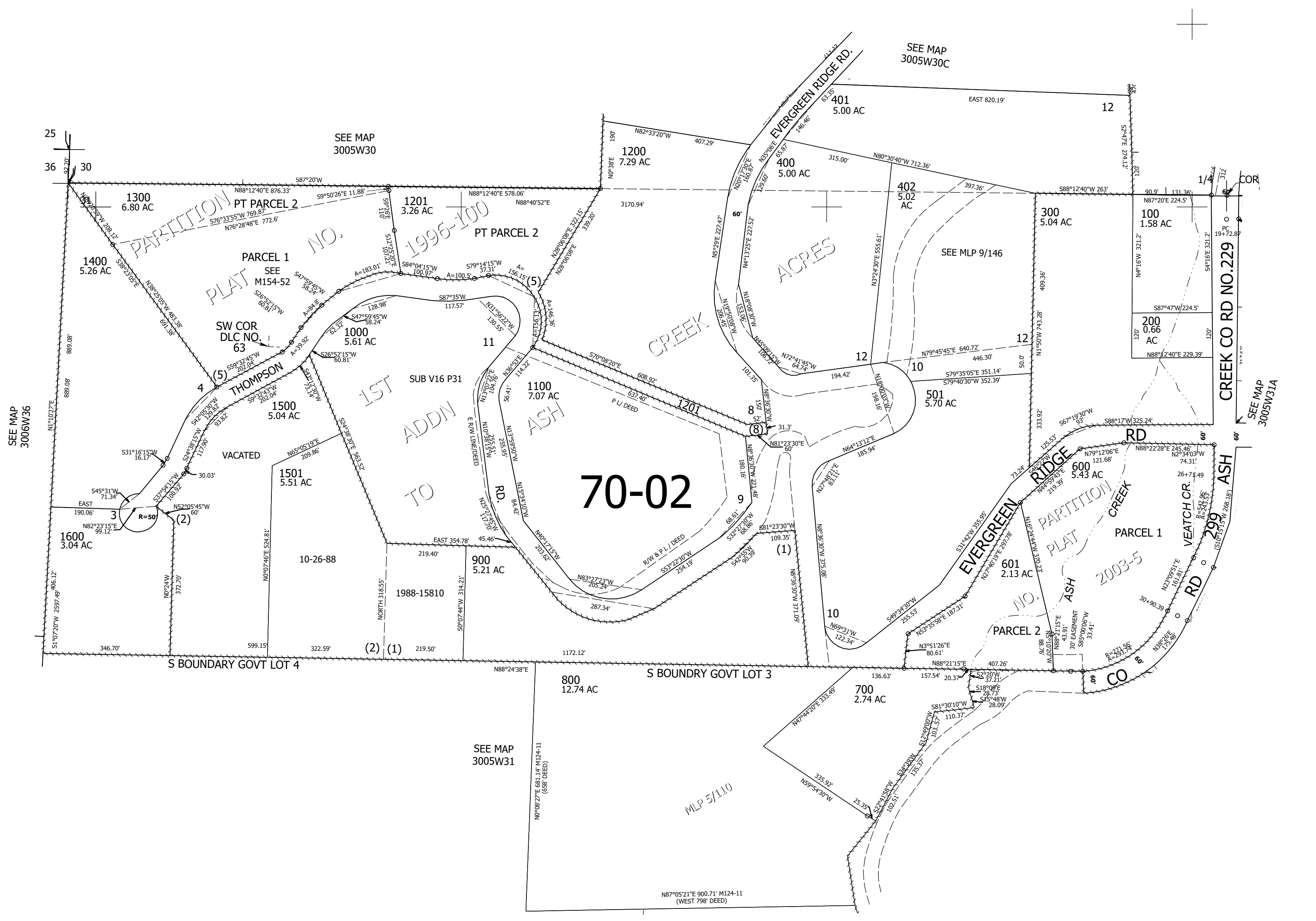
Upper Left:
123°20'54"W 42°55'44"N
4158587E 473009N ft

NW1/4 SEC.31 T.30S. R.05W. W.M.
DOUGLAS COUNTY
1" = 200'

Date Exported 2025-05-22

300531B

CANCELLED NOS:
500 901 1301 1202



SEE MAP
3006W36

SEE MAP
3005W30

SEE MAP
3005W30C

SEE MAP
3005W31A

SEE MAP
3005W31

MLP 5/110

300531B

Lower Right:
123°20'W 42°55'11"N
4162512E 469531N ft