

THIS MAP WAS PREPARED FOR ASSESSMENT PURPOSE ONLY.

Upper Left:
123°20'21"W 42°56'5"N
4161121E 474998N ft

SE1/4 SEC.30 T.30S. R.05W. W.M.
DOUGLAS COUNTY
1" = 200'

Date Exported 2024-12-11

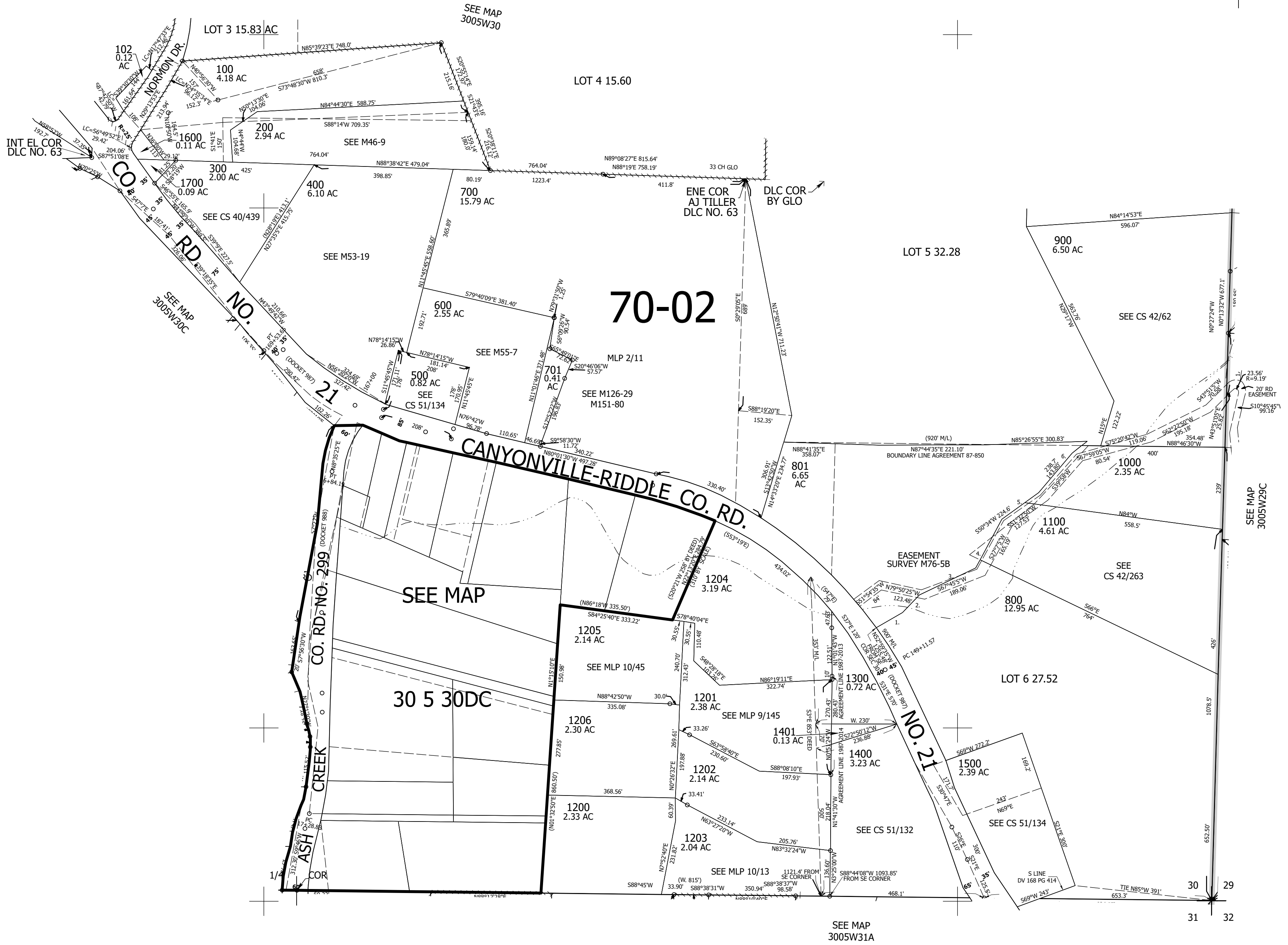
300530D
& INDEX

CANCELLED NOS:
101 103 201
1699M1 100M1 1600M1
1700M1

- PARCEL 801
1. N60°11'50"E 107.07'
 2. N42°26'E 70.13'
 3. N62°27'50"E 178.41'
 4. N27°06'30"E 162.63'
 5. N51°33'20"E 130.36'
 6. N39°59'50"E 147.78'
 7. N47°01'15"E 49.83'

CEN SEC

1/4



SEE MAP 3005W29C

SEE MAP 3005W31A

300530D
& INDEX

Lower Right:
123°19'27"W 42°55'32"N
4165046E 471521N ft