

THIS MAP WAS PREPARED FOR ASSESSMENT PURPOSE ONLY.

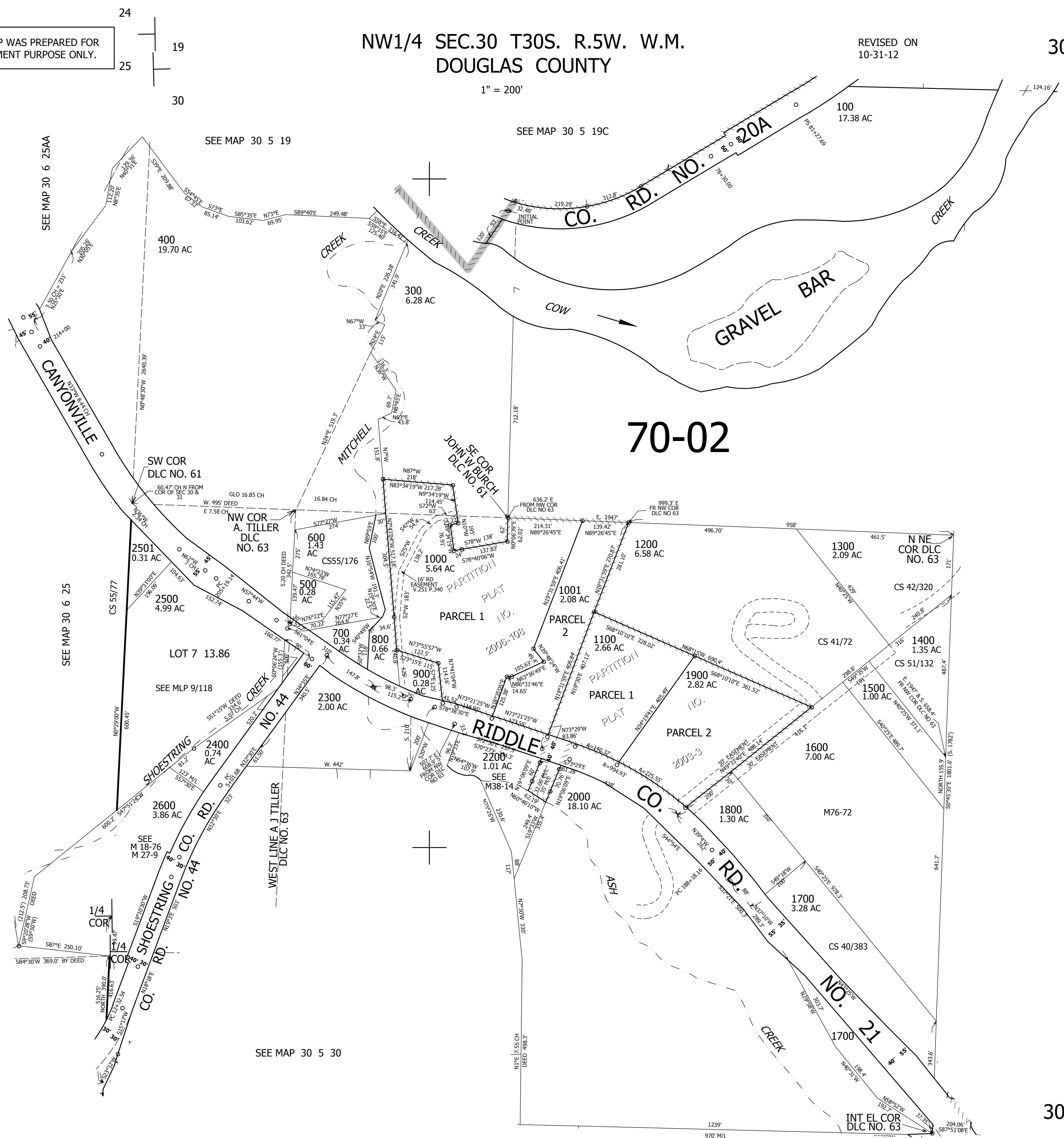
NW1/4 SEC.30 T30S. R.5W. W.M. DOUGLAS COUNTY

REVISED ON 10-31-12

30 5 30B

1" = 200'

1/4 COR.



CANCELLED NO'S
2100 1101 200

SEE MAP 30 5 30

475,000

CEN.
SEC.

4,162,000

30 5 30B

SEE MAP 30 5 30C