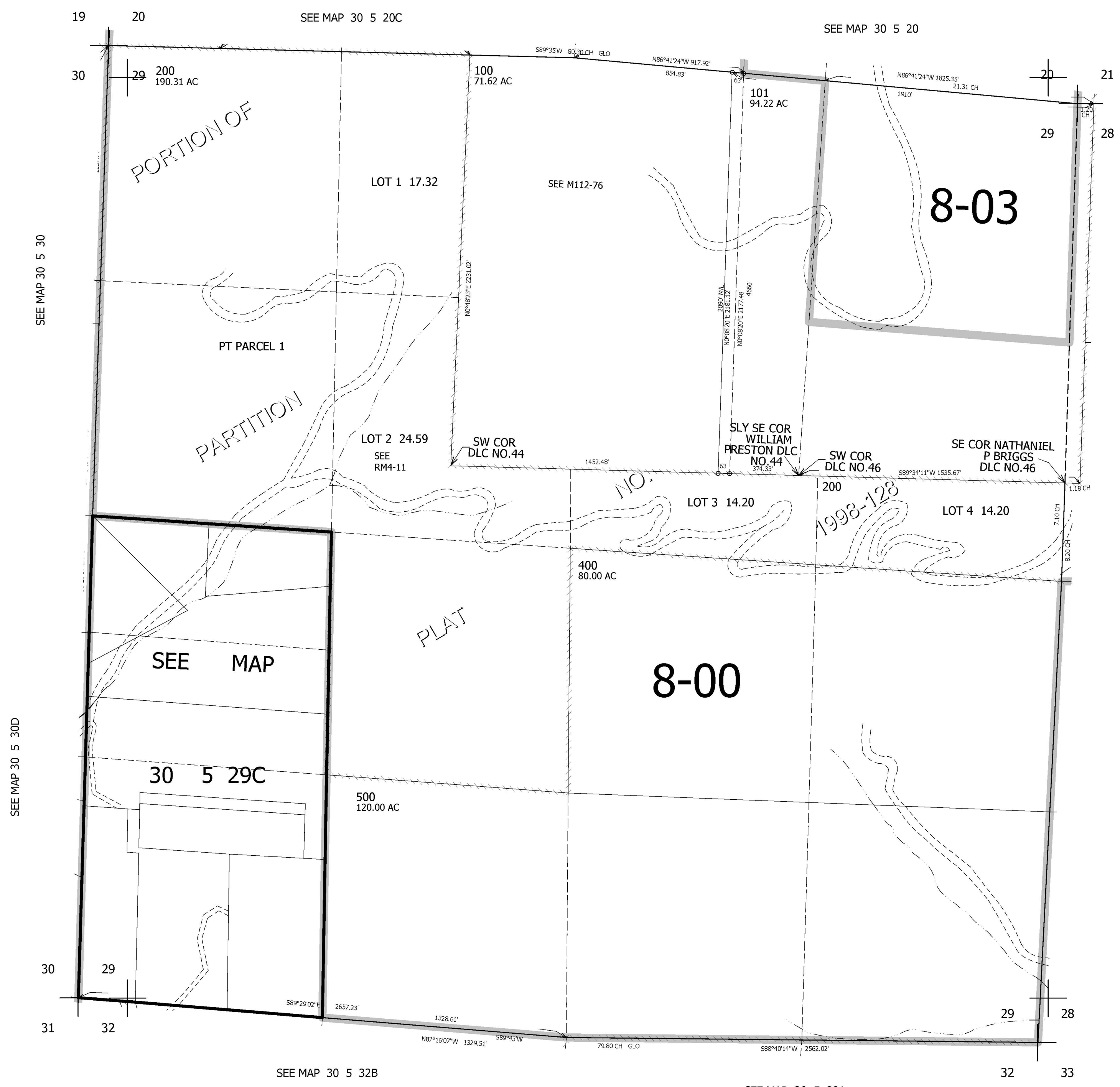


THIS MAP WAS PREPARED FOR ASSESSMENT PURPOSE ONLY.

SEC.29 T30S. R.5W. W.M.
DOUGLAS COUNTY
1" = 400'

REVISED ON
9-3-08

30 5 29
& INDEX



CANCELLED NO'S

SEE MAP 30 5 28

SEE MAP 30 5 30

SEE MAP 30 5 30D

SEE MAP 30 5 32B

SEE MAP 30 5 32A

472,000

4,170,000

30 5 29
& INDEX