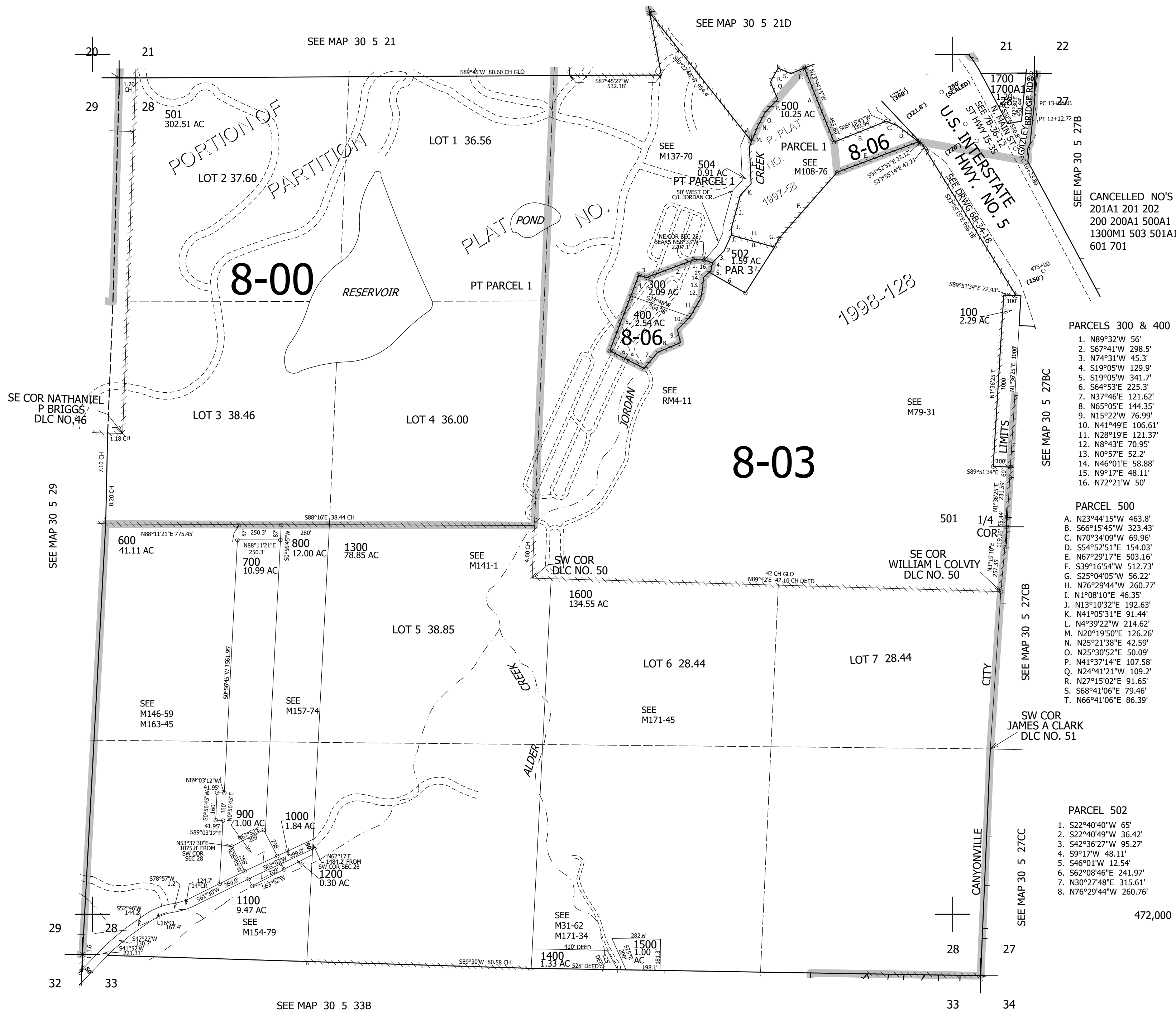


THIS MAP WAS PREPARED FOR ASSESSMENT PURPOSE ONLY.

SEC.28 T30S. R.5W. W.M. DOUGLAS COUNTY 1" = 400'

REVISED ON 11-6-19

30 5 28



CANCELLED NO'S
 201A1 201 202
 200 200A1 500A1
 1300M1 503 501A1
 601 701

- PARCELS 300 & 400
1. N89°32'W 56'
 2. S67°41'W 298.5'
 3. N74°31'W 45.3'
 4. S19°05'W 129.9'
 5. S19°05'W 341.7'
 6. S64°53'E 225.3'
 7. N37°46'E 121.62'
 8. N65°05'E 144.35'
 9. N15°22'W 76.99'
 10. N41°49'E 106.61'
 11. N28°19'E 121.37'
 12. N8°43'E 70.95'
 13. N0°57'E 52.2'
 14. N46°01'E 58.88'
 15. N9°17'E 48.11'
 16. N72°21'W 50'

- PARCEL 500
- A. N23°44'15"W 463.8'
 - B. S66°15'45"W 323.43'
 - C. N70°34'09"W 69.96'
 - D. S54°52'51"E 154.03'
 - E. N67°29'17"E 503.16'
 - F. S39°16'54"W 512.73'
 - G. S25°04'05"W 56.22'
 - H. N76°29'44"W 260.77'
 - I. N1°08'10"E 46.35'
 - J. N13°10'32"E 192.63'
 - K. N41°05'31"E 91.44'
 - L. N4°39'22"W 214.62'
 - M. N20°19'50"E 126.26'
 - N. N25°21'38"E 42.59'
 - O. N25°30'52"E 50.09'
 - P. N41°37'14"E 107.58'
 - Q. N24°41'21"W 109.2'
 - R. N27°15'02"E 91.65'
 - S. S68°41'06"E 79.46'
 - T. N66°41'06"E 86.39'

- PARCEL 502
1. S22°40'40"W 65'
 2. S22°40'49"W 36.42'
 3. S42°36'27"W 95.27'
 4. S9°17'W 48.11'
 5. S46°01'W 12.54'
 6. S62°08'46"E 241.97'
 7. N30°27'48"E 315.61'
 8. N76°29'44"W 260.76'

472,000

30 5 28