

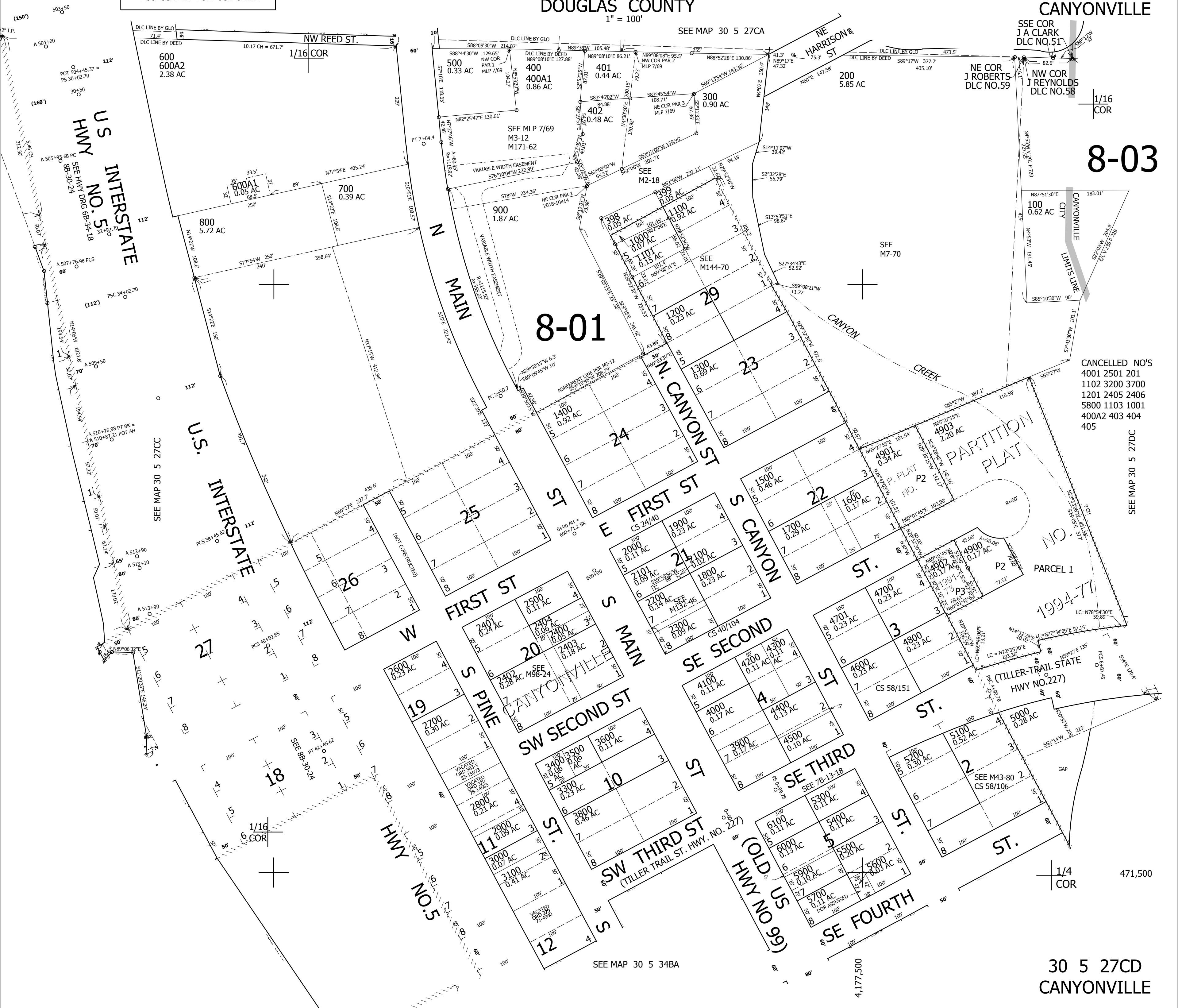
THIS MAP WAS PREPARED FOR ASSESSMENT PURPOSE ONLY.

SE1/4 SW1/4 SEC.27 T30S. R.5W. W.M. DOUGLAS COUNTY

1" = 100'

REVISED ON 8-20-19

30 5 27CD CANYONVILLE



8-03

8-01

CANCELLED NO'S
 4001 2501 201
 1102 3200 3700
 1201 2405 2406
 5800 1103 1001
 400A2 403 404
 405

SEE MAP 30 5 27DC

1/4 COR

471,500

30 5 27CD CANYONVILLE

SEE MAP 30 5 34BA

4,177,500