

THIS MAP WAS PREPARED FOR ASSESSMENT PURPOSE ONLY.

NW1/4 SW1/4 SEC.27 T30S. R.5W. W.M. DOUGLAS COUNTY

REVISED ON 11-19-15

30 5 27CB CANYONVILLE

1" = 100'

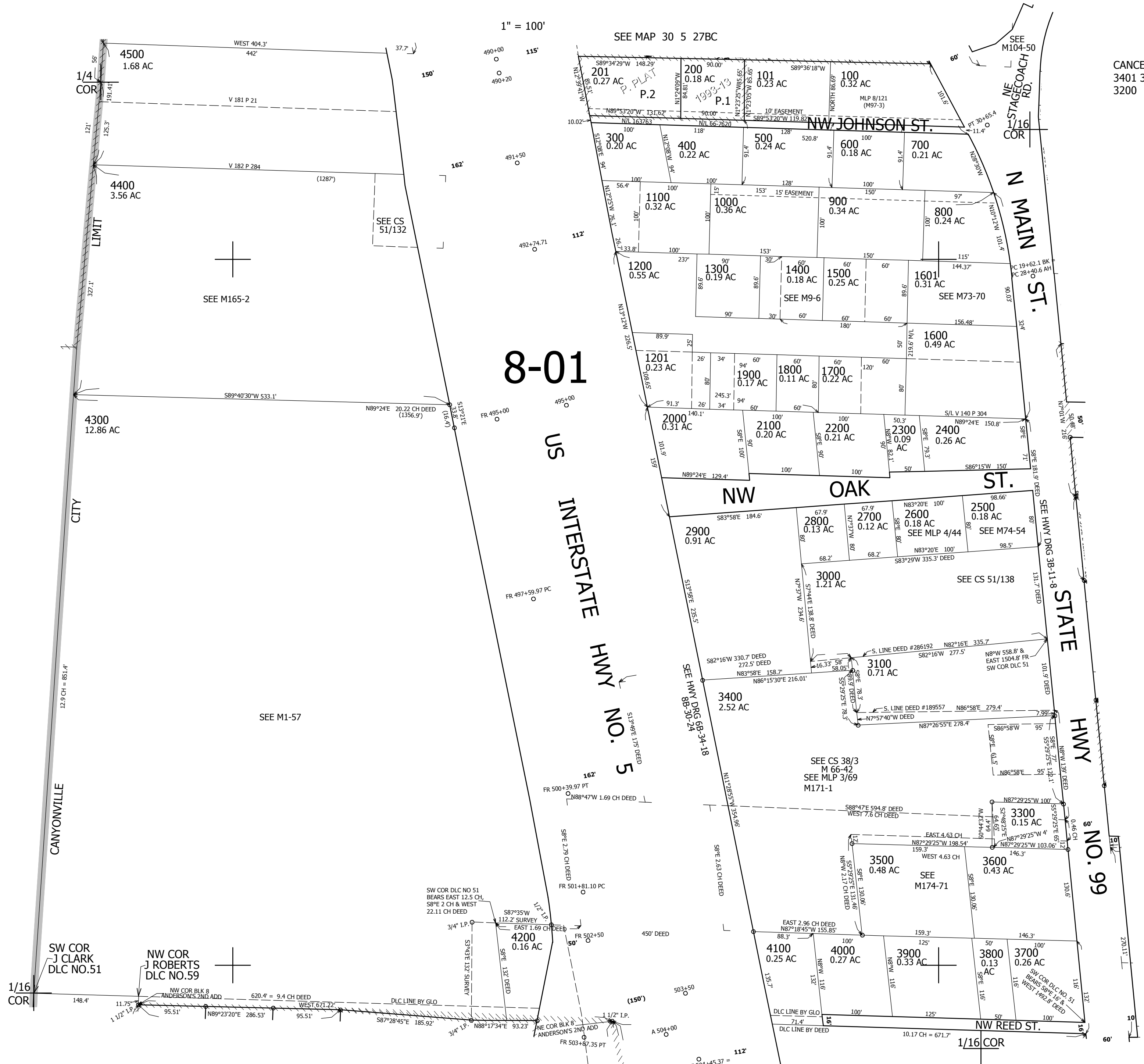
SEE MAP 30 5 27BC

SEE M104-50

CANCELLED NO'S 3401 3402 3403 3200

SEE MAP 30 5 28

SEE MAP 30 5 27CA



SEE M165-2

SEE CS 51/132

8-01

US INTERSTATE HWY NO. 5

SEE M1-57

SEE CS 38/3 M 66-42 SEE MLP 3/69 M171-1

SW COR J CLARK DLC NO.51

NW COR J ROBERTS DLC NO.59

SEE MAP 30 5 27CC

SEE MAP 30 5 27CD

473,000

4,176,500

30 5 27CB CANYONVILLE