

THIS MAP WAS PREPARED FOR ASSESSMENT PURPOSE ONLY.

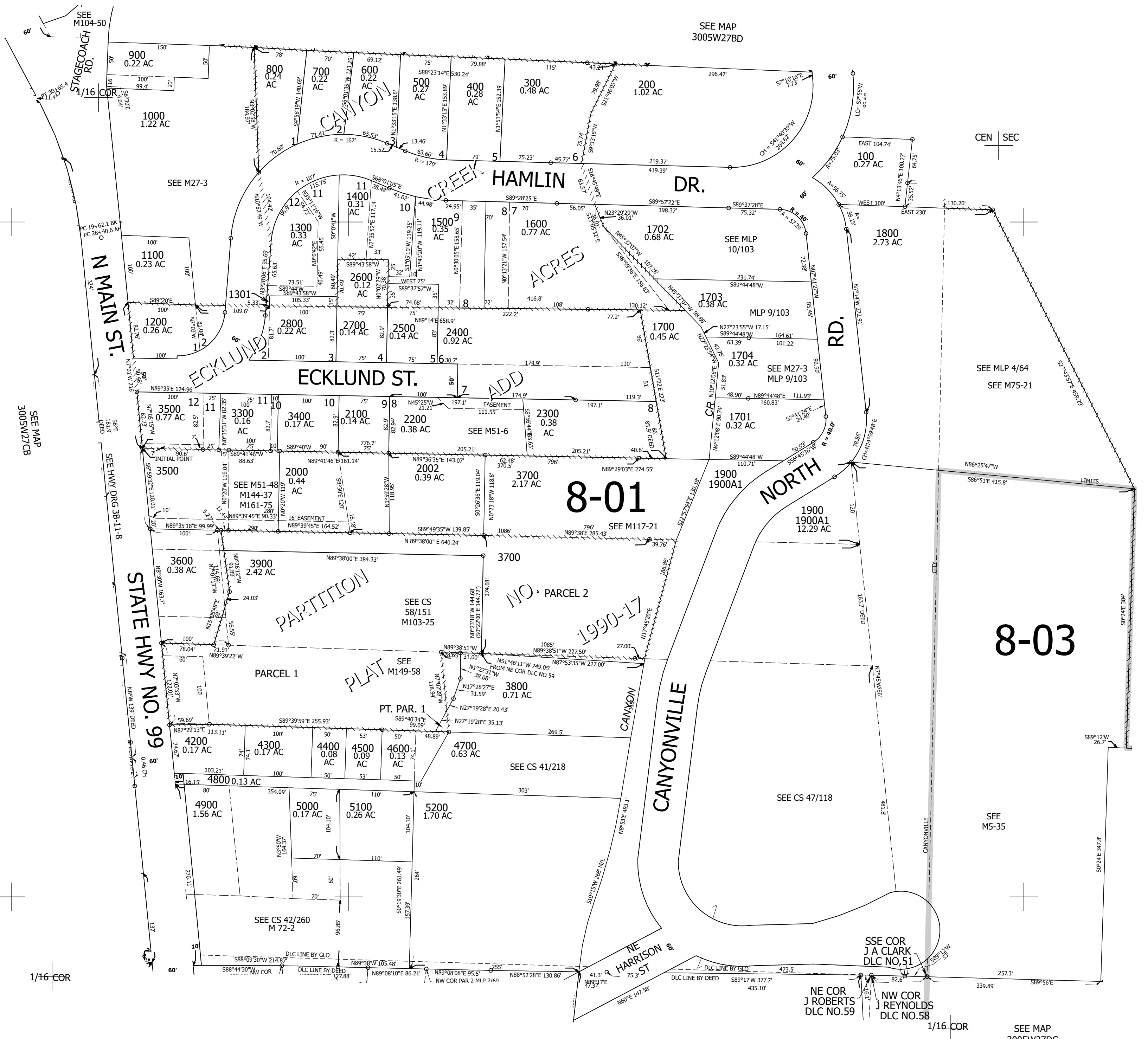
Upper Left:  
123°16'56"W 42°56'4"N  
4176343E 474406N ft

NE1/4 SW1/4 SEC.27 T.30S. R.05W. W.M.  
DOUGLAS COUNTY  
1" = 100'

Date Exported 2025-09-24

300527CA  
Canyonville

CANCELLED NOS:  
4000 3901 4100  
3702 3701 3601  
2900 2001 3801  
3802 3902 3000  
3100 3200 2003  
3501 2004



8-01

8-03

SEE  
MAP 3005W27CD

SEE MAP  
3005W27CD

300527CA  
Canyonville

Lower Right:  
123°16'29"W 42°55'48"N  
4178320E 472686N ft