

THIS MAP WAS PREPARED FOR ASSESSMENT PURPOSE ONLY.

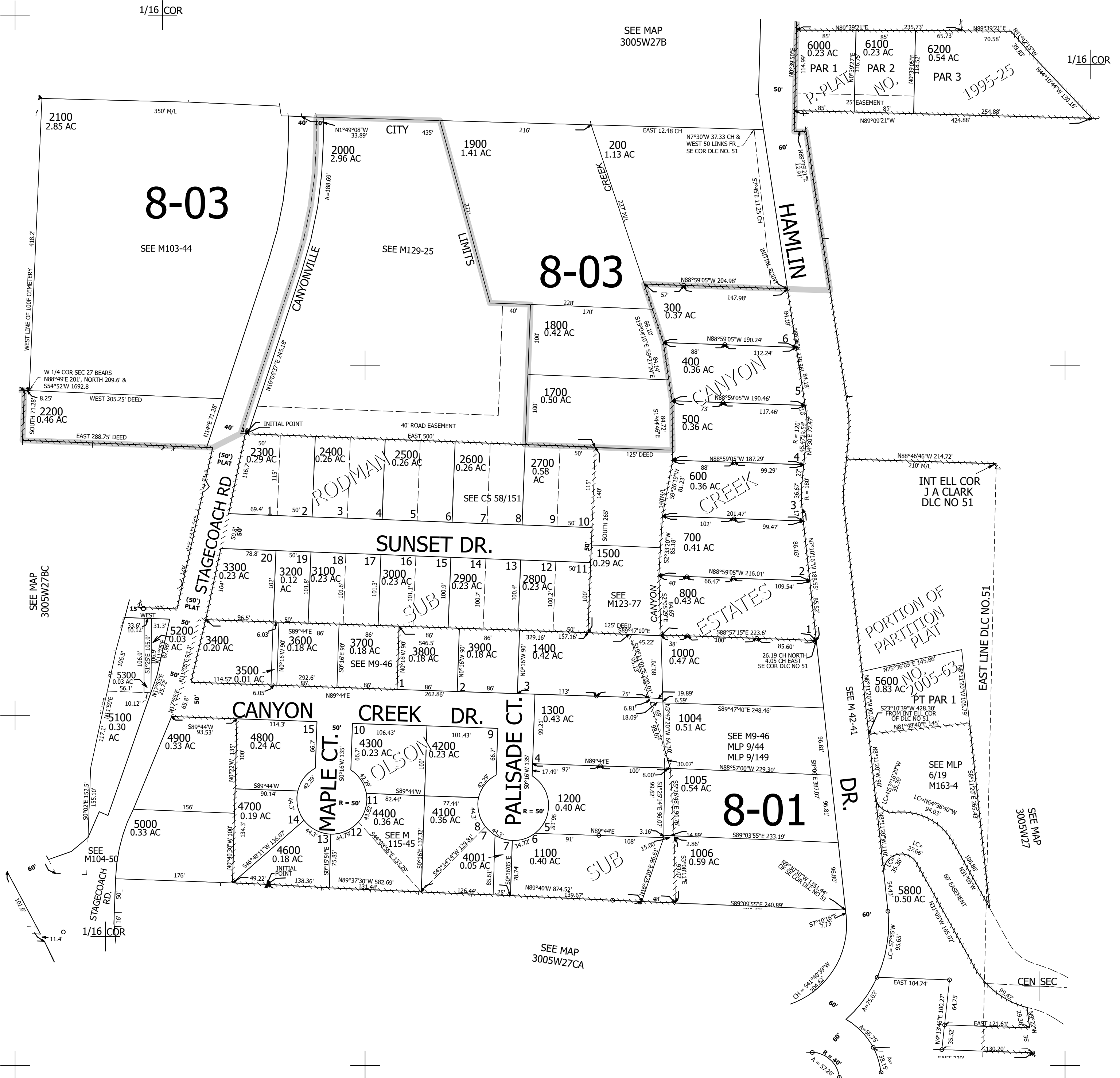
Upper Left:
123°16'57"W 42°56'16"N
4176303E 475607N ft

SE1/4 NW1/4 SEC.27 T.30S. R.05W. W.M.
DOUGLAS COUNTY
1" = 100'

Date Exported 2023-12-13

300527BD
Canyonville

CANCELLED NOS:
100 1002 1600
1001 900 1003
1101 1301 1201
1202 4000 2001
5500 5700 5900
5400 4500



SEE MAP
3005W27BC

SEE MAP
3005W27B

SEE M 42-41

SEE MAP
3005W27

SEE MAP
3005W27CA

300527BD
Canyonville

Lower Right:
123°16'30"W 42°55'59"N
4178266E 473869N ft