

THIS MAP WAS PREPARED FOR ASSESSMENT PURPOSE ONLY.

Upper Left:
123°17'16"W 42°56'33"N
4175007E 477346N ft

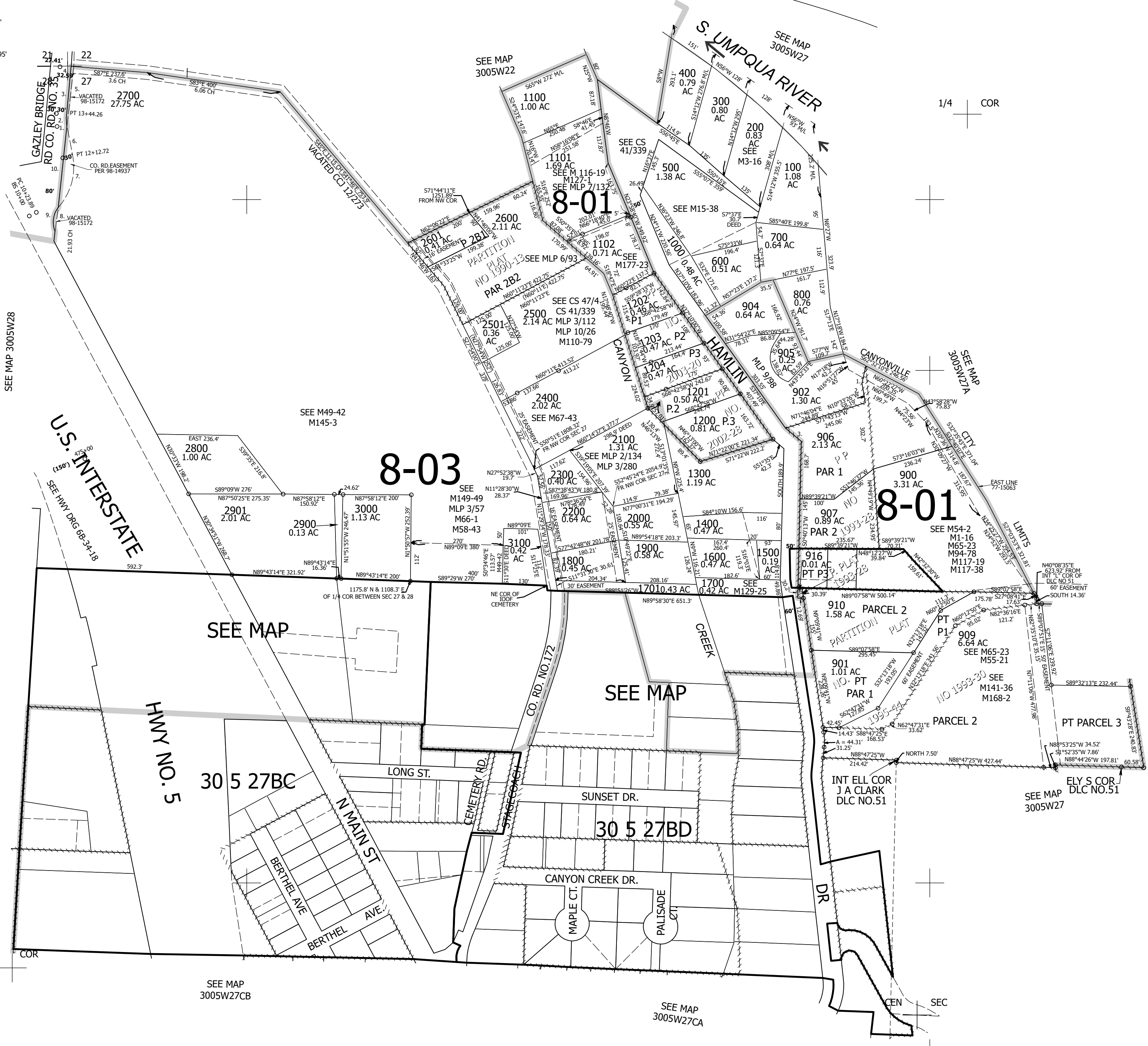
NW1/4 SEC.27 T.30S. R.05W. W.M.
DOUGLAS COUNTY
1" = 200'

Date Exported 2024-06-25

300527B
& INDEX
Canyonville

CANCELLED NOS:
903 2201 913
911 912 908
914 915 1103
917 1104

- PARCEL 906
1. S12°31'25"W 52.31'
 2. S10°40'E 58.22'
 3. S50°29'52"E 60.28'
- PARCEL 2700
1. N10°13'31"W 4.63'
 2. LC=N°50'33"W 30.71'
R=120' A=30.79'
 3. N4°23'05"E 134.2'
 4. LC=N3°22'48"E 167.53'
R=5759.58' A=167.54'
 5. S5°53'34"W 175.83'
 6. S10°13'31"E 88.68'
 7. LC=S15°05'41"W 153.95'
R=150' A=161.66'
 8. S5°53'31"W 74.19'
 9. LC=N5°53'31"E 74.19'
R=70' A=78.19'
 10. N5°53'34"E 237.17'



1/4 COR

SEE MAP
3005W27CB

SEE MAP
3005W27CA

300527B
& INDEX
Canyonville

Lower Right:
123°16'21"W 42°56'N
4178932E 473869N ft