

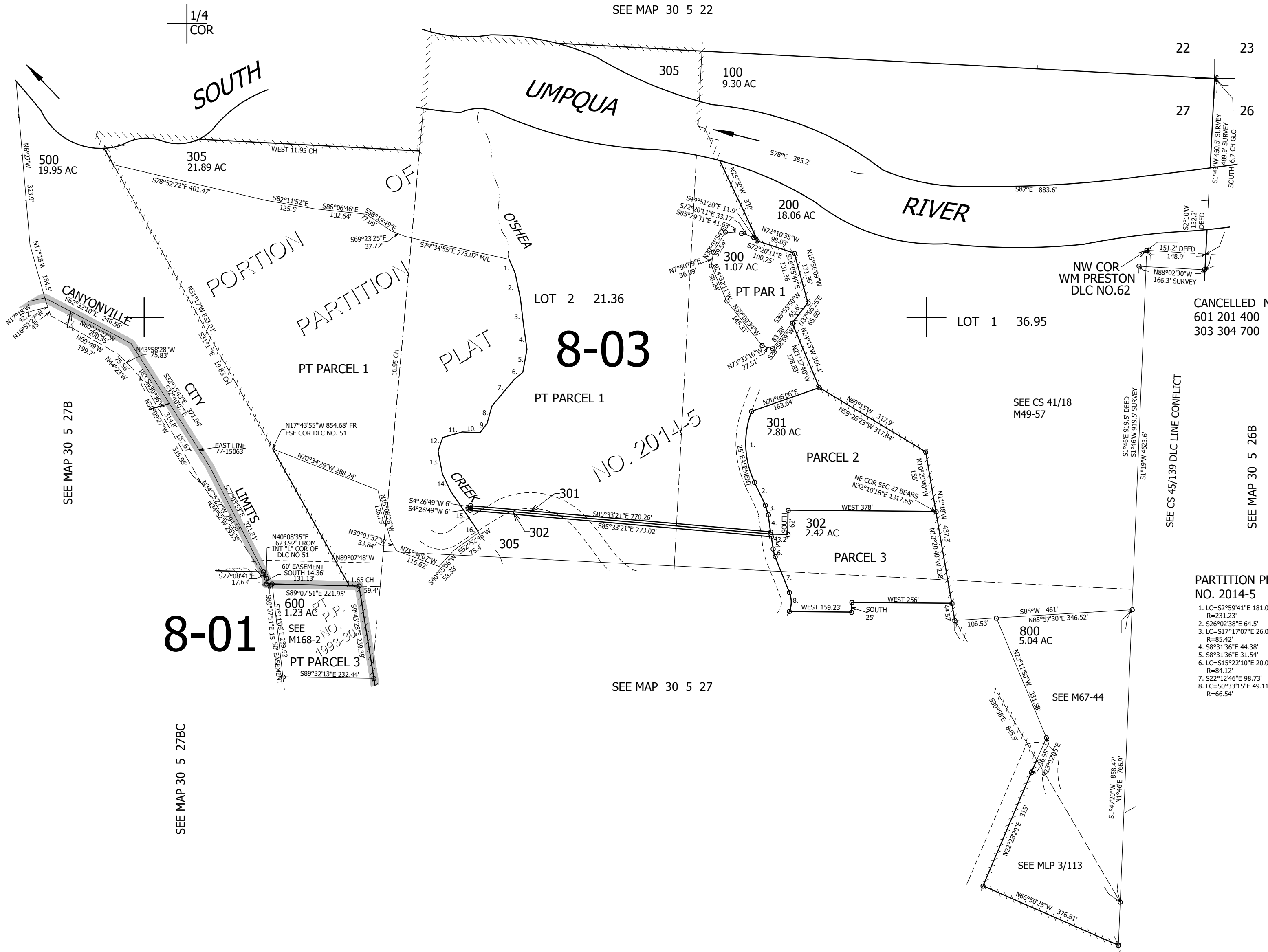
THIS MAP WAS PREPARED FOR ASSESSMENT PURPOSE ONLY.

NE1/4 SEC.27 T30S. R.5W. W.M. DOUGLAS COUNTY  
1" = 200'

REVISED ON 6-15-16

30 5 27A CANYONVILLE

SEE MAP 30 5 22



- PARCEL 500**
1. S25°14'03"E 39.21'
  2. S13°34'07"E 65.95'
  3. S8°35'17"E 63.64'
  4. S10°15'55"E 66.99'
  5. S8°15'30"W 59.45'
  6. S47°29'29"W 29.95'
  7. S38°10'26"W 87.21'
  8. S13°17'16"W 45.95'
  9. S34°58'16"W 30.29'
  10. N89°41'06"W 45.45'
  11. S72°47'34"W 51.49'
  12. S17°17'14"W 36.98'
  13. S12°27'03"E 60.34'
  14. S27°48'36"E 49.17'
  15. S36°38'54"E 108.14'
  16. S32°17'44"E 19.54'

CANCELLED NO'S  
601 201 400  
303 304 700

- PARTITION PLAT NO. 2014-5**
1. LC=S2°59'41"E 181.06'  
R=231.23'
  2. S26°02'38"E 64.5'  
R=85.42'
  3. LC=S17°17'07"E 26.02'  
R=85.42'
  4. S8°31'36"E 44.38'
  5. S8°31'36"E 31.54'  
R=84.12'
  6. LC=S15°22'10"E 20.05'  
R=84.12'
  7. S22°12'46"E 98.73'  
R=66.54'
  8. LC=S0°33'15"E 49.11'  
R=66.54'

CEN SEC

1/4 COR 474,000

4,180,000  
30 5 27A CANYONVILLE