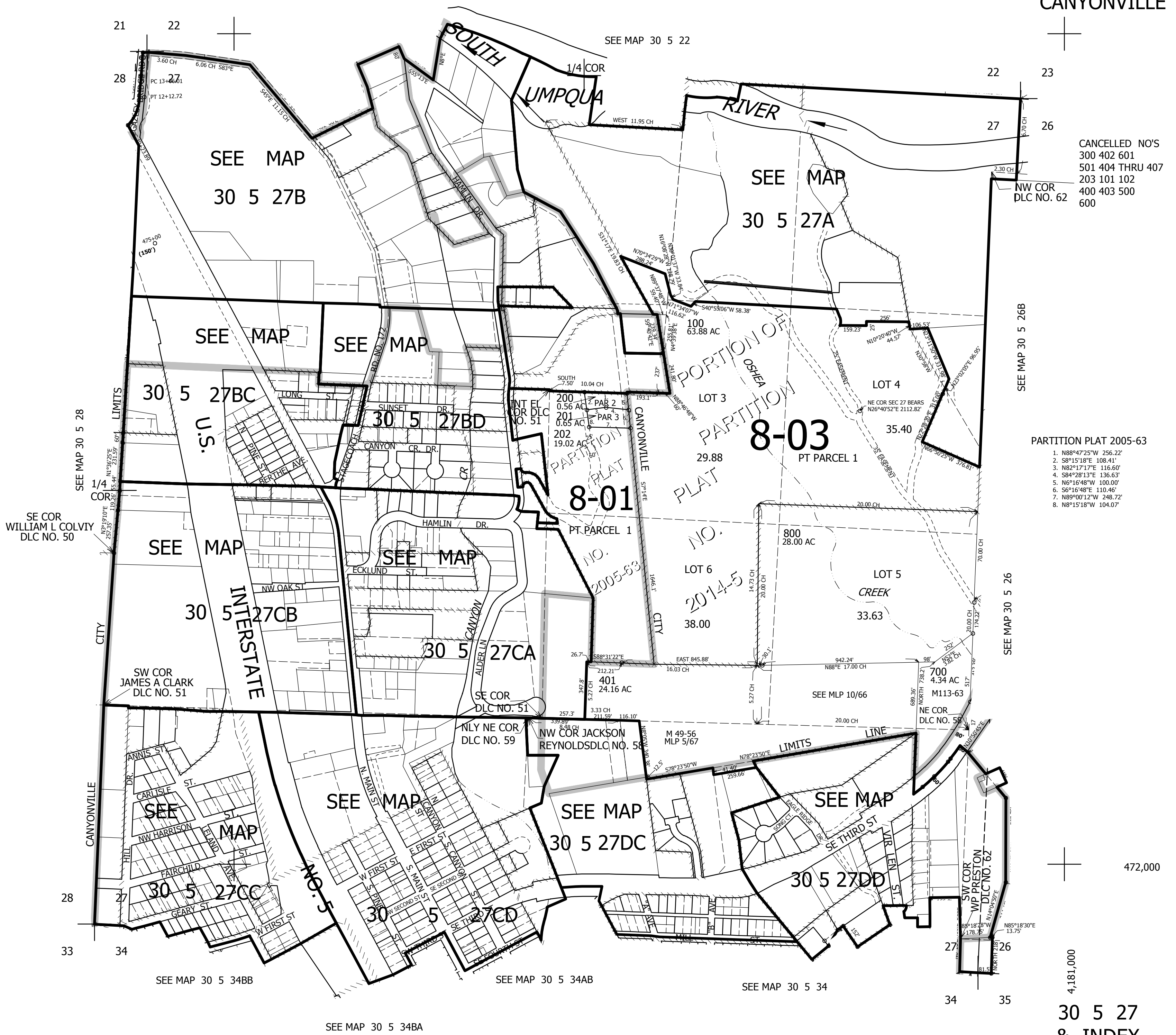


THIS MAP WAS PREPARED FOR ASSESSMENT PURPOSE ONLY.

SEC.27 T30S. R.5W. W.M.
DOUGLAS COUNTY
1" = 400'

REVISED ON
1-30-17

30 5 27
& INDEX
CANYONVILLE



CANCELLED NO'S
300 402 601
501 404 THRU 407
203 101 102
400 403 500
600

PARTITION PLAT 2005-63
1. N88°47'25"W 256.22'
2. S8°15'18"E 108.41'
3. N82°17'17"E 116.60'
4. S84°28'13"E 136.63'
5. N6°16'48"W 100.00'
6. S6°16'48"W 110.46'
7. N89°00'12"W 248.72'
8. N8°15'18"W 104.07'

472,000

4,181,000

30 5 27
& INDEX
CANYONVILLE