

THIS MAP WAS PREPARED FOR ASSESSMENT PURPOSE ONLY.

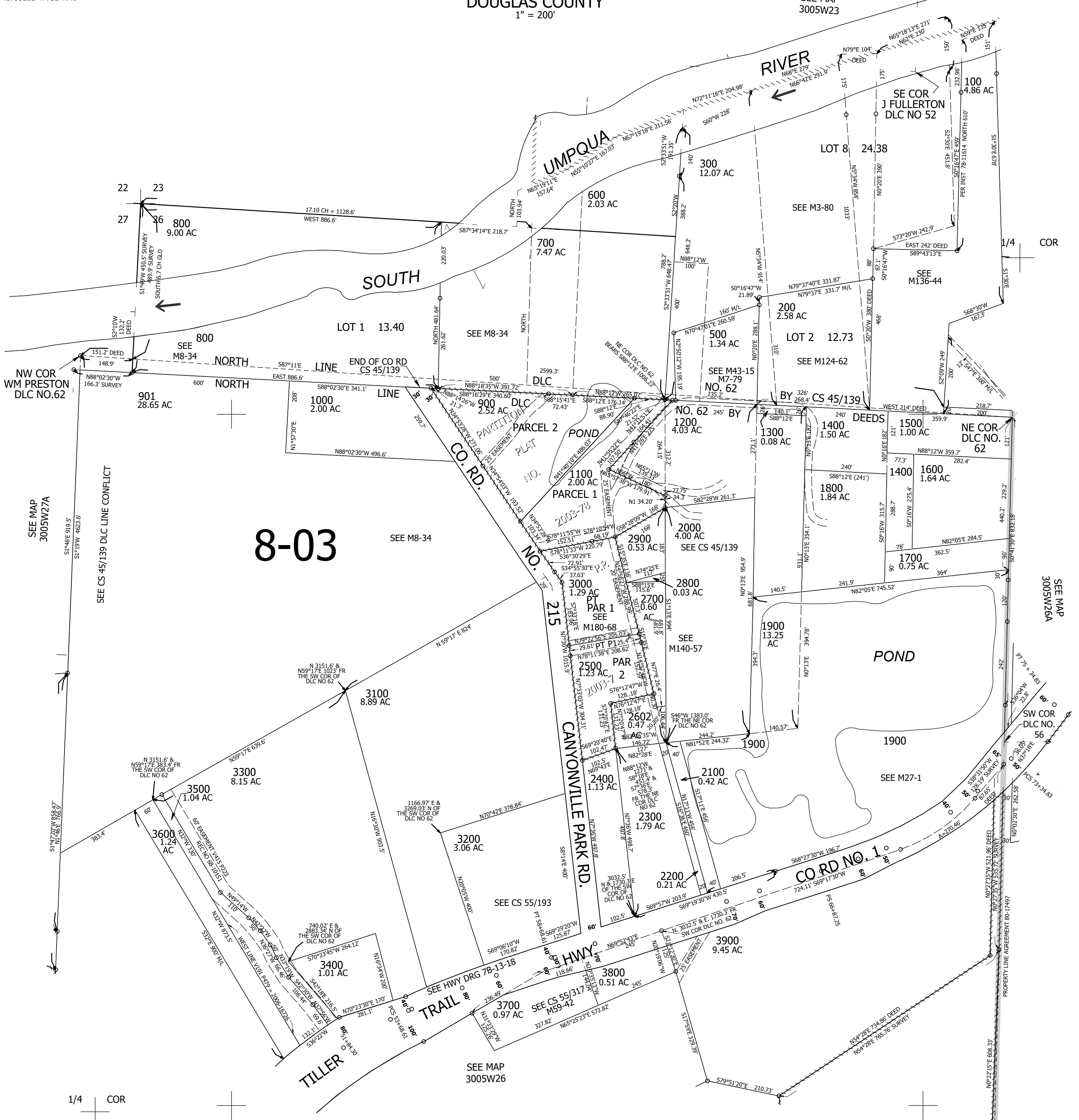
Upper Left:
123°16'10"W 42°56'34"N
4179921E 477324N ft

NW1/4 SEC.26 T.30S. R.05W. W.M.
DOUGLAS COUNTY
1" = 200'

Date Exported 2025-08-28

300526B

CANCELLED NOS:
2601 3200A1 902
2603 2501 2600
1101 903 1102
3001 3002 400



8-03

1/4 COR

CEN SEC

300526B

Lower Right:
123°15'15"W 42°56'N
4183847E 473724N ft