

THIS MAP WAS PREPARED FOR ASSESSMENT PURPOSE ONLY.

Upper Left:
123°16'19"W 42°56'37"N
4179202E 477680N ft

SEC.26 T.30S. R.05W. W.M.
DOUGLAS COUNTY

1" = 400'

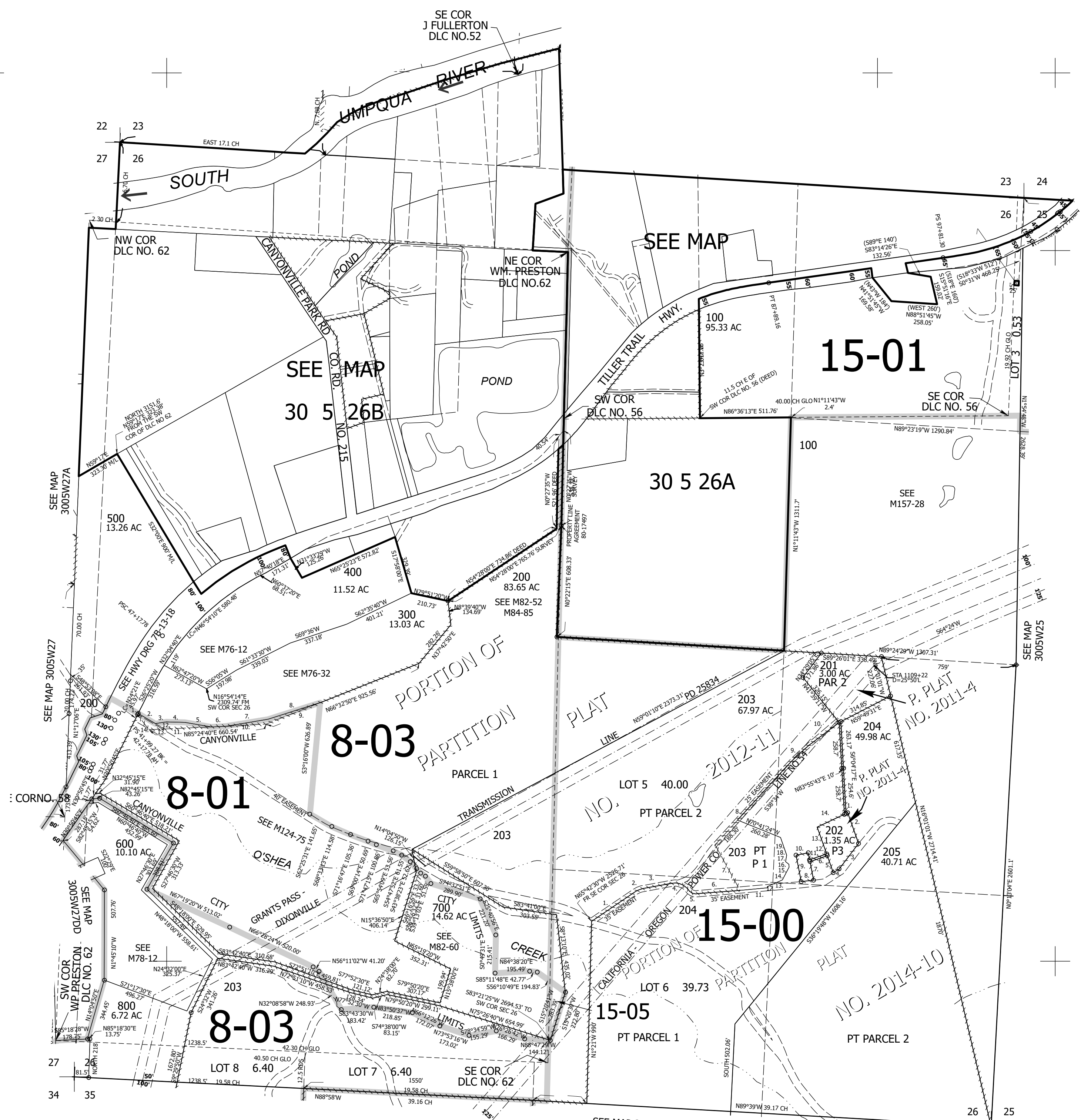
Date Exported 2024-12-26

CANCELLED NOS:
301 501 206

- PARCEL 202
1. N61°40'34"E 10'
 2. S22°17'16"E 184'
 3. S34°28'30"W 180.11'
 4. S54°32'04"W 38.83'
 5. N22°19'30"W 101.74'
 6. S68°14'34"W 103.04'
 7. S13°50'26"E 106.9'
 8. N80°32'35"W 70'
 9. N13°55'05"W 151.64'
 10. N76°13'54"E 70'
 11. S13°50'26"E 40'
 12. N68°14'33"E 101.64'
 13. N22°17'16"W 160'
 14. N61°40'34"E 168.69'

- PARCEL 200
1. 500' SPIRAL CURVE RIGHT
LC=N24°25'29"E 8.03'
 2. S61°18'44"E 112.29'
 3. N78°30'26"E 61.97'
 4. N89°36'00"E 104.99'
 5. S82°11'02"E 149.89'
 6. N85°24'40"E 82.99'
 7. N78°30'21"E 240.18'
 8. N70°55'22"E 306.77'
 9. S66°32'50"W 326.69'
 10. S85°24'40"W 226.31'
 11. S85°24'40"W 263.22'
 12. N61°18'44"W 59.08'
 13. S85°24'40"W 88.01'
 14. SW COR SEC 26 BEARS
S10°11'00"W 2000.84'
 15. N38°48'00"W 105.21'

- PARCEL 203
1. THRU 6 FOLLOW
C/L 35' EASEMENT
 1. N52°55'43"E 291.51'
 2. N64°47'40"E 54.75'
 3. N76°39'35"E 161.4'
 4. S71°30'30"E 101.79'
 5. S68°34'52"E 52.1'
 6. N82°31'E 243.1'
 7. N31°36'35"W 292.13'
 8. AND 9. FOLLOW
C/L 35' EASEMENT
 8. N39°32'07"E 576.47'
 9. N43°04'12"E 193.27'
 10. N50°15'52"E 213.27'
 11. N82°01'03"E 155.74'
 12. N15°57'30"W 7.2'
 13. N63°33'17"E 93.06'
 14. N24°38'30"E 81.11'
 15. N7°04'39"W 16.26'
 16. N55°13'57"W 24.16'
 17. N8°02'31"E 35.82'
 18. N13°07'57"W 6.5'
 19. N22°41'48"W 100.29'



Lower Right:
123°14'31"W 42°55'31"N
4187052E 470725N ft