

NE1/4 SEC.24 T30S. R.5W. W.M.
DOUGLAS COUNTY

REVISED ON
8-27-14

30 5 24A

THIS MAP WAS PREPARED FOR
ASSESSMENT PURPOSE ONLY.

1" = 200'

SEE MAP 30 5 24B

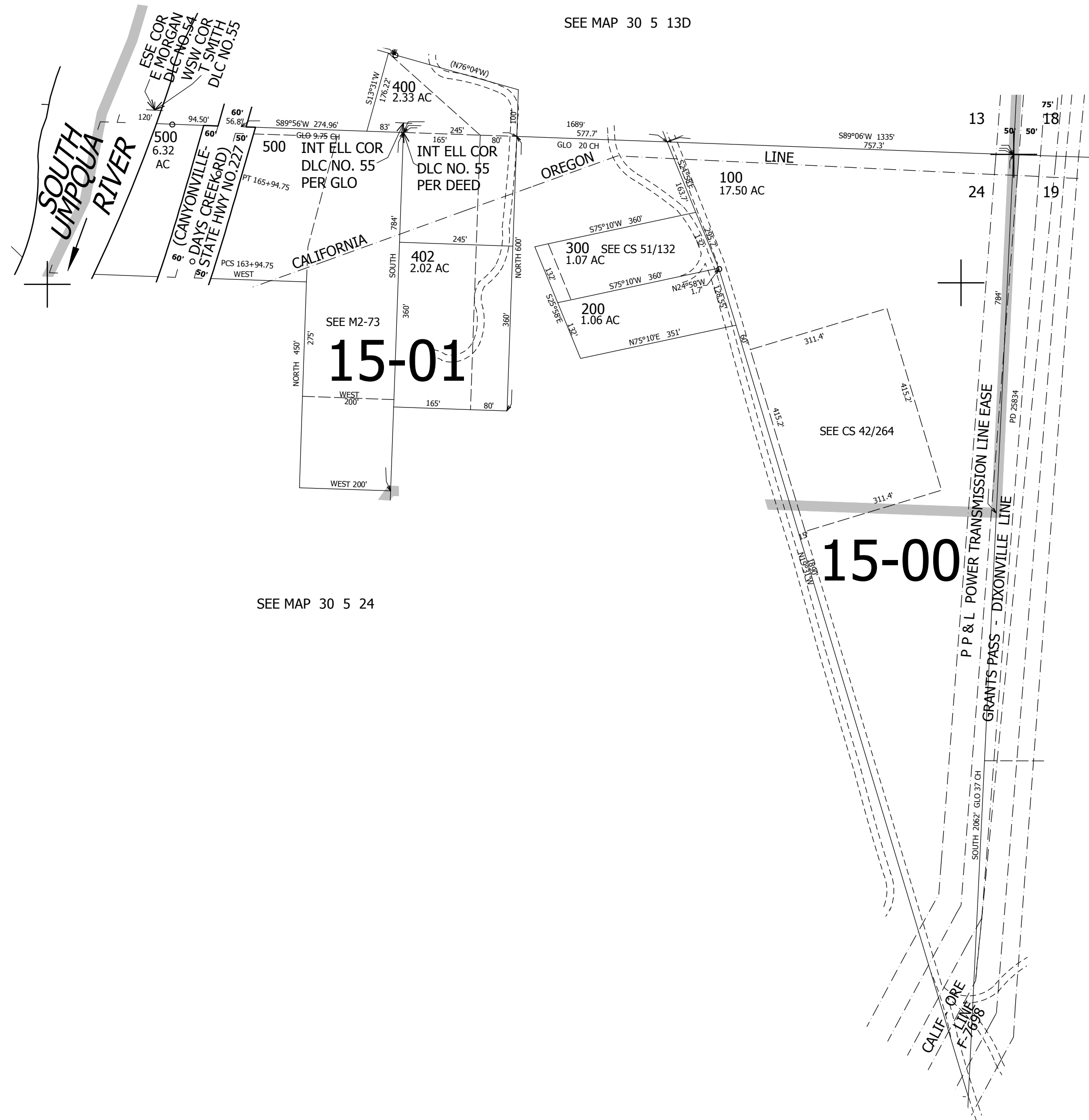
SEE MAP 30 5 13D

SEE MAP 30 5 24

CANCELLED NO'S
401

SEE MAP 30 4 19

1/4
COR



+

+

CEN
SEC

1/4
COR

479,000

4,191,000

30 5 24A