

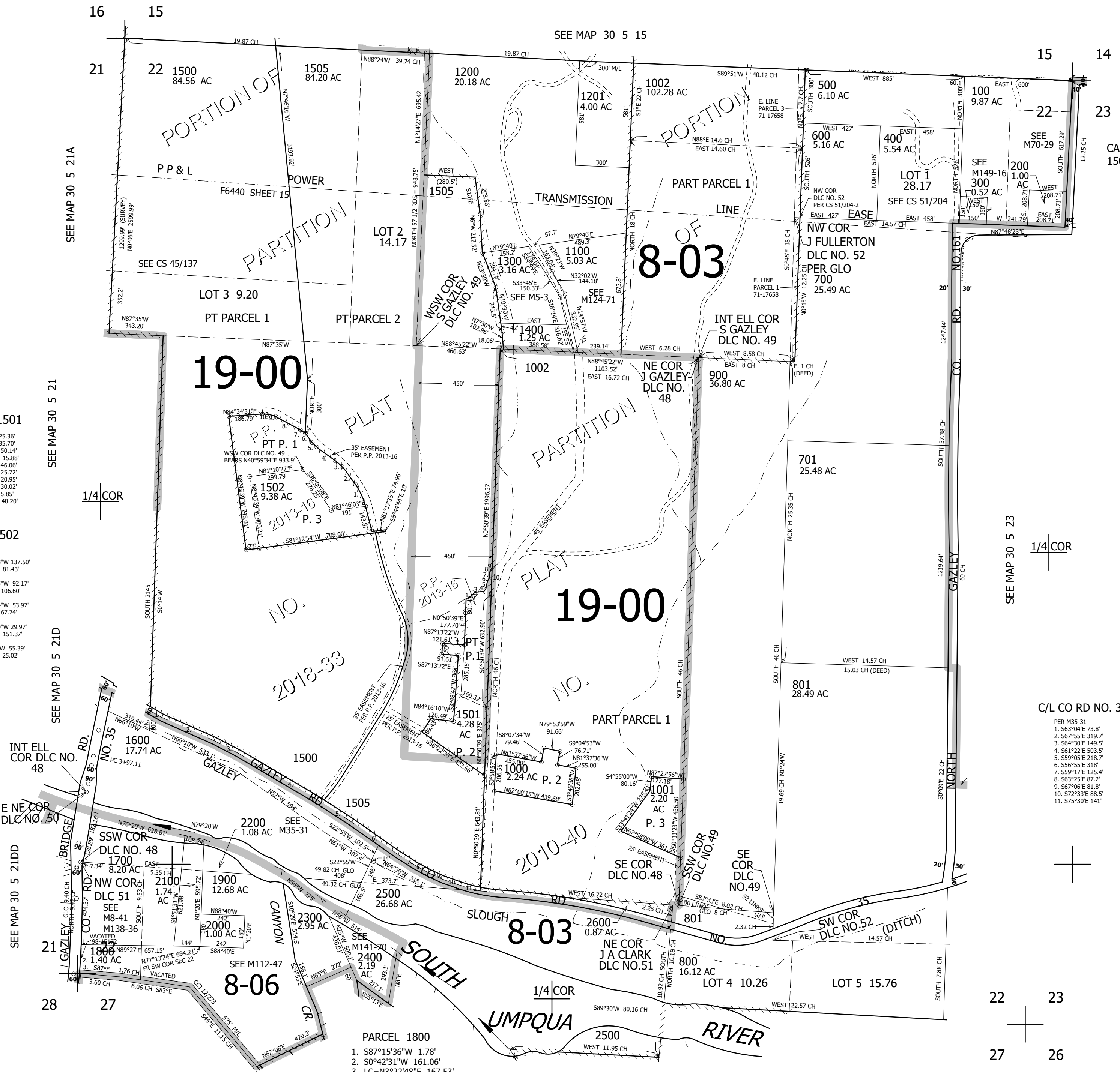
THIS MAP WAS PREPARED FOR ASSESSMENT PURPOSE ONLY.

SEC.22 T30S. R.5W. W.M. DOUGLAS COUNTY

REVISED ON 2-22-22

30 5 22

1" = 400'



PARCEL 1501

1. N67°13'52"E 25.36'
2. N42°22'25"E 35.70'
3. N81°34'34"E 50.14'
4. N42°39'09"E 15.88'
5. N10°22'23"E 46.05'
6. N29°54'52"E 25.72'
7. N11°43'58"W 20.95'
8. N23°38'57"E 30.02'
9. N46°33'54"E 5.85'
10. S0°50'39"W 148.20'

PARCEL 1502

1. R=368.68'
- LC=N26°15'48"W 137.50'
- N37°00'34"W 61.43'
- R=283.30'
- LC=N46°22'15"W 92.17'
- N55°43'56"W 106.60'
- R=286.50'
- LC=N48°22'34"W 53.97'
- N41°01'13"W 67.74'
- R=77.42'
- LC=N52°08'10"W 29.97'
- N63°15'06"W 151.37'
- R=131.11'
- L=N75°26'51"W 55.39'
- N87°38'35"W 25.02'

C/L CO RD NO. 35

- PER M35-31
1. S63°04'E 73.8'
 2. S07°55'E 319.7'
 3. S64°30'E 149.5'
 4. S61°22'E 503.5'
 5. S59°05'E 218.7'
 6. S56°55'E 318'
 7. S59°17'E 125.4'
 8. S63°35'E 87.2'
 9. S67°06'E 81.8'
 10. S72°33'E 88.5'
 11. S75°30'E 141'

PARCEL 1800

1. S87°15'36"W 1.78'
 2. S0°42'31"W 161.06'
 3. LC=N3°22'48"E 167.53'
- A=167.54' R=5759.58'

SEE MAP 30 5 21A

SEE MAP 30 5 21

SEE MAP 30 5 21D

SEE MAP 30 5 21DD

SEE MAP 30 5 15

SEE MAP 30 5 23

SEE MAP 30 5 27A

SEE MAP 30 5 27B

4,181,000

477,500

30 5 22