

THIS MAP WAS PREPARED FOR ASSESSMENT PURPOSE ONLY.

SE1/4 SE1/4 SEC.21 T30S. R.5W. W.M.
DOUGLAS COUNTY
1" = 100'

REVISED ON
8-27-14

30 5 21DD

1/16 COR

1/16 COR

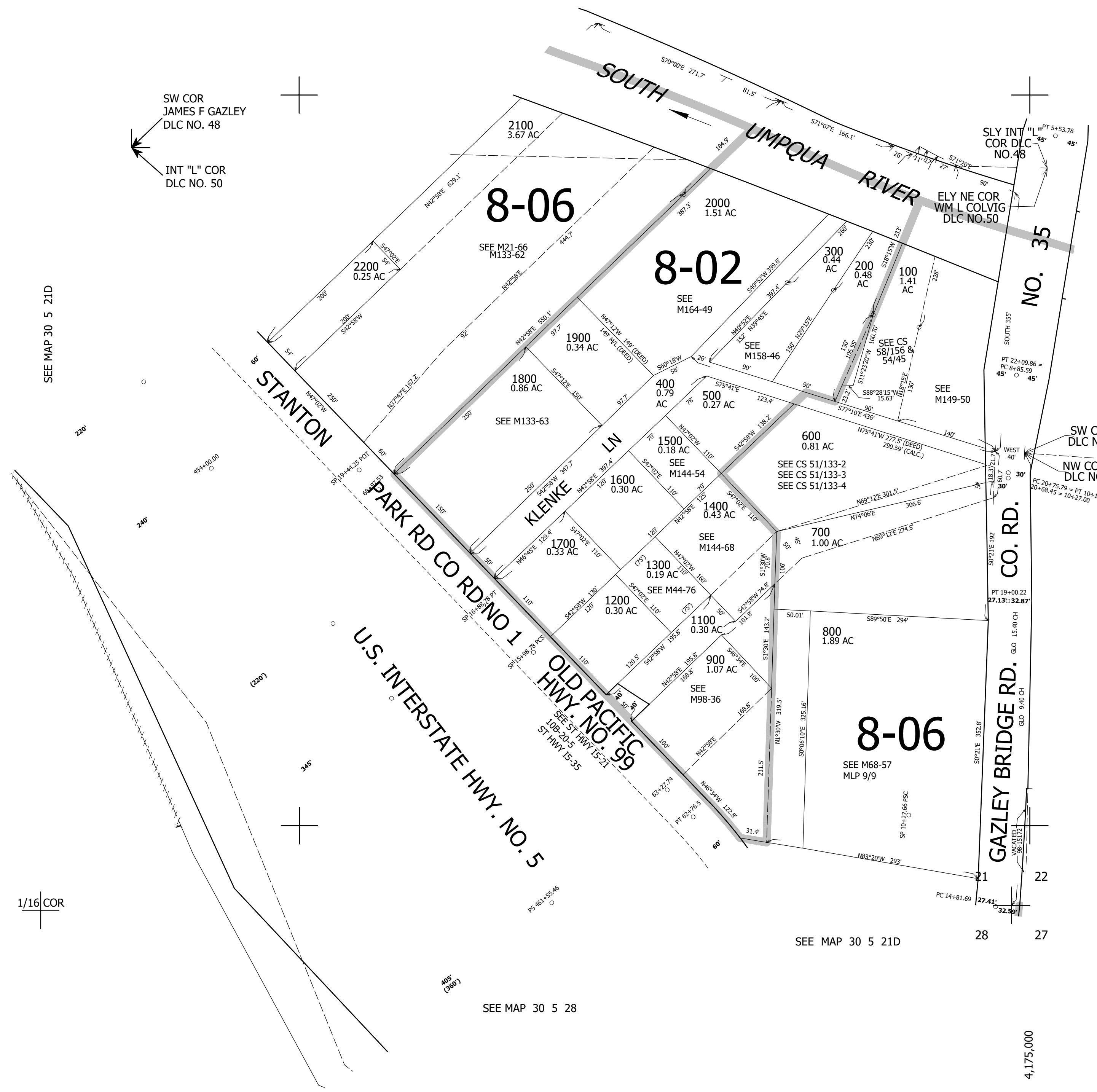
SEE MAP 30 5 21D

CANCELLED NO'S
1000 801 199

SW COR
JAMES F GAZLEY
DLC NO. 48

INT "L" COR
DLC NO. 50

SEE MAP 30 5 21D



SEE MAP 30 5 22

477,000

1/16 COR

SEE MAP 30 5 28

SEE MAP 30 5 21D

28 27

4,175,000

30 5 21DD