

THIS MAP WAS PREPARED FOR ASSESSMENT PURPOSE ONLY.

SE1/4 SEC.21 T30S. R.5W. W.M.  
DOUGLAS COUNTY

REVISED ON  
11-6-19

30 5 21D  
& INDEX

SEE MAP 30 5 21

1" = 200'

1/4 COR.

CANCELLED NO'S  
1103 1105 1106  
1107 800A1 1113  
800A2 801

SEE MAP 30 5 21

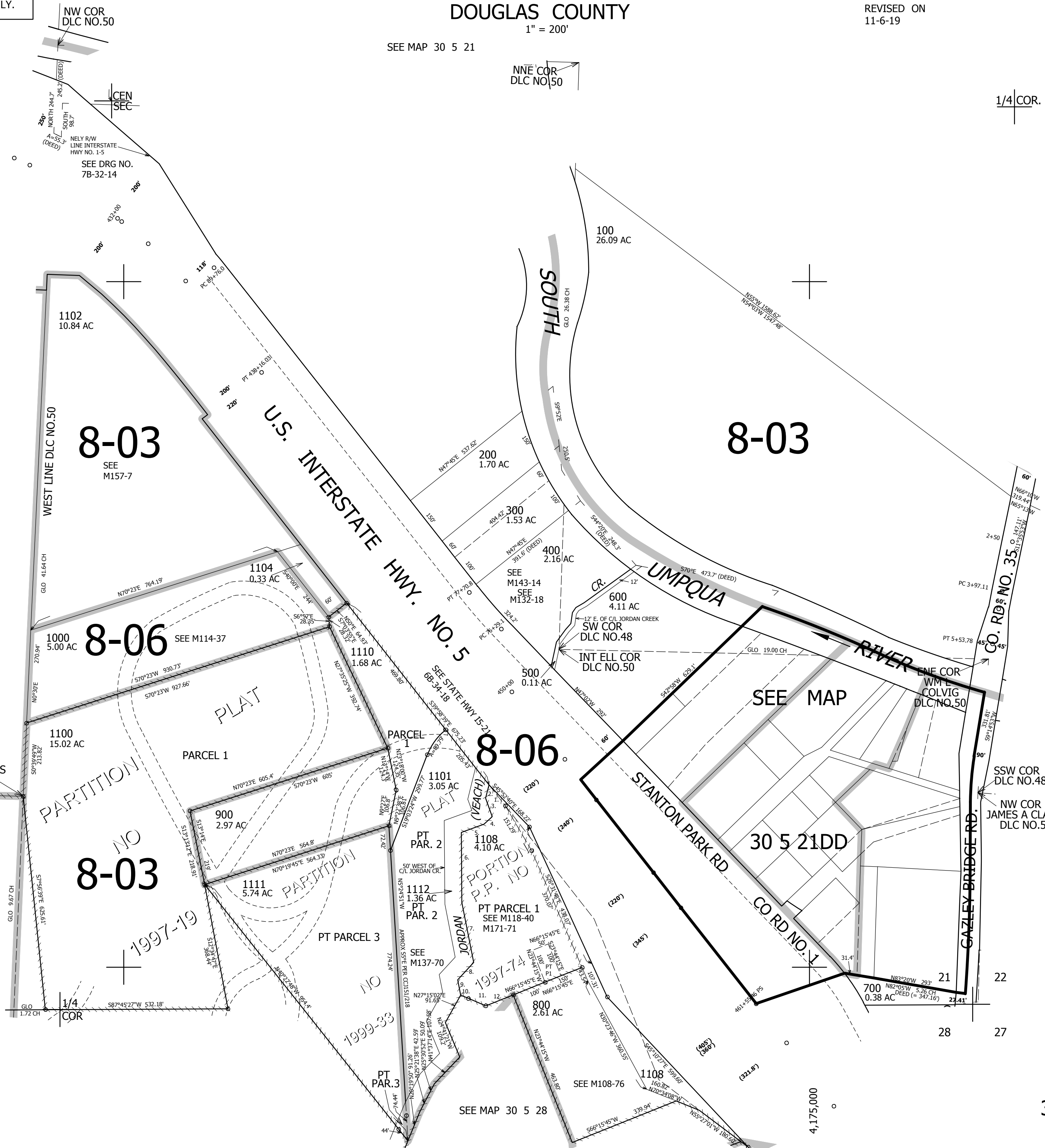
SEE MAP 30 5 22

PARCEL 1108

1. S39°58'39"E 76.89'
2. N11°56'54"E 37.96'
3. N21°53'58"W 57.18'
4. N45°24'29"E 32.66'
5. N68°10'45"E 70.51'
6. N2°26'46"W 204.04'
7. N13°02'09"W 178.21'
8. N40°36'17"E 68.73'
9. N13°03'45"W 45.7'
10. S68°41'06"E 24.32'
11. S68°41'06"E 55.14'
12. N66°15'45"E 86.39'

477,000

30 5 21D  
& INDEX



4,175,000