

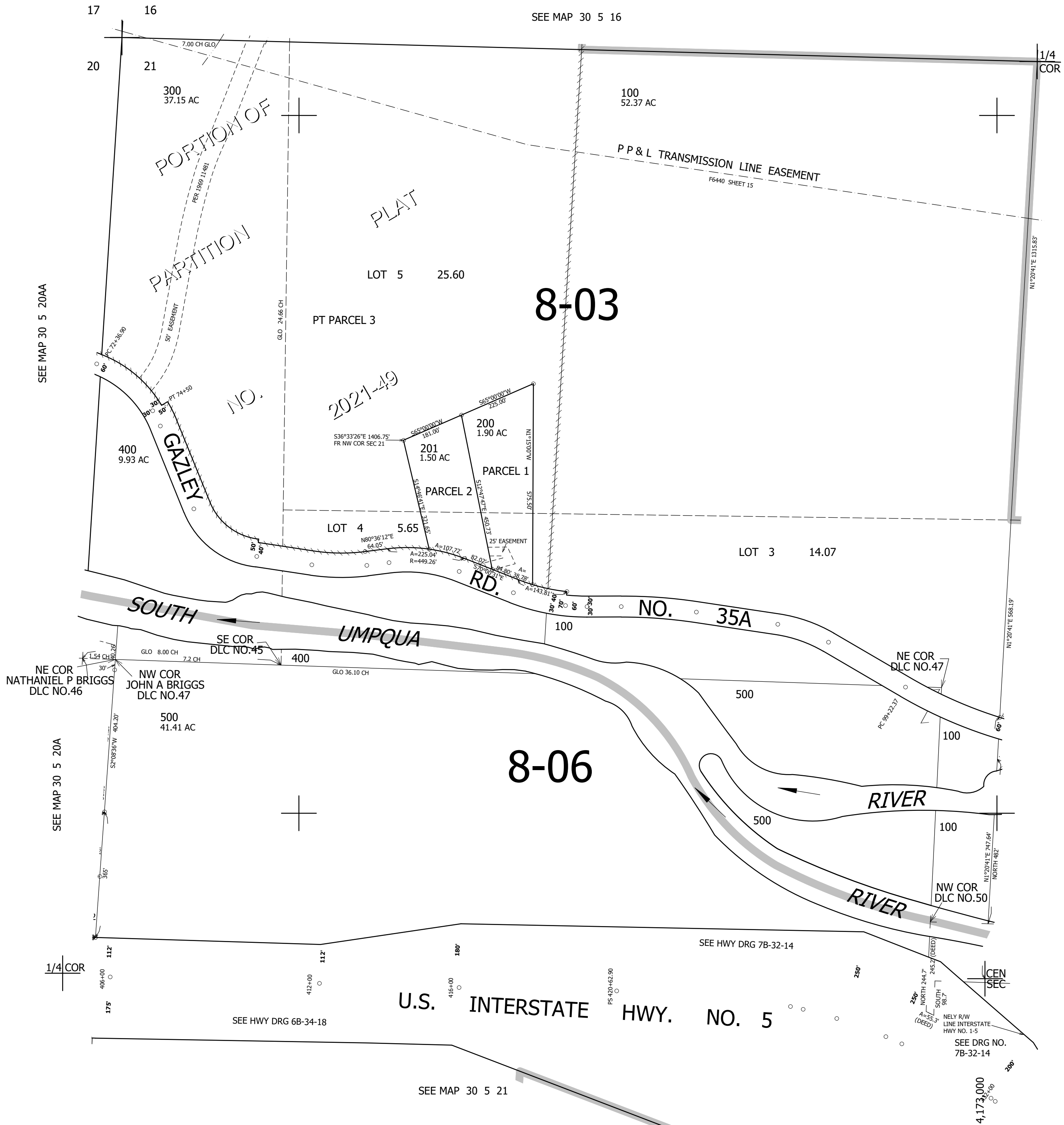
THIS MAP WAS PREPARED FOR ASSESSMENT PURPOSE ONLY.

NW1/4 SEC.21 T30S. R.5W. W.M.
DOUGLAS COUNTY

REVISED ON
11-12-21

30 5 21B

1" = 200'



SEE MAP 30 5 16

1/4 COR

CANCELLED NO'S
202

SEE MAP 30 5 20AA

SEE MAP 30 5 21A

SEE MAP 30 5 20A

480,000

1/4 COR

SEE HWY DRG 6B-34-18

SEE HWY DRG 7B-32-14

SEE MAP 30 5 21

SEE DRG NO.
7B-32-14

4,173,000

30 5 21B