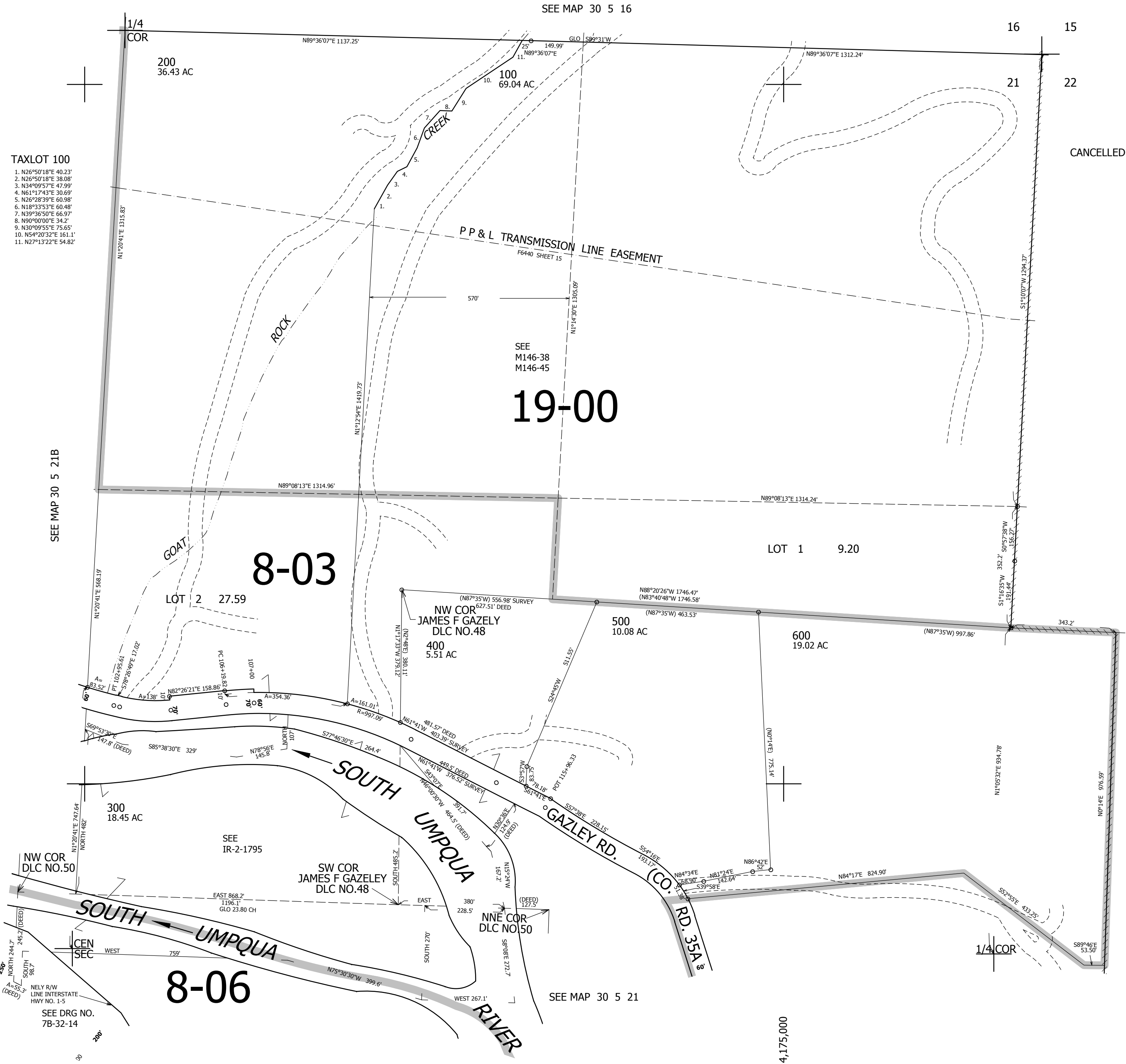


THIS MAP WAS PREPARED FOR ASSESSMENT PURPOSE ONLY.

NE1/4 SEC.21 T30S. R.5W. W.M. DOUGLAS COUNTY  
1" = 200'

REVISED ON 8-26-14

30 5 21A



- TAXLOT 100
1. N26°50'18"E 40.23'
  2. N26°50'18"E 38.08'
  3. N34°09'57"E 47.39'
  4. N61°17'43"E 30.69'
  5. N26°28'39"E 60.98'
  6. N18°33'53"E 60.48'
  7. N39°36'50"E 66.97'
  8. N90°00'00"E 34.2'
  9. N30°09'55"E 75.65'
  10. N54°20'32"E 161.1'
  11. N27°13'22"E 54.82'

SEE MAP 30 5 21B

SEE MAP 30 5 22

SEE MAP 30 5 16

SEE MAP 30 5 21

SEE DRG NO. 7B-32-14

480,000

4,175,000

30 5 21A