

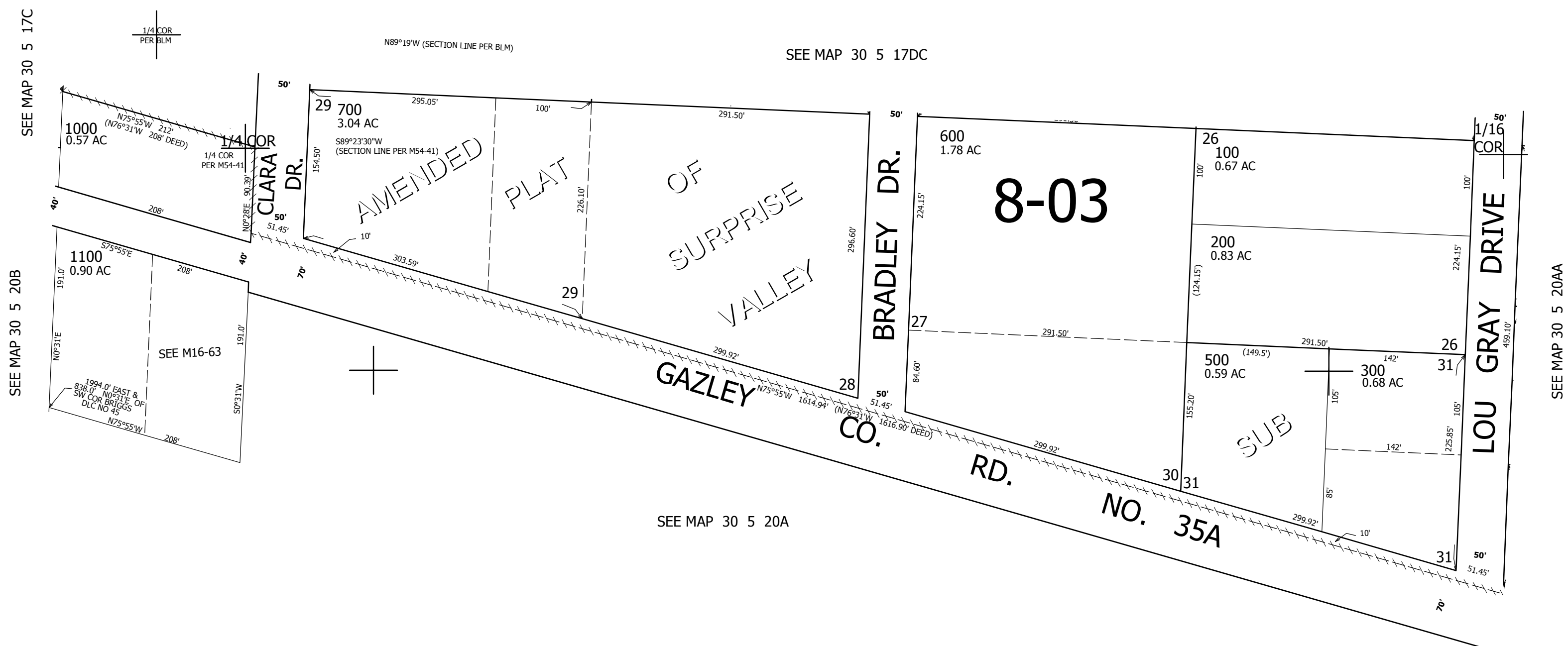
THIS MAP WAS PREPARED FOR ASSESSMENT PURPOSE ONLY.

NW1/4 NE1/4 SEC.20 T30S. R.5W. W.M.
DOUGLAS COUNTY
1" = 100'

REVISED ON
7-29-13

30 5 20AB

CANCELLED NO'S
800 900 400



1/16
COR

+

+

1/16
COR

4,169,000

481,000

30 5 20AB