

THIS MAP WAS PREPARED FOR ASSESSMENT PURPOSE ONLY.

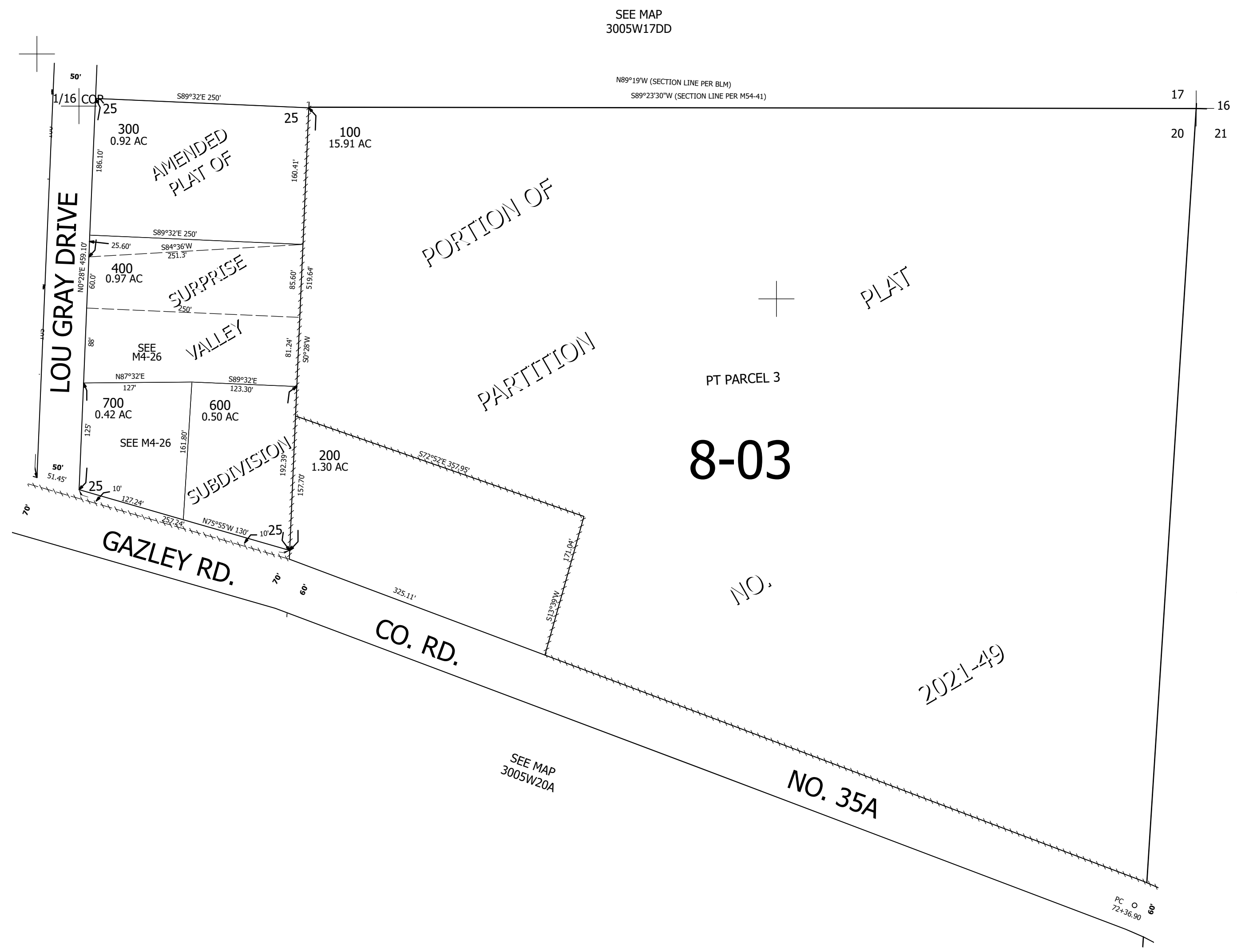
Upper Left:  
123°18'41"W 42°57'23"N  
4168818E 482625N ft

NE1/4 NE1/4 SEC.20 T.30S. R.05W. W.M.  
DOUGLAS COUNTY  
1" = 100'

Date Exported 2026-05-11

300520AA

CANCELLED NOS:  
500



SEE MAP  
3005W20AB

SEE MAP  
3005W17DD

N89°19'W (SECTION LINE PER BLM)  
S89°23'30"W (SECTION LINE PER M54-41)

17 16  
20 21

LOU GRAY DRIVE

AMENDED  
PLAT OF

SURPRISE  
VALLEY

SUBDIVISION

PORTION OF

PARTITION

PLAT

PT PARCEL 3

8-03

NO.

2021-49

GAZLEY RD.

CO. RD.

SEE MAP  
3005W20A

NO. 35A

SEE MAP  
3005W21B

PC O  
72+36.90

1/16 COR

300520AA

Lower Right:  
123°18'14"W 42°57'6"N  
4170790E 480887N ft