

THIS MAP WAS PREPARED FOR ASSESSMENT PURPOSE ONLY.

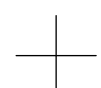
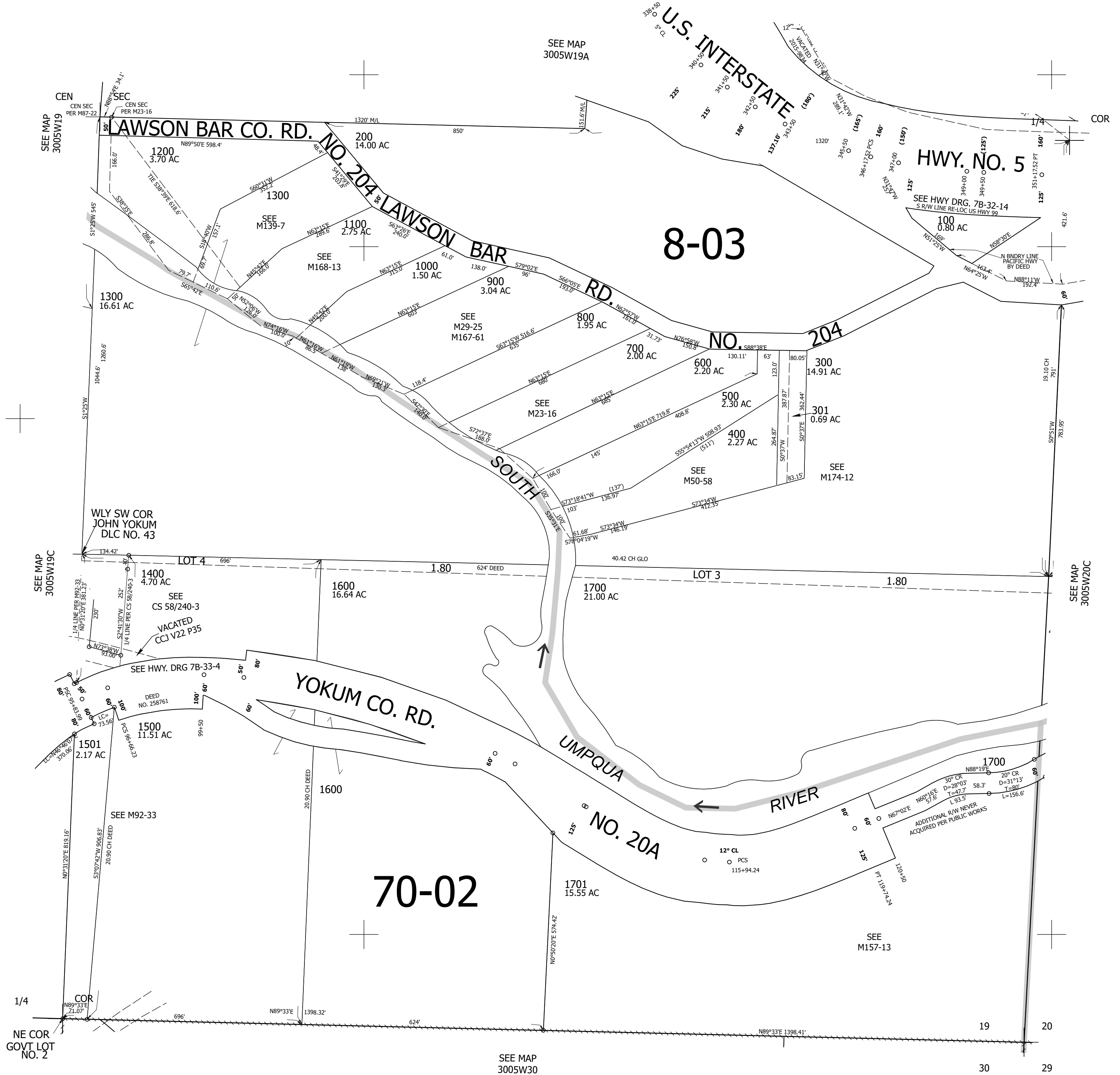
Upper Left:
123°20'18"W 42°56'58"N
4161575E 480415N ft

SE1/4 SEC.19 T.30S. R.05W. W.M.
DOUGLAS COUNTY
1" = 200'

Date Exported 2024-02-15

300519D

CANCELLED NOS:



Lower Right:
123°19'23"W 42°56'25"N
4165500E 476937N ft

300519D