

THIS MAP WAS PREPARED FOR ASSESSMENT PURPOSE ONLY.

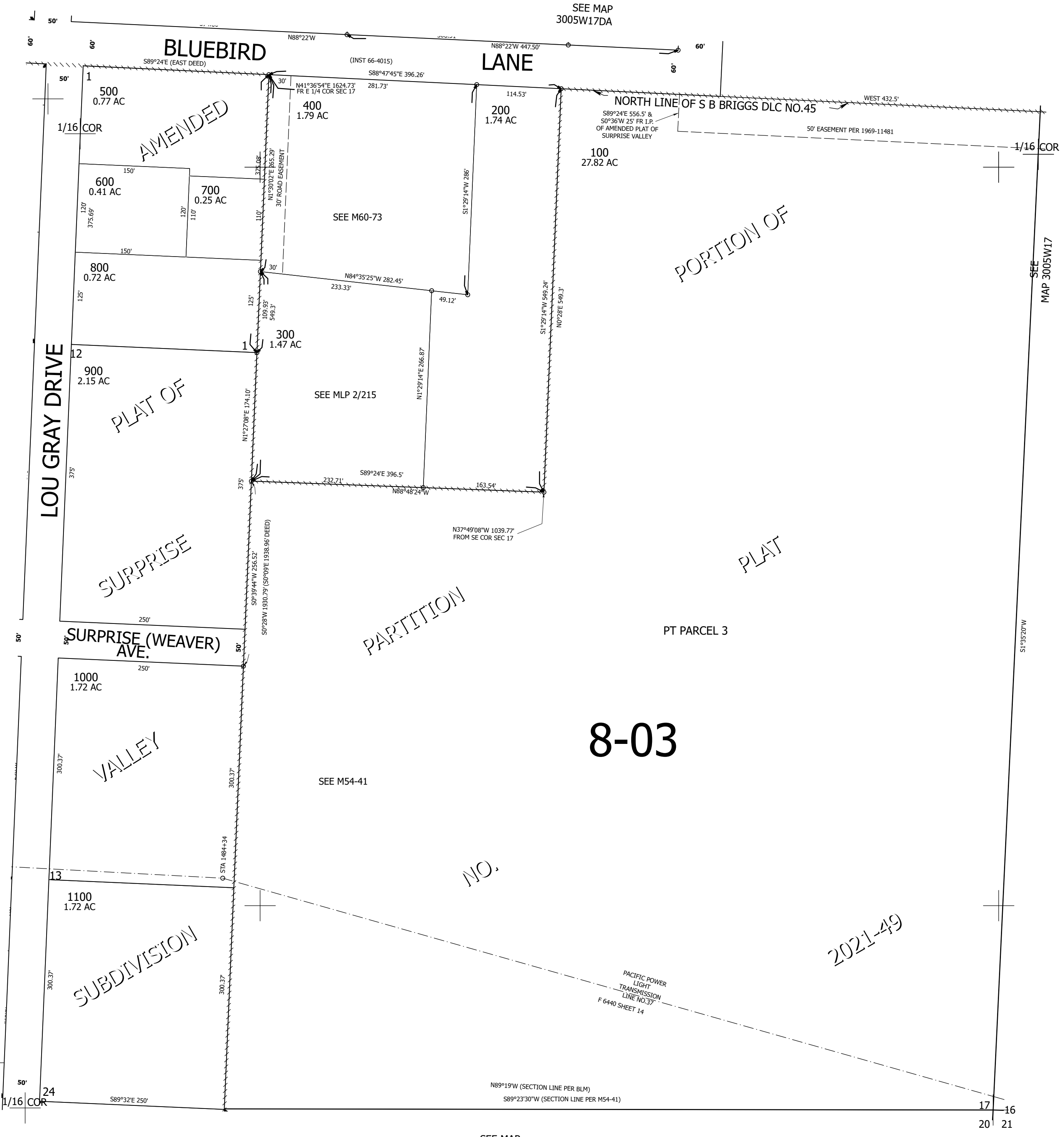
Upper Left:  
123°18'41"W 42°57'34"N  
4168868E 483821N ft

SE1/4 SE1/4 SEC.17 T.30S. R.05W. W.M.  
DOUGLAS COUNTY  
1" = 100'

Date Expored 2025-09-18

300517DD

CANCELLED NOS:



SEE MAP  
3005W17DC

SEE MAP  
3005W16

SEE MAP  
3005W20AA

300517DD

Lower Right:  
123°18'14"W 42°57'18"N  
4170845E 482101N ft