

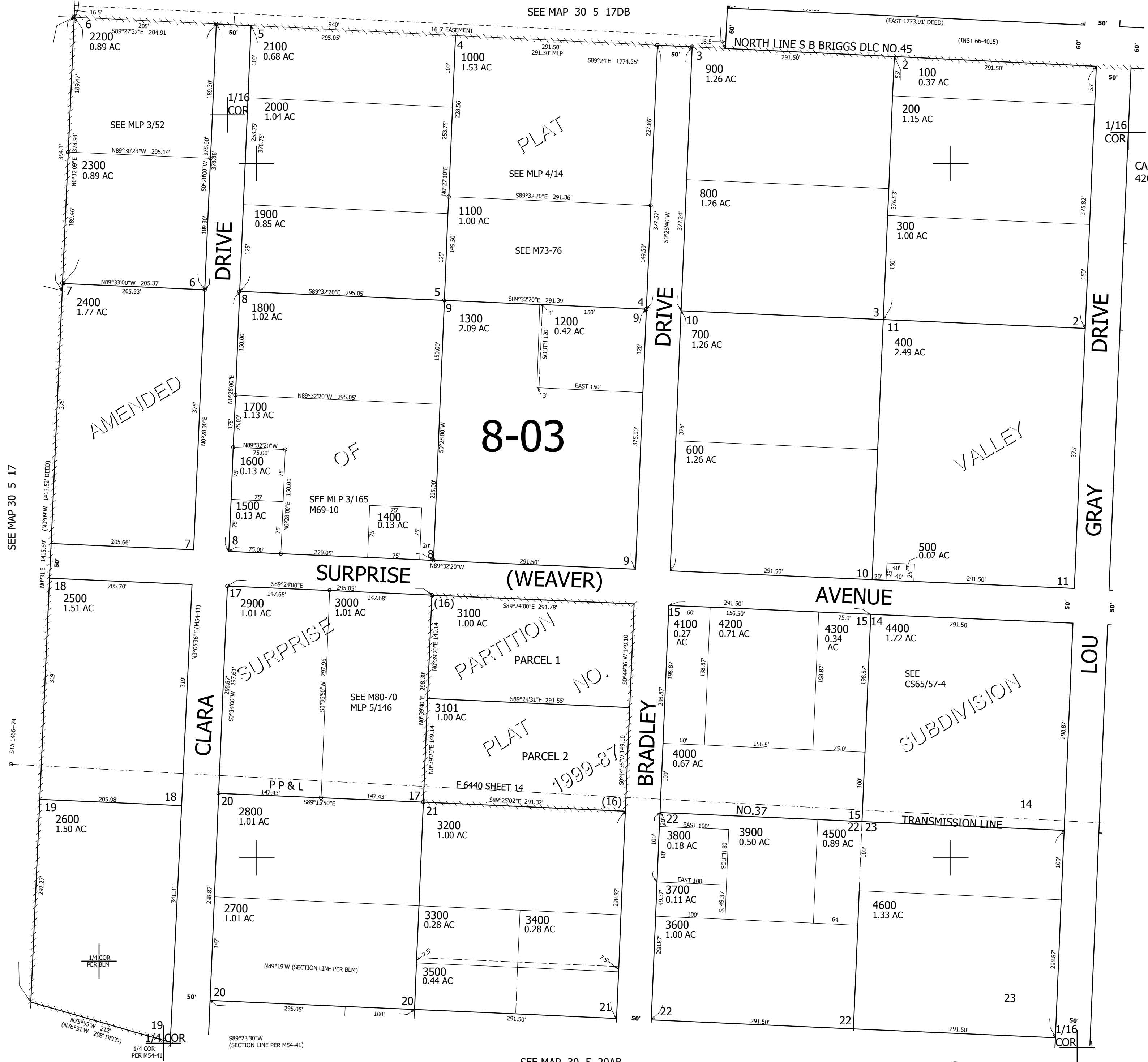
THIS MAP WAS PREPARED FOR ASSESSMENT PURPOSE ONLY.

SW1/4 SE1/4 SEC.17 T30S. R.5W. W.M.
DOUGLAS COUNTY

REVISED ON
7-29-13

30 5 17DC

1" = 100'



CANCELLED NO'S
4200M1 3501 3502

SEE MAP 30 5 17DD

482,500

SEE MAP 30 5 20AB

4,169,000

30 5 17DC