

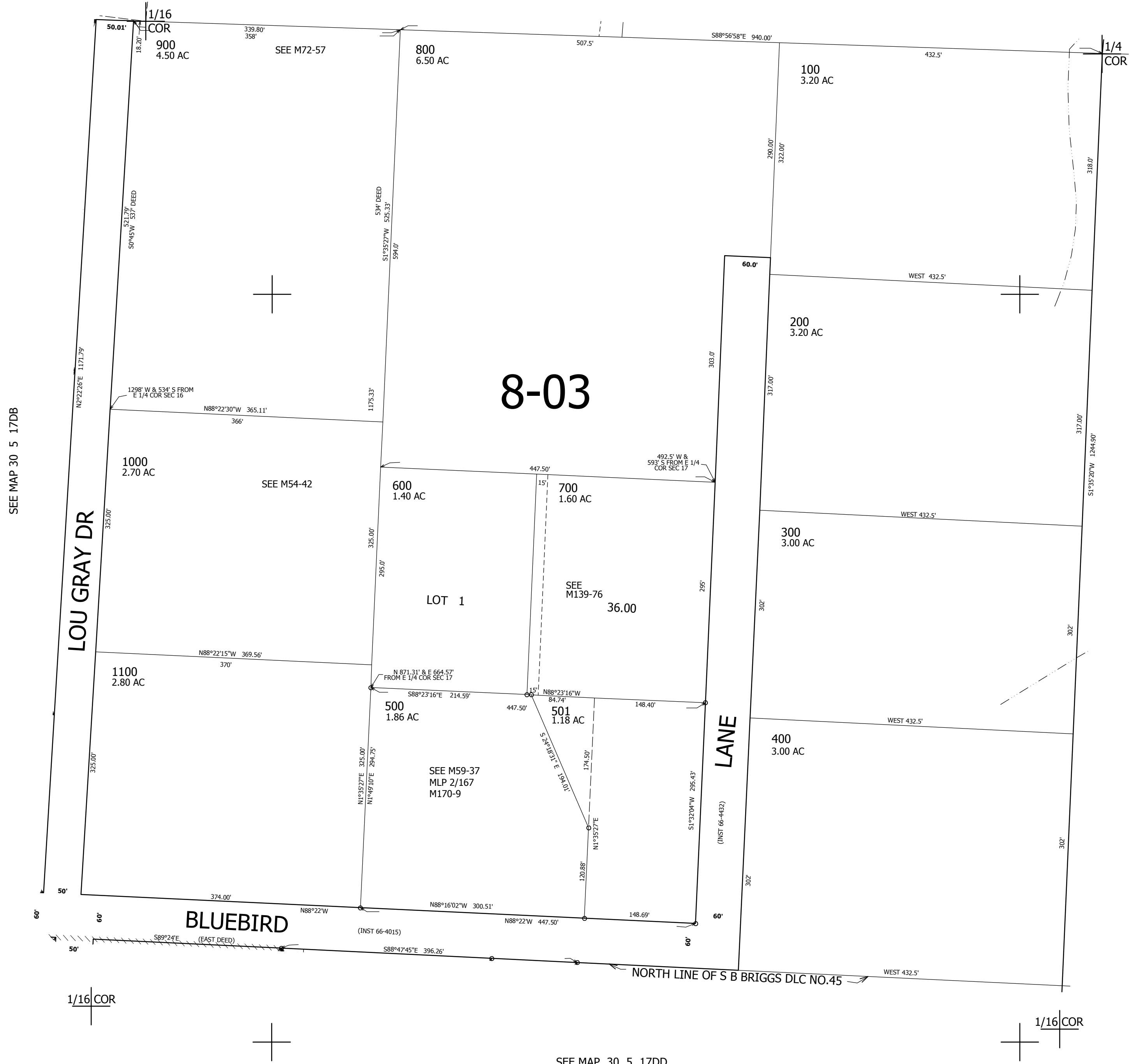
THIS MAP WAS PREPARED FOR ASSESSMENT PURPOSE ONLY.

NE1/4 SE1/4 SEC.17 T30S. R.5W. W.M.
DOUGLAS COUNTY
1" = 100'

REVISED ON
6-27-16

30 5 17DA

SEE MAP 30 5 17



CANCELLED NO'S
502

SEE MAP 30 5 17DB

SEE MAP 30 5 16

SEE MAP 30 5 17DD

483,500

30 5 17DA