

THIS MAP WAS PREPARED FOR ASSESSMENT PURPOSE ONLY.

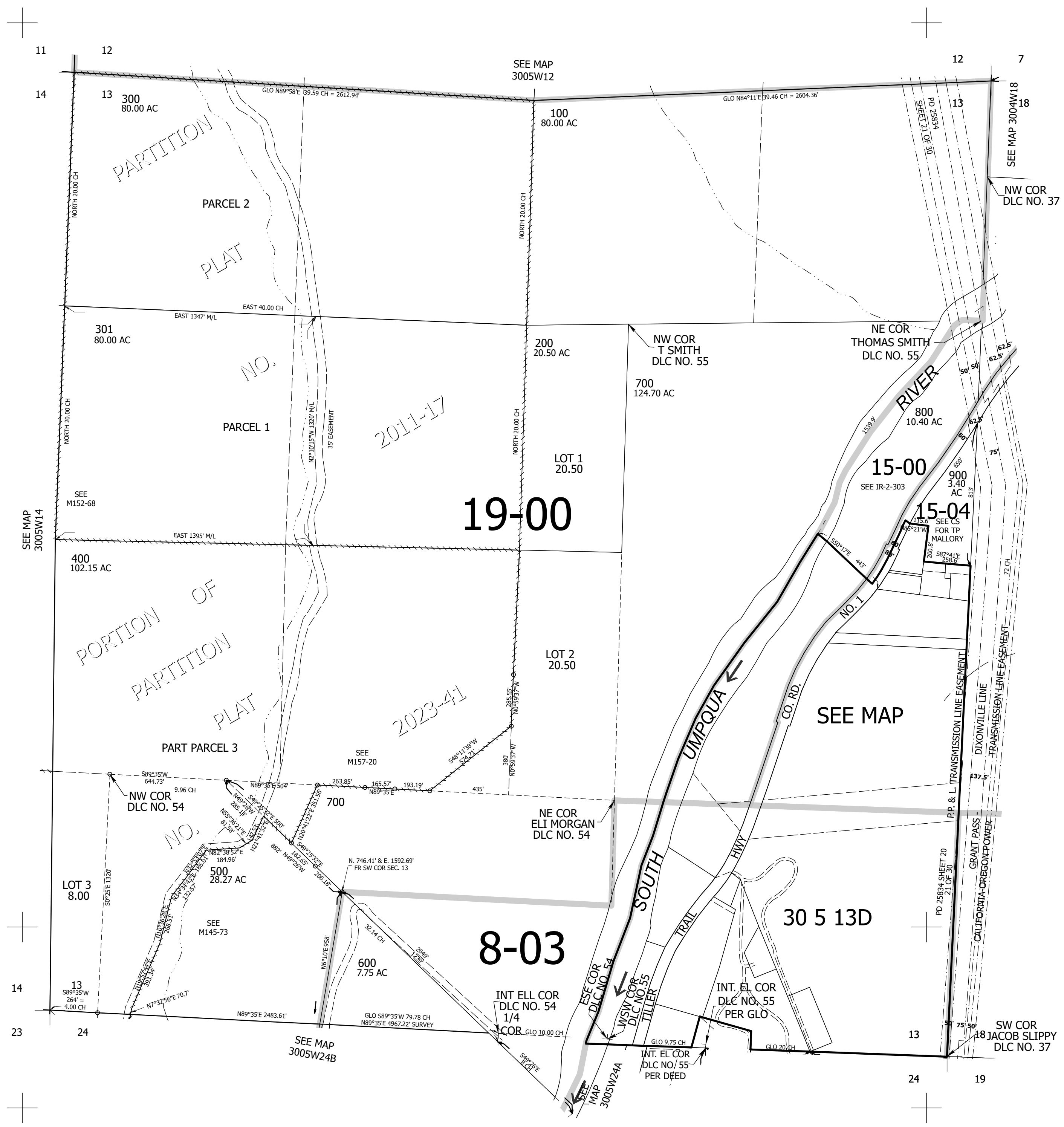
Upper Left:
123°15'6"W 42°58'15"N
4185017E 487360N ft

SEC.13 T.30S. R.05W. W.M.
DOUGLAS COUNTY
1" = 400'

Date Exported 2024-01-08

300513
& INDEX

CANCELLED NOS:
501 401 701



19-00

8-03

30 5 13D

300513
& INDEX

Lower Right:
123°13'17"W 42°57'9"N
4192866E 480405N ft