

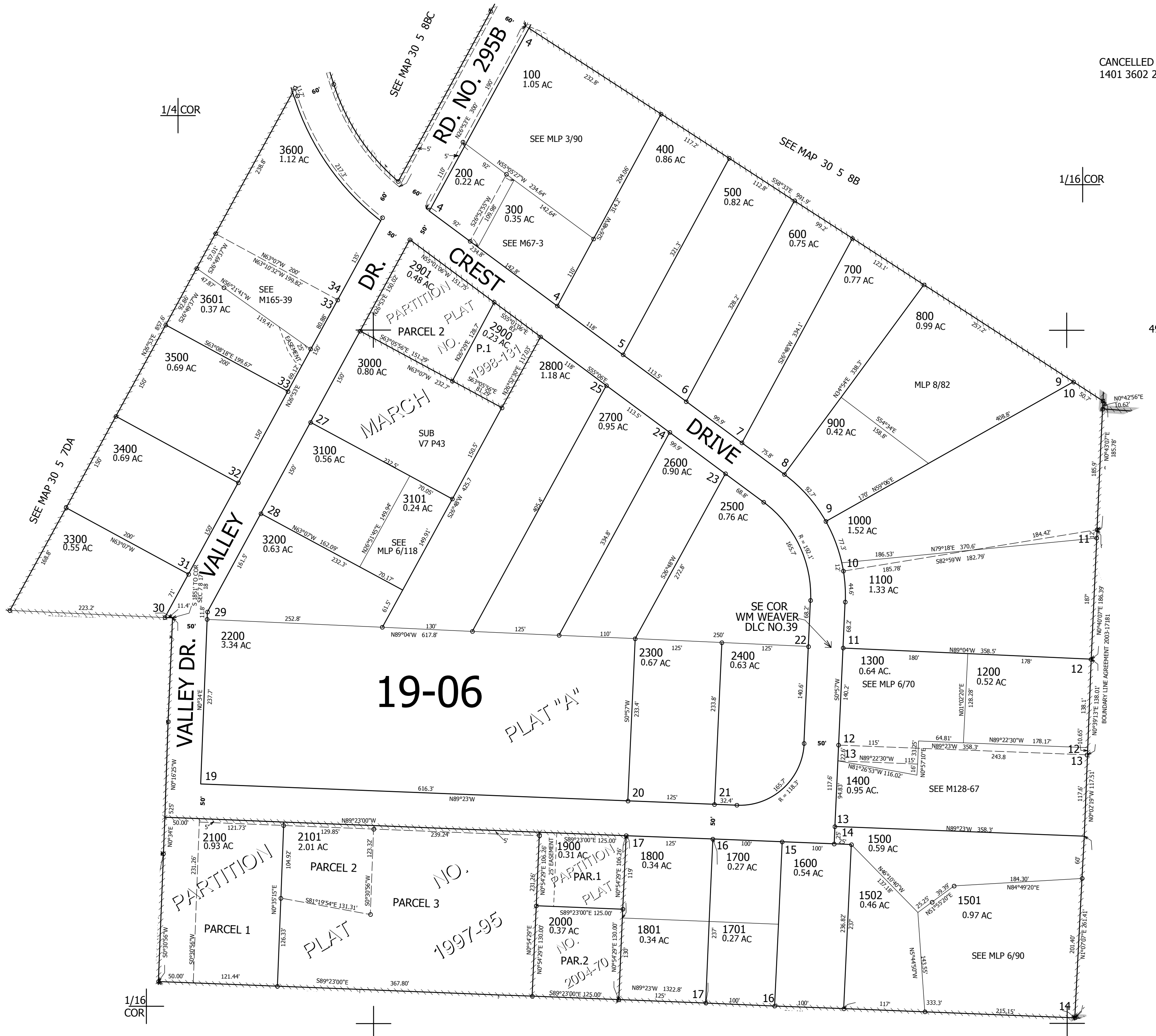
THIS MAP WAS PREPARED FOR ASSESSMENT PURPOSE ONLY.

NW1/4 SW1/4 SEC.8 T30S. R.5W. W.M.
DOUGLAS COUNTY
1" = 100'

REVISED ON
11-6-17

30 5 8CB

CANCELLED NO'S
1401 3602 2102



490,000

SEE MAP 30 5 8CA

1/16 COR

4,166,000

SEE MAP 30 5 8CC

1/16 COR

30 5 8CB