

THIS MAP WAS PREPARED FOR ASSESSMENT PURPOSE ONLY.

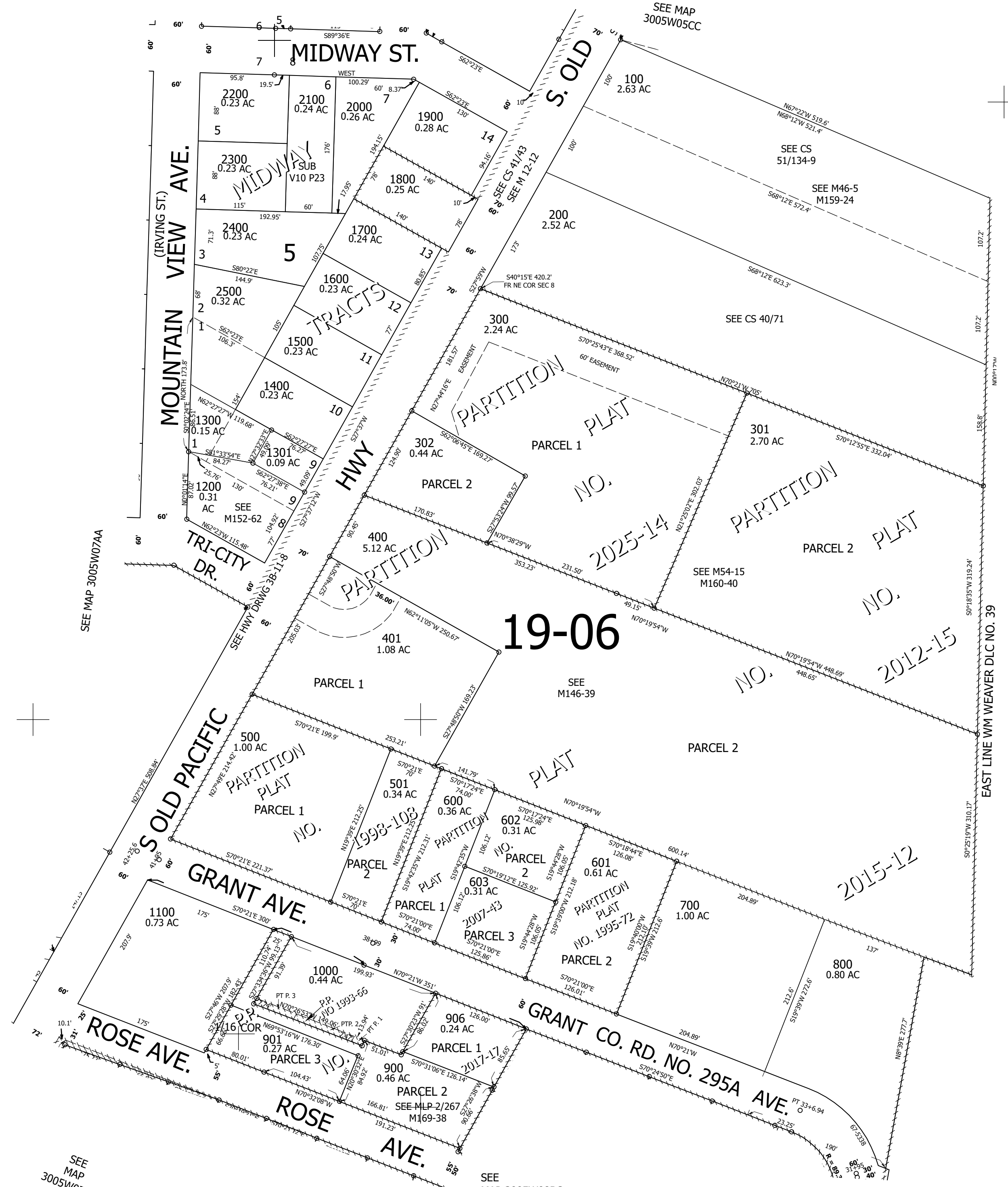
Upper Left:
123°19'36"W 42°59'4"N
4165123E 493022N ft

NW1/4 NW1/4 SEC.08 T.30S. R.05W. W.M.
DOUGLAS COUNTY
1" = 100'

Date Exported 2025-04-30

300508BB

CANCELLED NOS:
2600 1302 903
904 905 907
908 902



SEE MAP 3005W07AA

SEE MAP 3005W07AD

SEE MAP 3005W08BC

SEE MAP 3005W08B

SEE MAP 3005W05CC

1/16 CO

300508BB

Lower Right:
123°19'8"W 42°58'48"N
4167098E 491284N ft