

THIS MAP WAS PREPARED FOR ASSESSMENT PURPOSE ONLY.

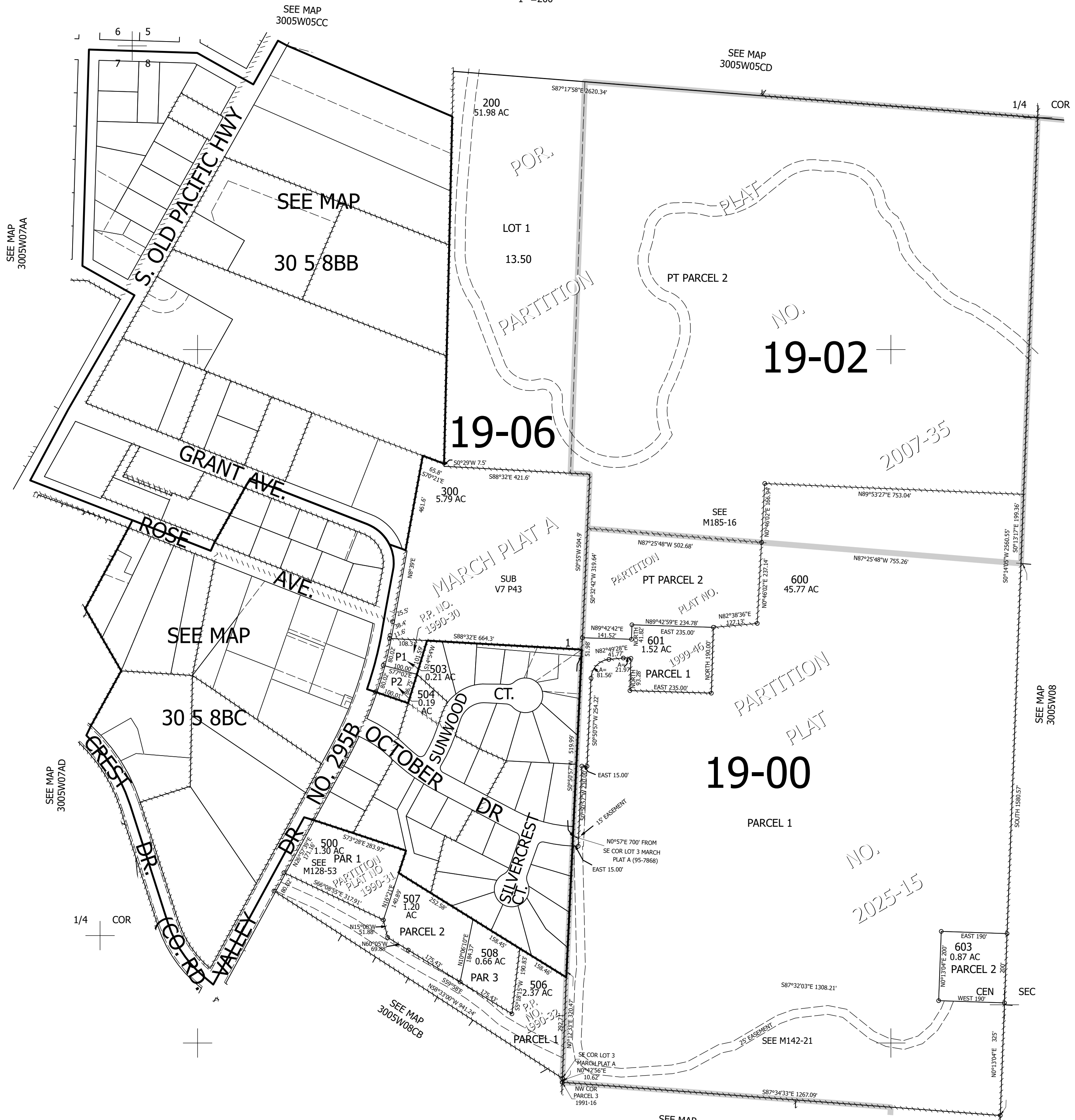
Upper Left:
123°19'37"W 42°59'5"N
4165020E 493083N ft

NW1/4 SEC.08 T.30S. R.05W. W.M.
DOUGLAS COUNTY
1" = 200'

Date Exported 2025-05-07

300508B
& INDEX

CANCELLED NOS:
505 511 501
200A1 502 509
510 400 100
201 602



SEE MAP
3005W07AA

SEE MAP
3005W05CC

SEE MAP
3005W05CD

SEE MAP
3005W07AD

SEE MAP

SEE MAP
3005W08CB

SEE MAP
3005W08CA

SEE MAP
3005W08

1/4 COR

1/4 COR

SEC

300508B
& INDEX

Lower Right:
123°18'43"W 42°58'32"N
4168945E 489605N ft