

THIS MAP WAS PREPARED FOR ASSESSMENT PURPOSE ONLY.

SE1/4 SE1/4 SEC.7 T30S. R.5W. W.M. DOUGLAS COUNTY

1" = 100'

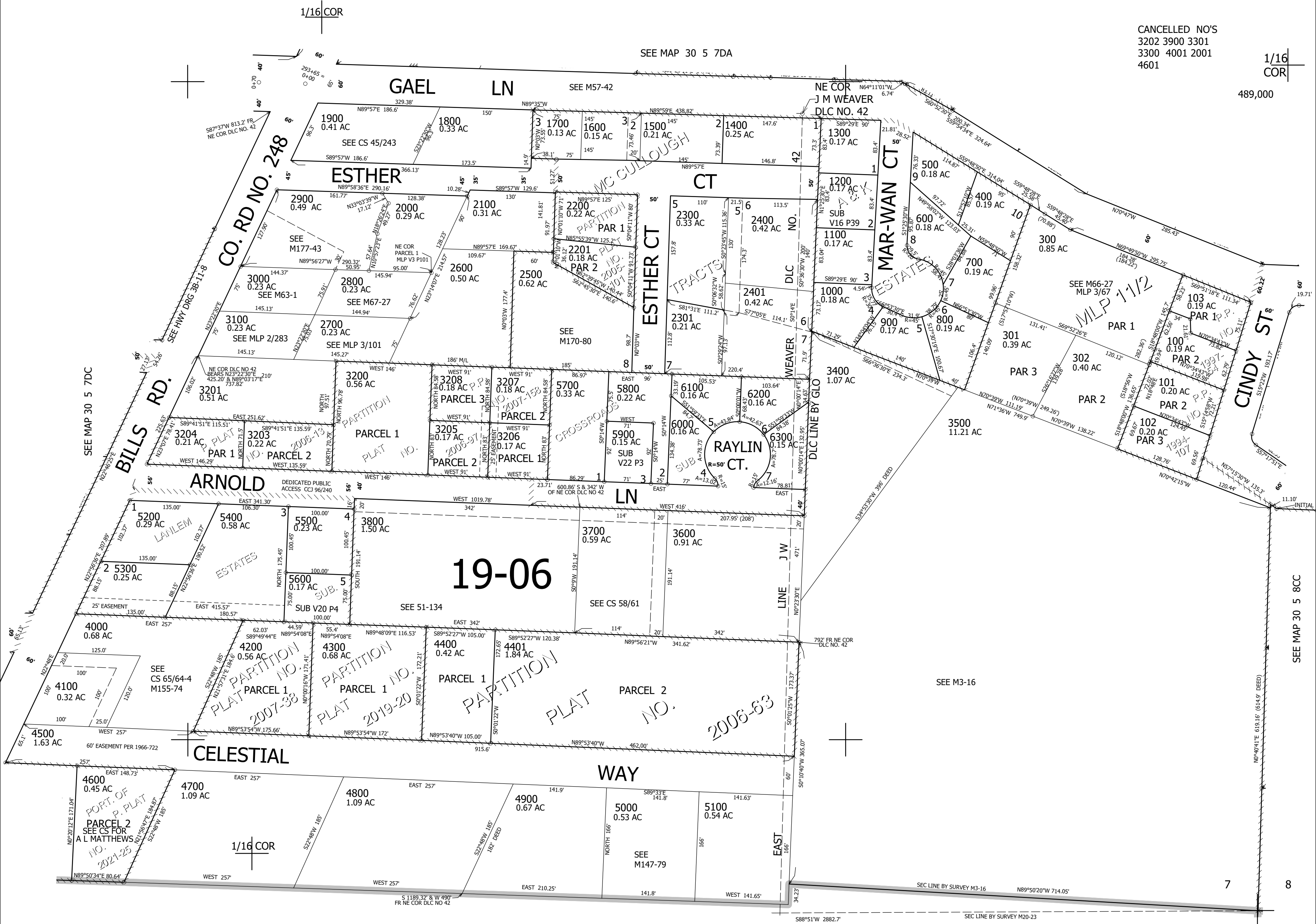
REVISED ON 6-21-21

30 5 7DD

CANCELLED NO'S 3202 3900 3301 3300 4001 2001 4601

1/16 COR

489,000



SEE MAP 30 5 18

4,165,000

30 5 7DD

18 17