

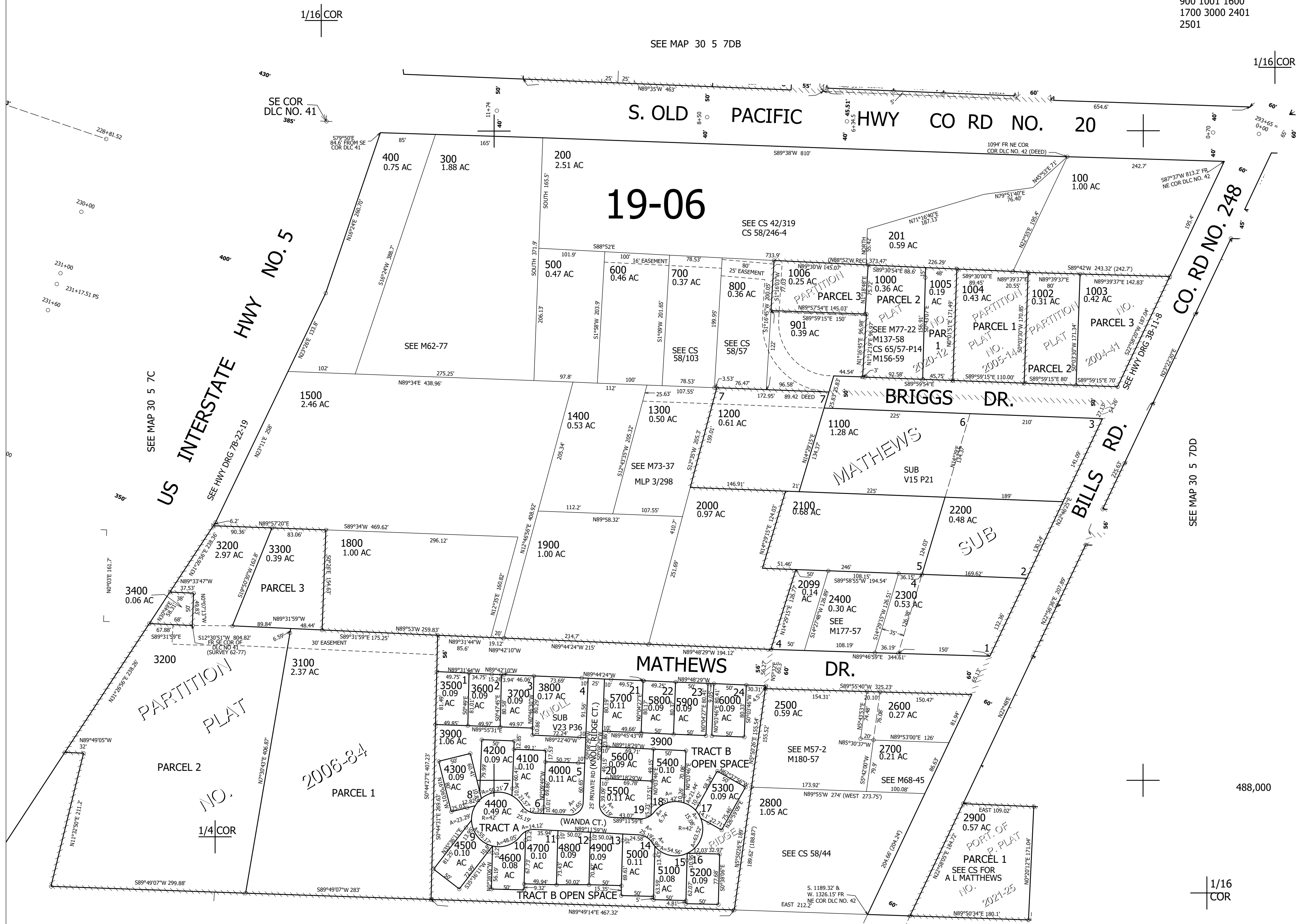
THIS MAP WAS PREPARED FOR ASSESSMENT PURPOSE ONLY.

SW1/4 SE1/4 SEC.7 T30S. R.5W. W.M.
DOUGLAS COUNTY
1" = 100'

REVISED ON
11-5-21

30 5 7DC

CANCELLED NO'S
900 1001 1600
1700 3000 2401
2501



SEE MAP 30 5 7DB

19-06

US INTERSTATE HWY NO. 5
SEE MAP 30 5 7C
SEE HWY DRG 78-22-19

SEE MAP 30 5 7DD

SEE MAP 30 5 18

4,164,000

30 5 7DC