

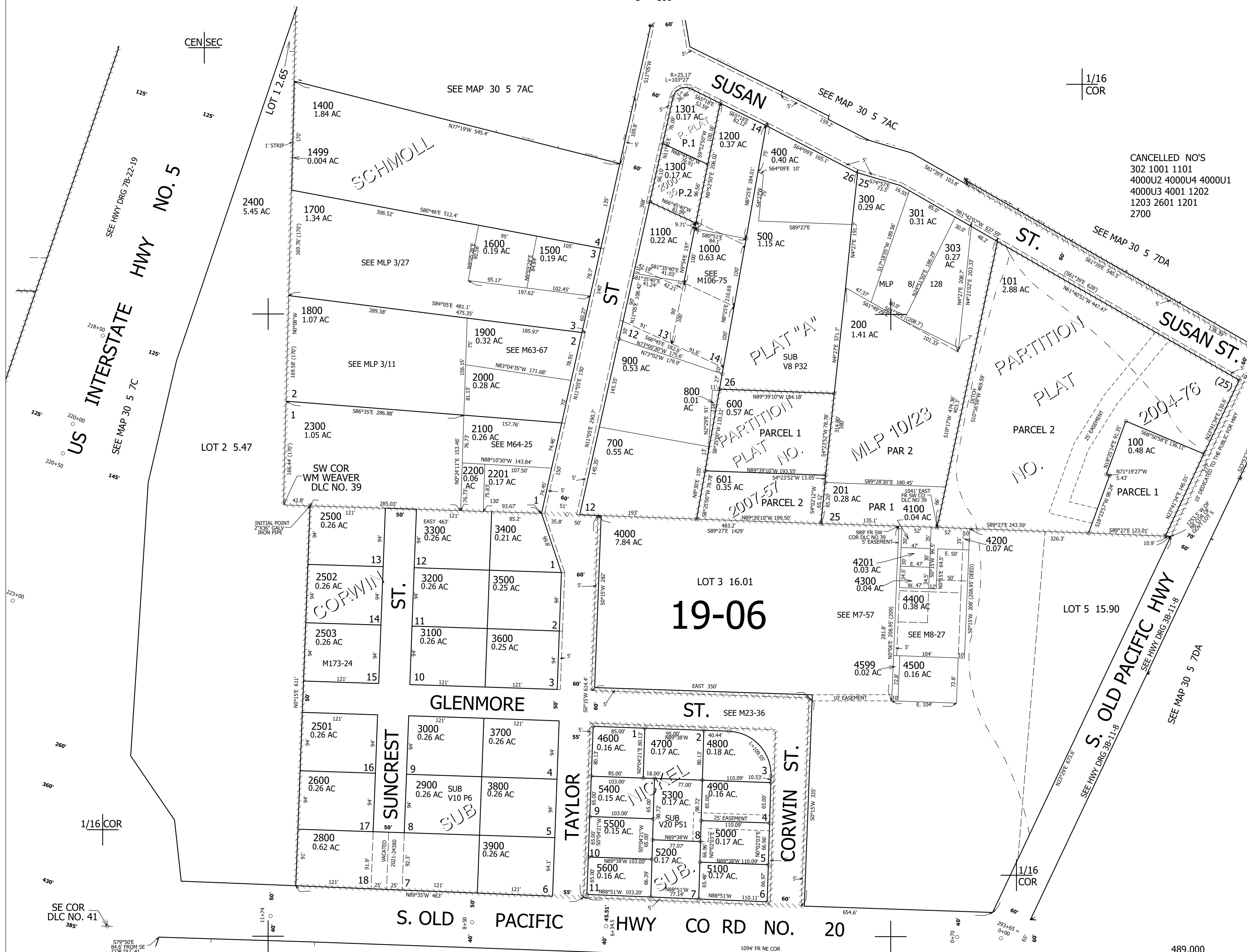
THIS MAP WAS PREPARED FOR ASSESSMENT PURPOSE ONLY.

NW1/4 SE1/4 SEC.7 T30S. R.5W. W.M. DOUGLAS COUNTY

REVISED ON 5-19-22

30 5 7DB

1" = 100'



CANCELLED NO'S
 302 1001 1101
 4000U2 4000U4 4000U1
 4000U3 4001 1202
 1203 2601 1201
 2700

SE COR
 DLC NO. 41
 385'

579°50'E
 84.5 FROM SE
 COR DLC 41

SEE MAP 30 5 7DC

4,164,000

30 5 7DB

489,000