

THIS MAP WAS PREPARED FOR ASSESSMENT PURPOSE ONLY.

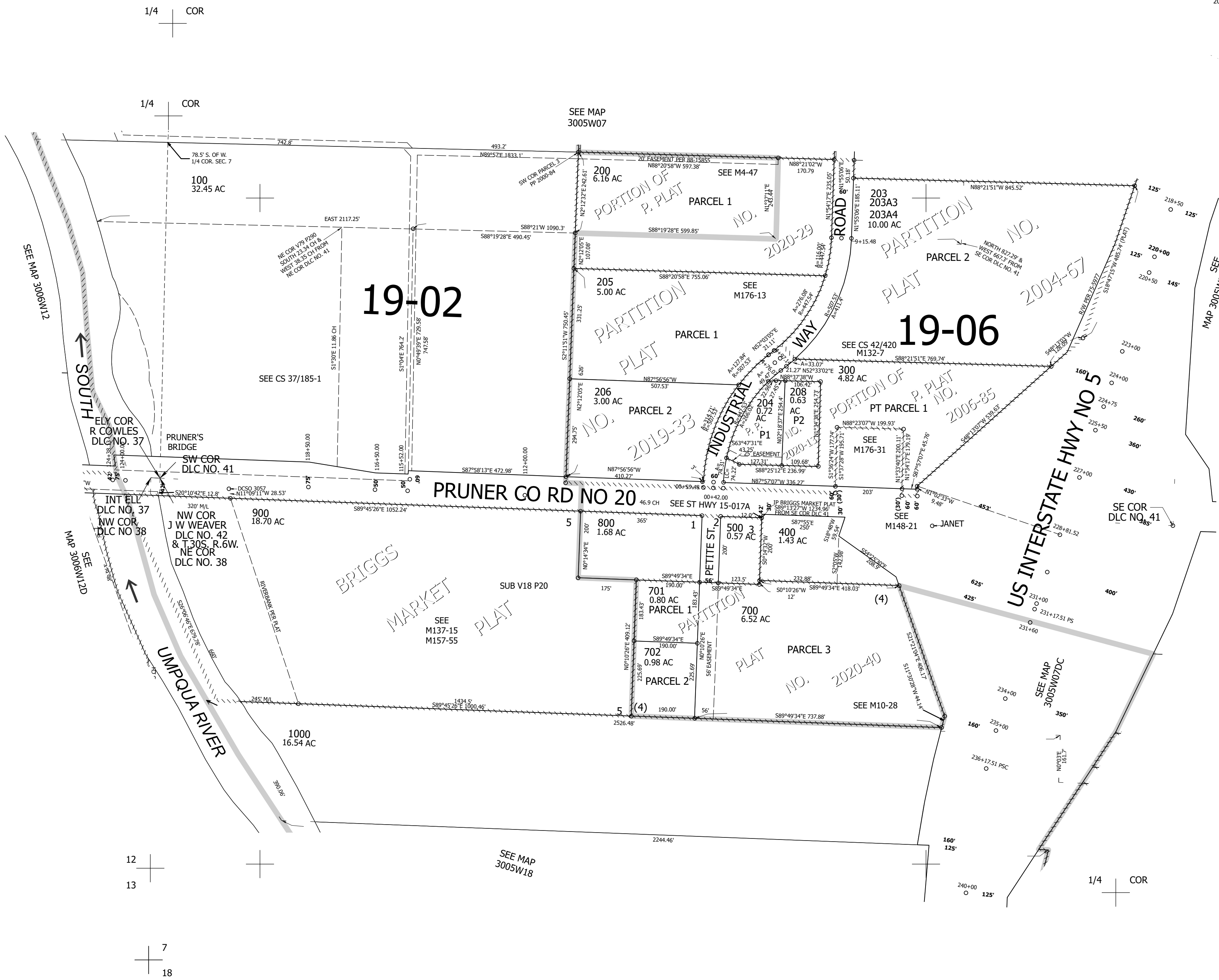
Upper Left:
123°20'56"W 42°58'40"N
4159089E 490776N ft

SW1/4 SEC.07 T.30S. R.05W. W.M.
DOUGLAS COUNTY
1" = 200'

Date Exported 2024-07-30

300507C
& INDEX
Myrtle Creek

CANCELLED NOS:
600 201 202
101 1100 1200
207 203A1 203A2



300507C
& INDEX
Myrtle Creek

Lower Right:
123°20'1"W 42°58'7"N
4163013E 487299N ft