

THIS MAP WAS PREPARED FOR ASSESSMENT PURPOSE ONLY.

SE1/4 SE1/4 SEC.6 T30S. R.5W. W.M.
DOUGLAS COUNTY

1" = 100'

REVISED ON
6-12-12

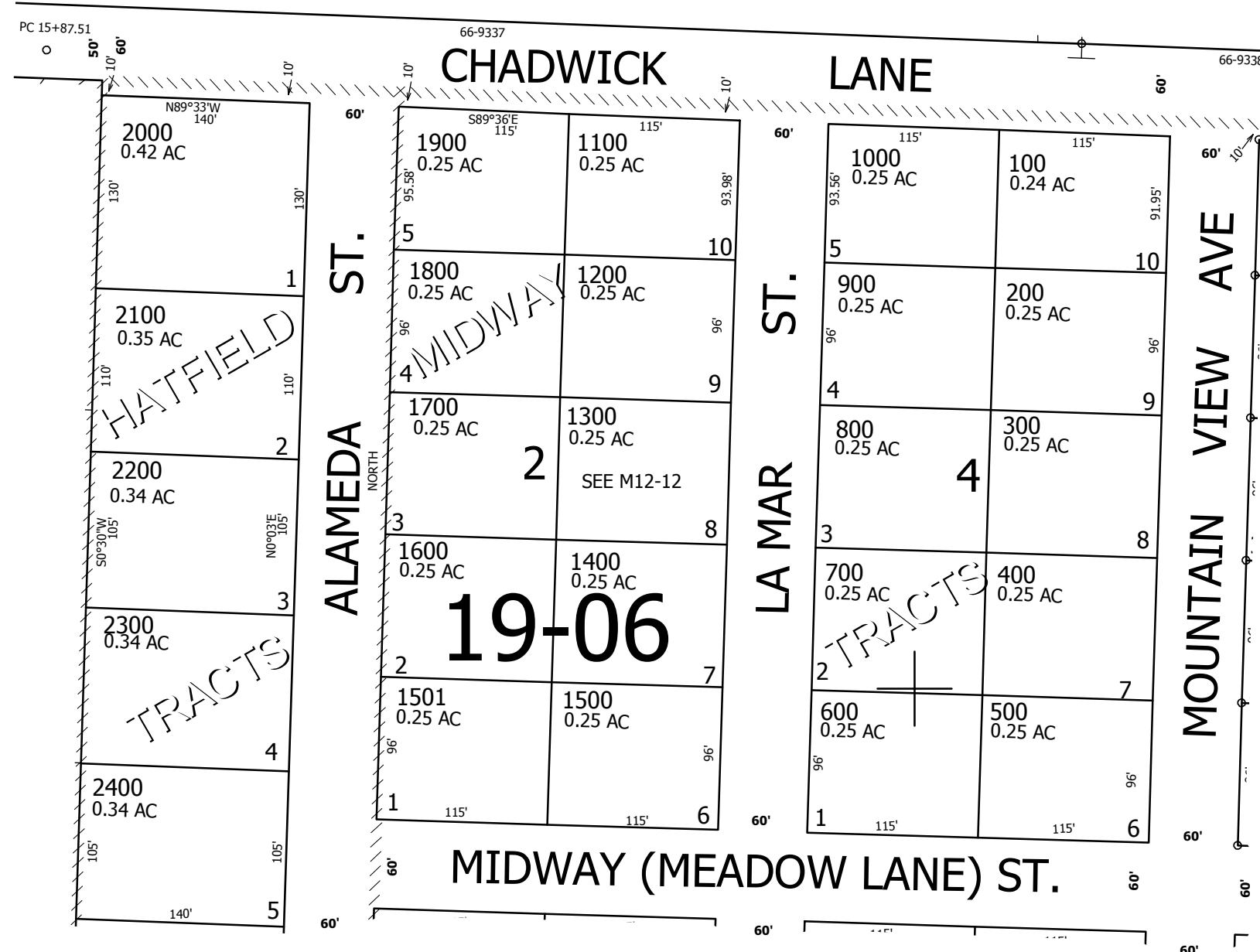
30 5 6DD

1/16 COR

1/16 COR

CANCELLED NO'S

SEE MAP 30 5 6



SEE MAP 30 5 5CC

493,000

SEE MAP 30 5 7AA

4,165,500

30 5 6DD