

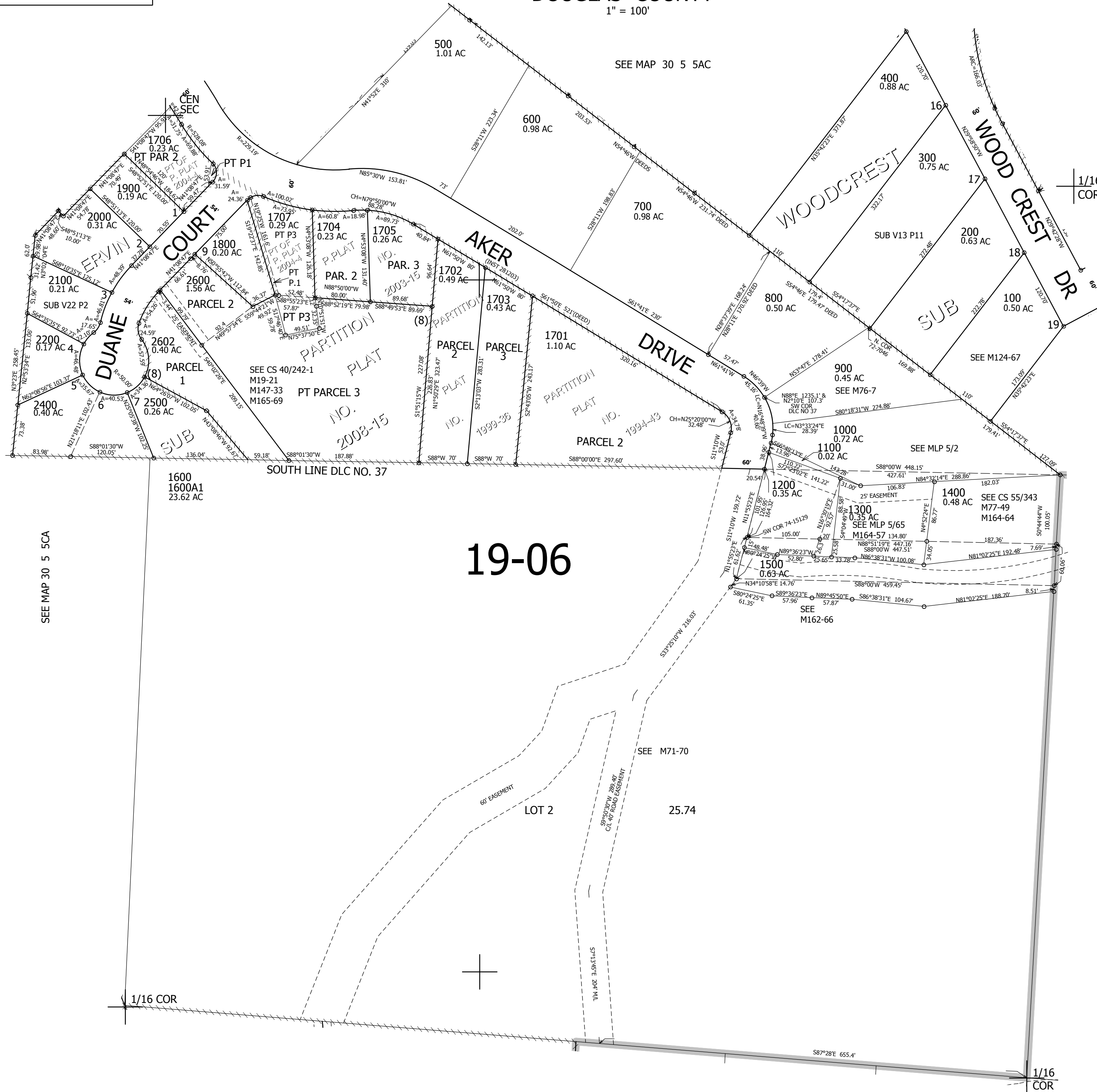
THIS MAP WAS PREPARED FOR ASSESSMENT PURPOSE ONLY.

NW1/4 SE1/4 SEC.5 T30S. R.5W. W.M. DOUGLAS COUNTY

REVISED ON
2-20-20

30 5 5DB

1" = 100'



1/16
COR

CANCELLED NO'S
 1708 1709 1710
 1711 1712 1713
 1714 1700 1801
 1601 1501 1502
 1503 1504 2601
 2603 2300

SEE MAP 30 5 5DA

SEE MAP 30 5 5CA

19-06

494,000

4,170,000

30 5 5DB

SEE MAP 30 5 5