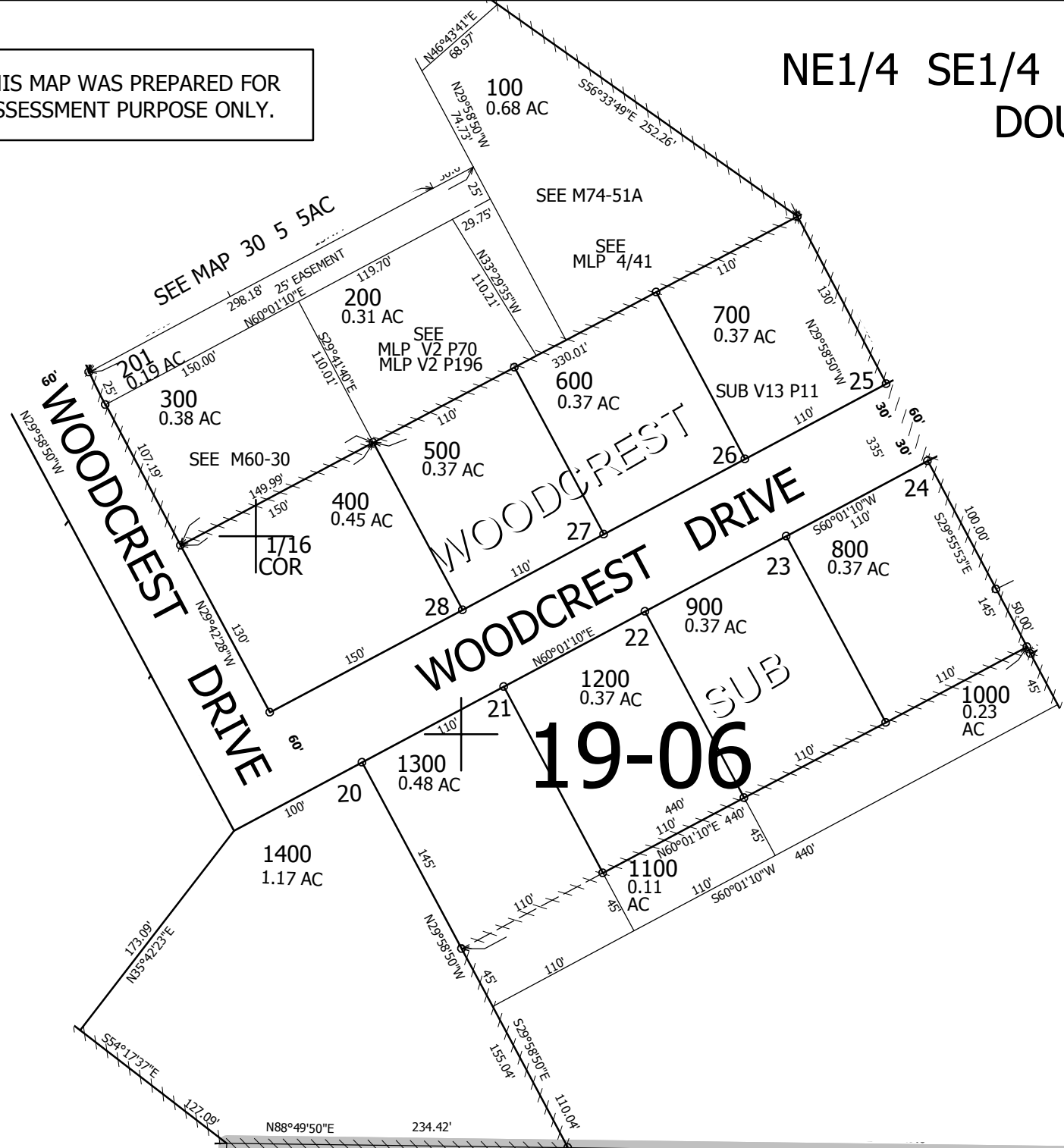


THIS MAP WAS PREPARED FOR ASSESSMENT PURPOSE ONLY.

NE1/4 SE1/4 SEC.5 T30S. R.5W. W.M. DOUGLAS COUNTY  
1" = 100'

REVISED ON 6-12-13

30 5 5DA

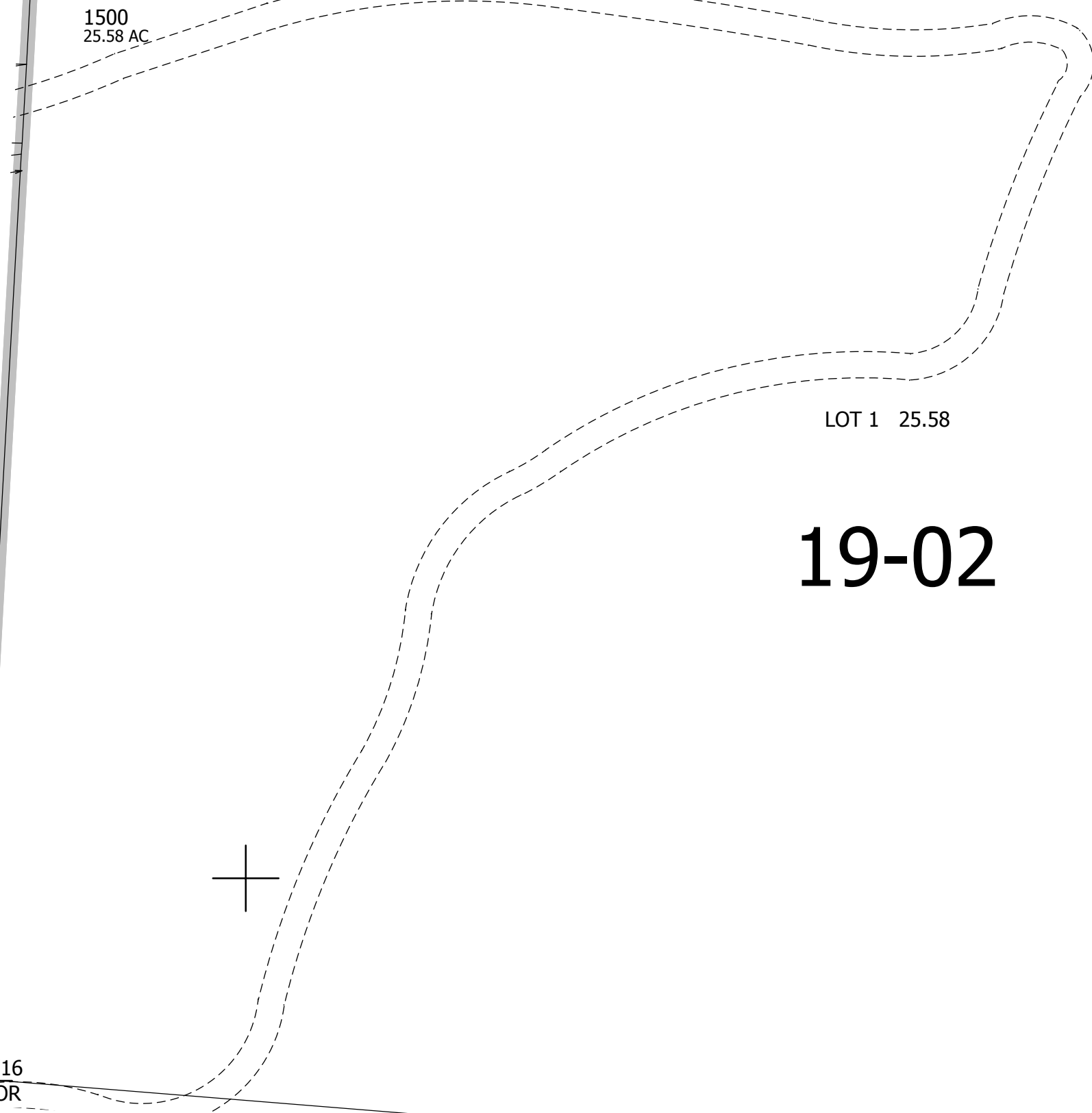


CANCELLED NO'S



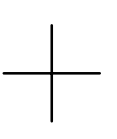
SEE MAP 30 5 5AD

SEE MAP 30 5 5DB



SEE MAP 30 5 4

SEE MAP 30 5 5



494,000

4,171,000

1/16 COR

30 5 5DA