

THIS MAP WAS PREPARED FOR ASSESSMENT PURPOSE ONLY.

SE1/4 NW1/4 SEC.5 T30S. R.5W. W.M. DOUGLAS COUNTY

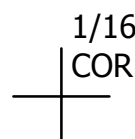
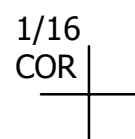
30 5 5BD

1" = 100'

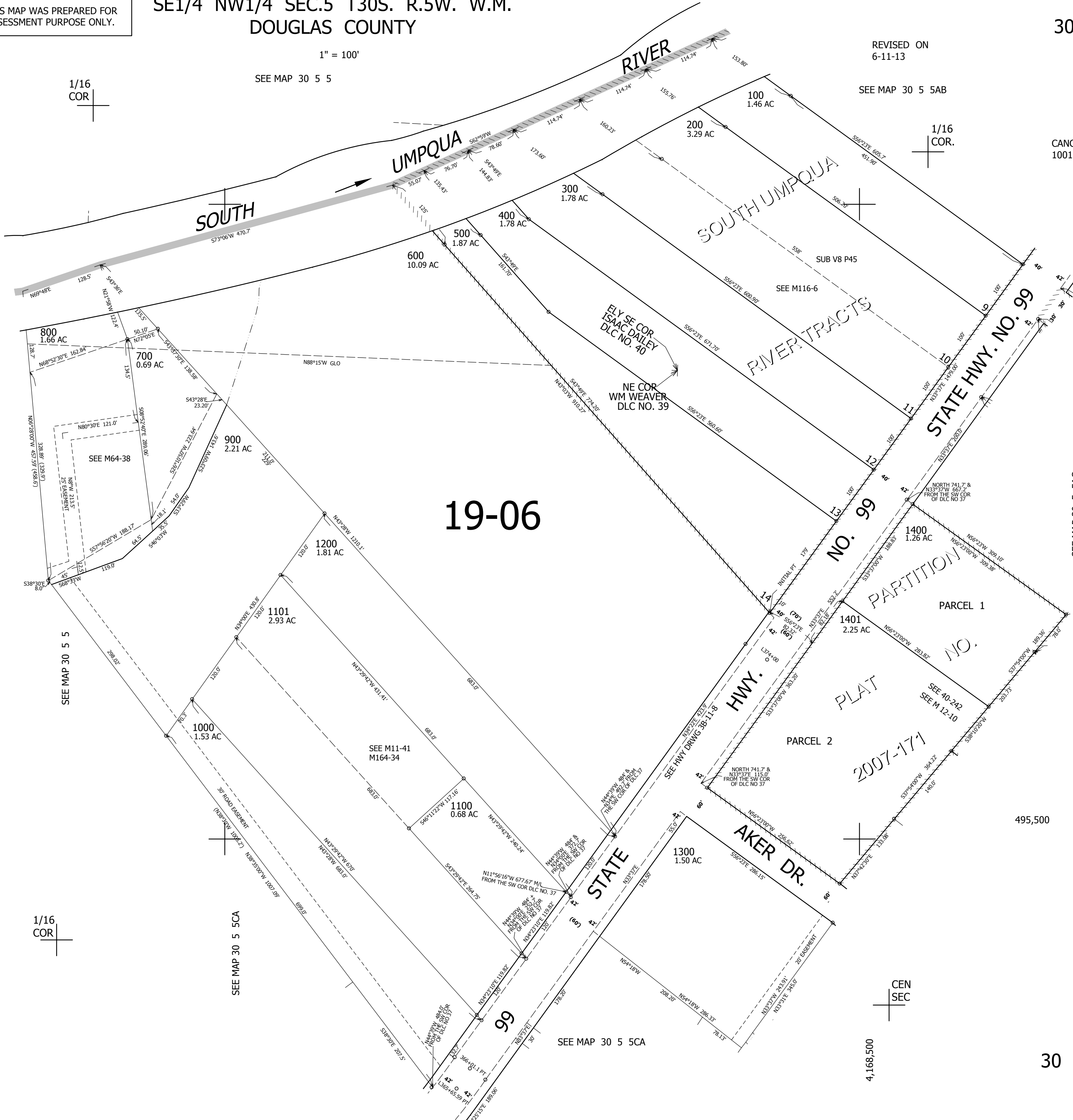
REVISED ON 6-11-13

SEE MAP 30 5 5

SEE MAP 30 5 5AB



CANCELLED NO'S 1001



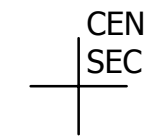
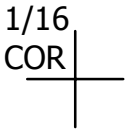
19-06

SEE MAP 30 5 5

SEE MAP 30 5 5CA

SEE MAP 30 5 5CA

SEE MAP 30 5 5AC



4,168,500

30 5 5BD