

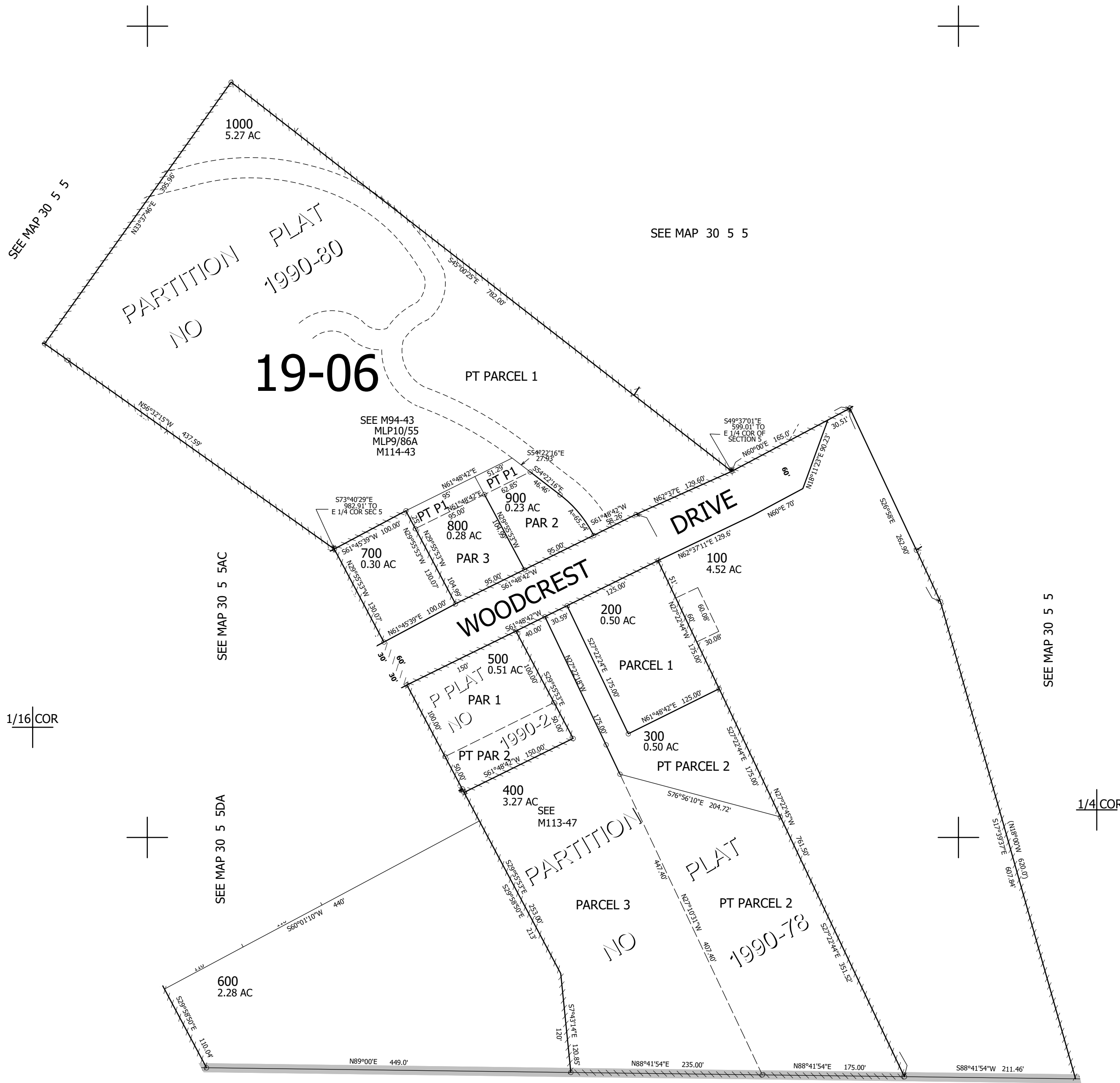
THIS MAP WAS PREPARED FOR ASSESSMENT PURPOSE ONLY.

SE1/4 NE1/4 SEC.5 T30S. R.5W. W.M.  
DOUGLAS COUNTY  
1" = 100'

REVISED ON  
6-11-13

30 5 5AD

CANCELLED NO'S  
1001 1002 301



4,170,000

SEE MAP 30 5 5DA

495,000

30 5 5AD