

THIS MAP WAS PREPARED FOR ASSESSMENT PURPOSE ONLY.

Upper Left:  
123°19'50"W 43°0'1"N  
4164275E 498866N ft

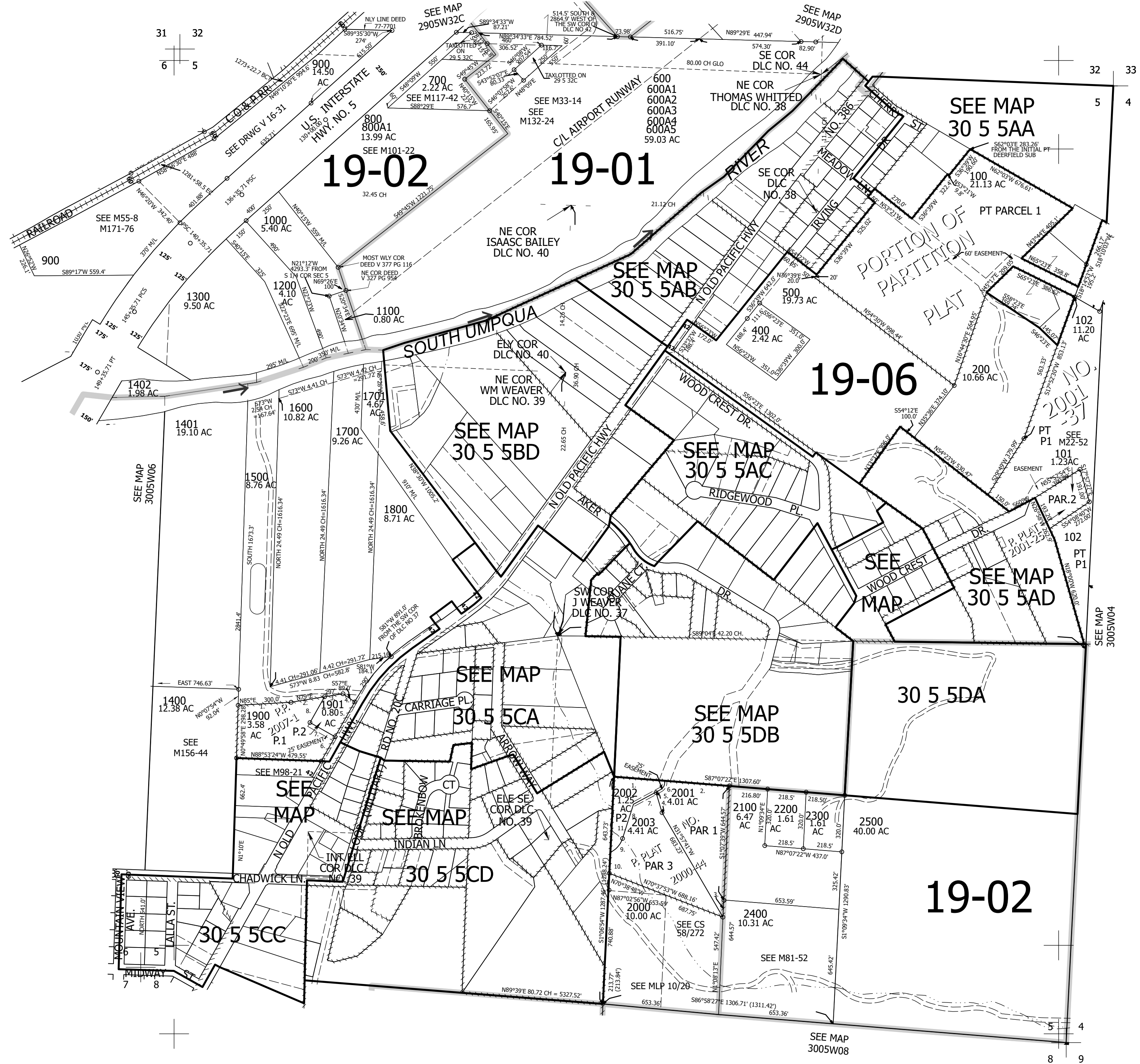
SEC.05 T.30S. R.05W. W.M.  
DOUGLAS COUNTY  
1" = 400'

Date Exported 2026-03-31

300505  
& INDEX  
Myrtle Creek

CANCELLED NOS:  
303 304 305  
306 300 301  
302 1801 701  
1200M1 1300M1 2600  
2600M1 601 702  
103 600A6 1500A1

- PP 2007-1
1. N85°44'40"E 300.00'
  2. N79°43'11"E 191.37'
  3. N79°43'11"E 105.66'
  4. S56°16'07"E 93.05'
  5. S28°31'54"W 226.09'
  6. S28°31'54"W 158.44'
  7. N61°28'06"W 163.00'
  8. N28°31'54"E 167.21'
- PP 2000-44
1. S87°07'22"E 286.06'
  2. S87°07'22"E 368.04'
  3. S1°07'39"W 97.28'
  4. N18°18'52"E 121.02'
  5. N59°59'33"E 28.67'
  6. R=46.45' A=59.81'  
LC=N23°06'17"E 55.77'
  7. S59°59'33"W 144.03'
  8. S16°W 203.31'
  9. R=130' A=107.21'  
LC=S39°37'45"W 104.2'
  10. N1°06'15"E 118.62'
  11. N1°06'15"E 427.8'



300505  
& INDEX  
Myrtle Creek

Lower Right:  
123°18'11"W 42°58'55"N  
4172125E 491911N ft