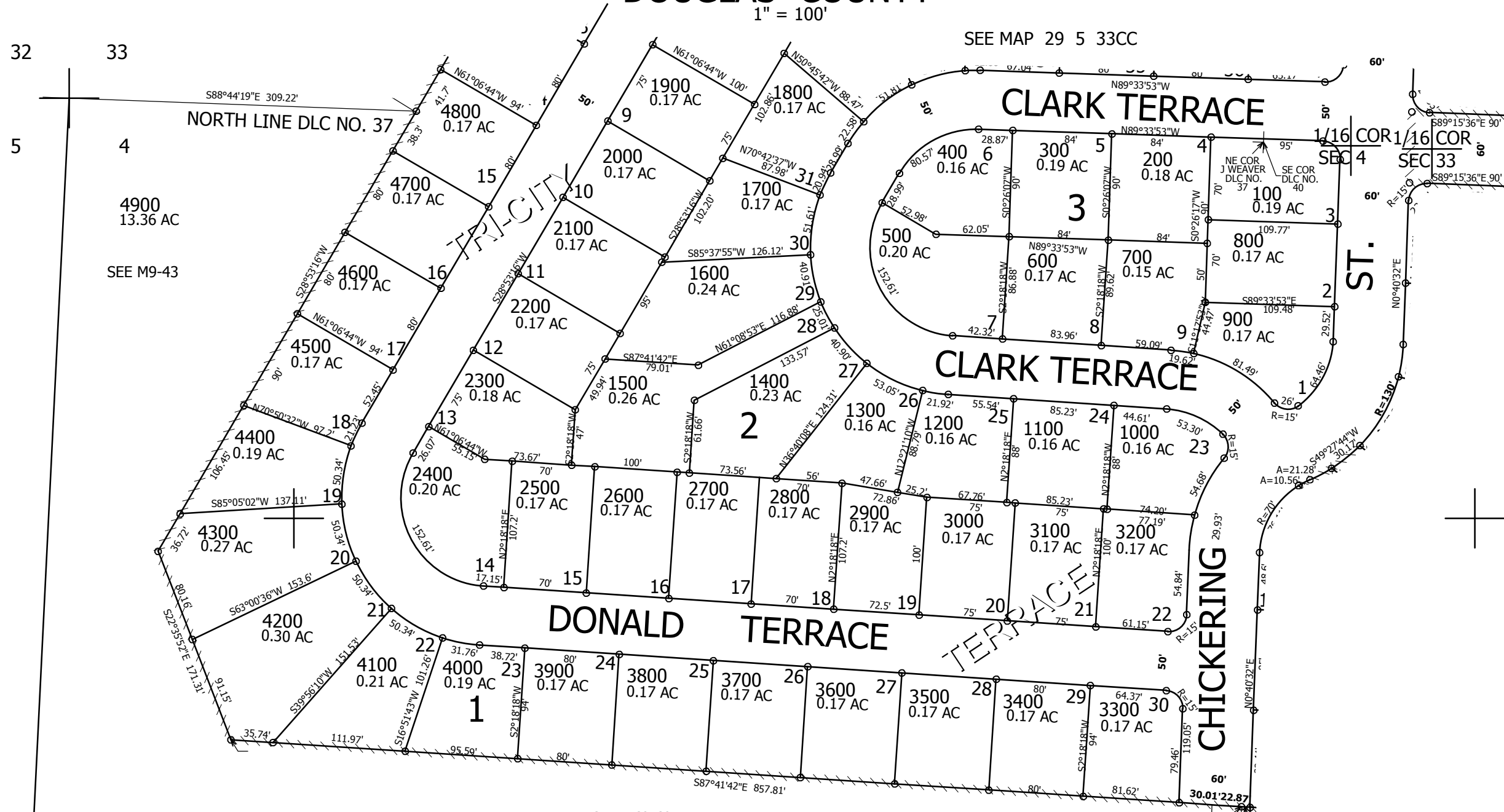


THIS MAP WAS PREPARED FOR ASSESSMENT PURPOSE ONLY.

NW1/4 NW1/4 SEC.4 T30S. R.5W. W.M.
DOUGLAS COUNTY
1" = 100'

REVISED ON
4-6-09

30 5 4BB



19-06

SEE MAP 30 5 5AA

SEE M62-60

SEE MAP 30 5 4

SEE
M148-27

SEE MAP 30 5 4BA

CANCELLED NO'S

1/16 COR

1/16 COR

496,500

4,172,500

30 5 4BB