

THIS MAP WAS PREPARED FOR ASSESSMENT PURPOSE ONLY.

Upper Left:
123°18'5"W 42°59'59"N
4172017E 498314N ft

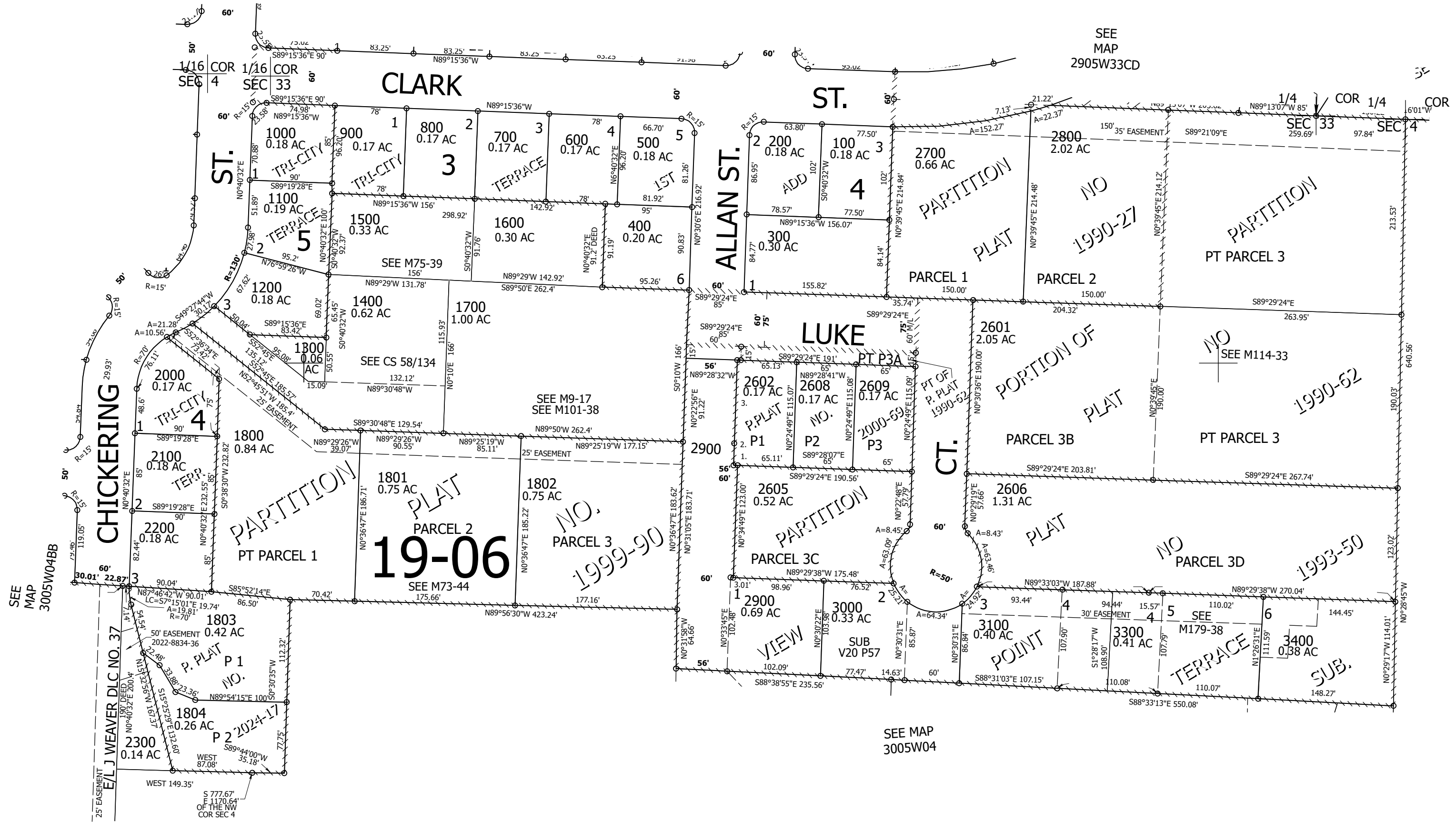
NE1/4 NW1/4 SEC.04 T.30S. R.05W. W.M.
DOUGLAS COUNTY
1" = 100'

Date Exported 2024-07-31

300504BA
Myrtle Creek

PP 2000-69
1. N89°28'07"W 4.36'
2. N0°31'20"E 23.92'
3. N0°22'25"E 91.13'

CANCELLED NOS:
2400 2603 2500
2604 1900 2607
2610 2600 3201
3200



300504BA
Myrtle Creek

Lower Right:
123°17'38"W 42°59'42"N
4173992E 496575N ft