

THIS MAP WAS PREPARED FOR ASSESSMENT PURPOSE ONLY.

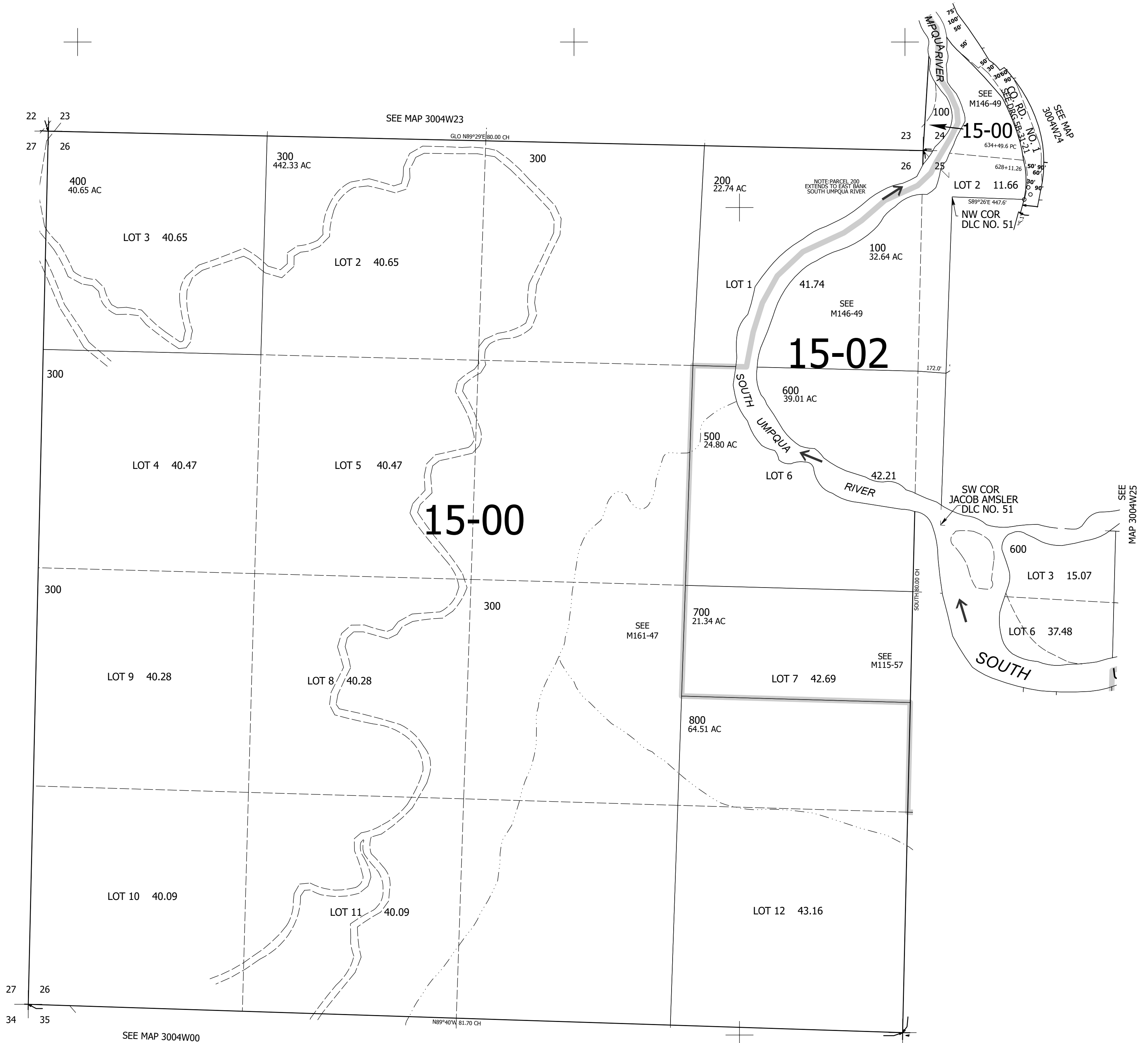
Upper Left:
123°9'11"W 42°56'37"N
4211063E 476582N ft

SEC.26 T.30S. R.04W. W.M.
DOUGLAS COUNTY
1" = 400'

Date Exported 2025-12-30

300426

CANCELLED NOS:
200M1 200M2 500M1



300426

Lower Right:
123°7'22"W 42°55'30"N
4218913E 469627N ft