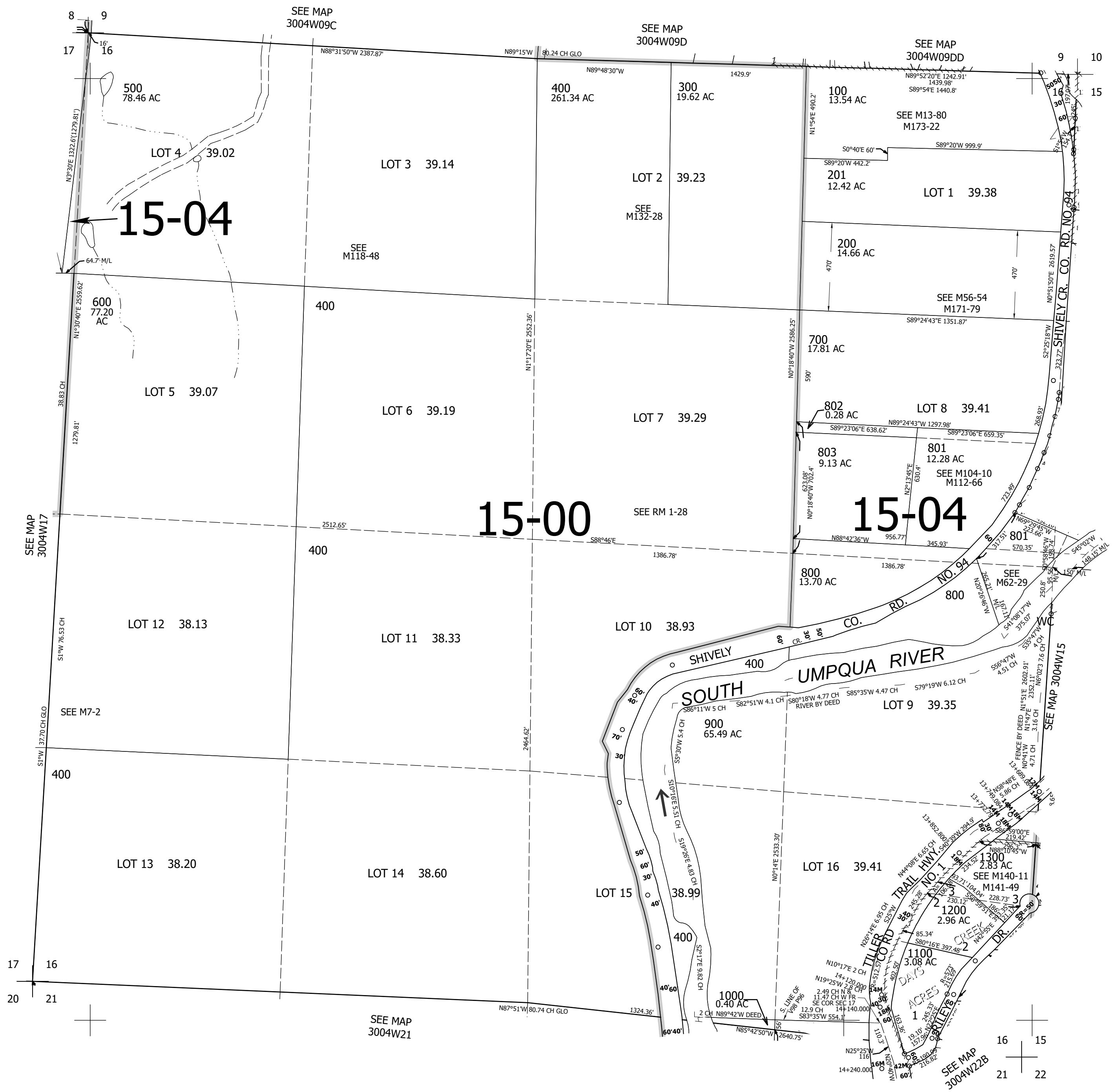


THIS MAP WAS PREPARED FOR ASSESSMENT PURPOSE ONLY.

Upper Left:
123°11'36"W 42°58'16"N
4200618E 486975N ft

SEC.16 T.30S. R.04W. W.M.
DOUGLAS COUNTY
1" = 400'

CANCELLED NOS:
804 805 806
807 1201 1301



Lower Right:
123°9'47"W 42°57'10"N
4208467E 480019N ft