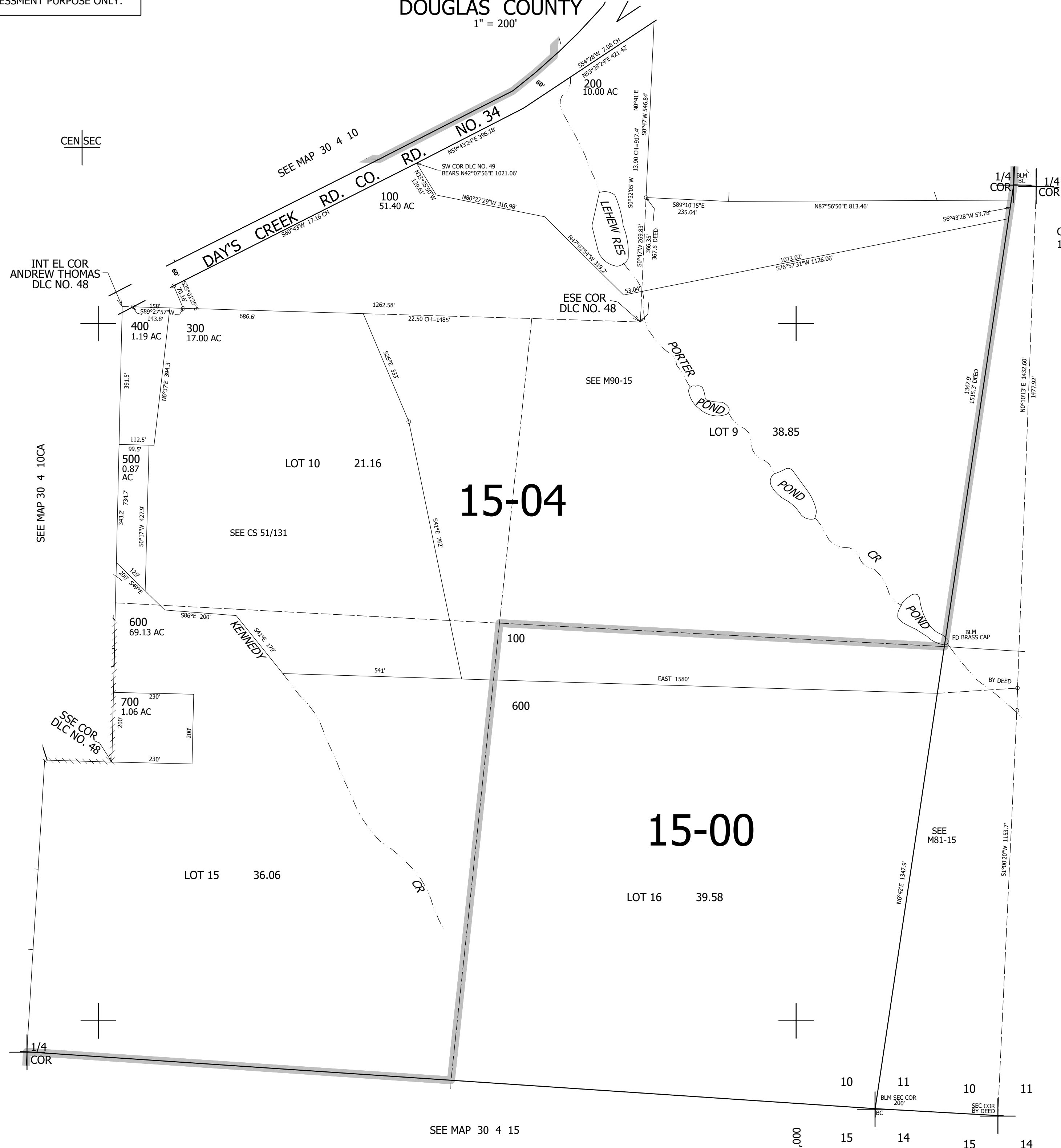


THIS MAP WAS PREPARED FOR ASSESSMENT PURPOSE ONLY.

SE1/4 SEC.10 T30S. R.4W. W.M. DOUGLAS COUNTY
1" = 200'

REVISED ON 1-5-22

30 4 10D



CANCELLED NO'S 101 201

SEE MAP 30 4 11

486,000

30 4 10D