

THIS MAP WAS PREPARED FOR ASSESSMENT PURPOSE ONLY.

SE1/4 SW1/4 SEC.10 T30S. R.4W. W.M.
DOUGLAS COUNTY
1" = 100'

REVISED ON
1-5-22

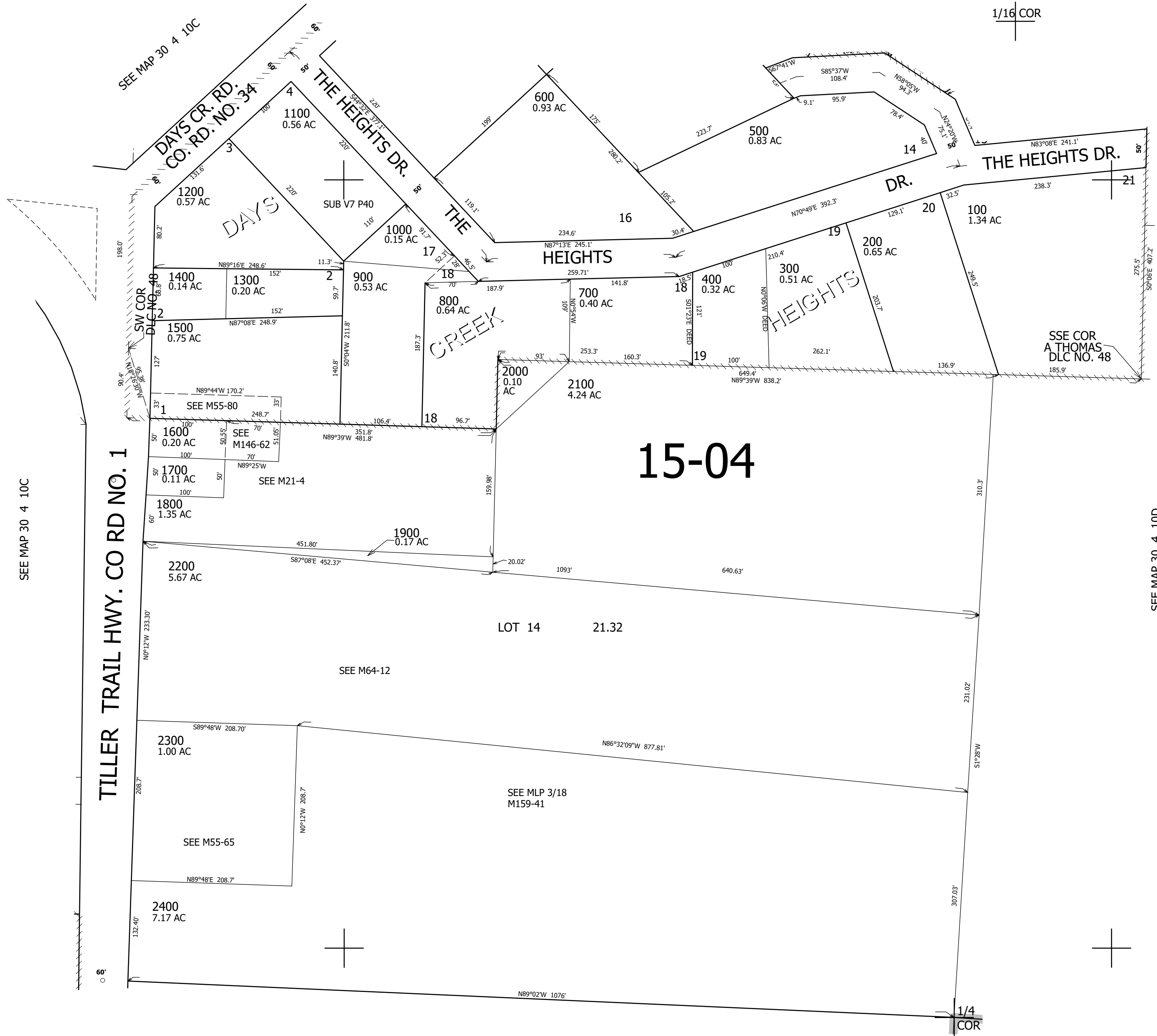
30 4 10CD

1/16 COR

SEE MAP 30 4 10CA

1/16 COR

CANCELLED NO'S



SEE MAP 30 4 10C

SEE MAP 30 4 10D

1/16 COR

1/4 COR

SEE MAP 30 4 15

486,000